

**Migration as an Adjustment Mechanism in the Crisis?
A Comparison of Europe and the United States**

by

Julia Jauer, Thomas Liebig, John P. Martin
and Patrick Puhani

University of Lüneburg
Working Paper Series in Economics

No. 331

October 2014

www.leuphana.de/institute/ivwl/publikationen/working-papers.html

ISSN 1860 - 5508

Migration as an Adjustment Mechanism in the Crisis? A Comparison of Europe and the United States¹

Julia Jauer², Thomas Liebig³, John P. Martin⁴, Patrick Puhani⁵

Author's address:

Patrick A. Puhani
Leibniz-Universität Hannover
Institut für Arbeitsökonomik
Königsworther Platz 1
D-30167 Hannover
Phone +49 511 762 5620
Email puhani@aoek.uni-hannover.de

¹ This paper has benefited from the support of the European Commission (Directorate General for Employment, Social Affairs and Inclusion) in the framework of the joint EC-OECD project on “Matching economic migration with labour market needs”. The authors would like to thank Laurent Aujean, Jean-Christophe Dumont, Knut Gerlach, Alexander Hijzen, Stefano Scarpetta and the participants of the 3rd annual conference on “Immigration in OECD Countries” (Paris, 6 December 2013) for helpful comments.

² OECD, Paris.

³ OECD, Paris.

⁴ OECD, Paris.

⁵ Leibniz University of Hannover; CReAM/University College London; IZA/Bonn; SEW/University of St. Gallen.

Abstract

The question of whether migration can be an equilibrating force in the labour market is an important criterion for an optimal currency area. It is of particular interest currently in the context of high and rising levels of labour market disparities, in particular within the Eurozone where there is no exchange-rate mechanism available to play this role. We shed some new light on this question by comparing pre- and post-crisis migration movements at the regional level in both Europe and the United States, and their association with asymmetric labour market shocks. We find that recent migration flows have reacted quite significantly to the EU enlargements in 2004 and 2007 and to changes in labour market conditions, particularly in Europe. Indeed, in contrast to the pre-crisis situation and the findings of previous empirical studies, there is tentative evidence that the migration response to the crisis has been considerable in Europe, in contrast to the United States where the crisis and subsequent sluggish recovery were not accompanied by greater interregional labour mobility in reaction to labour market shocks. Our estimates suggest that, if all measured population changes in Europe were due to migration for employment purposes – i.e. an upper-bound estimate – up to about a quarter of the asymmetric labour market shock would be absorbed by migration within a year. However, in the Eurozone the reaction mainly stems from migration of third-country nationals. Even within the group of Eurozone nationals, a significant part of the free mobility stems from immigrants from third countries who have taken on the nationality of their Eurozone host country.

Keywords

Free mobility, migration, economic crisis, labour market adjustment, Eurozone, Europe, United States.

JEL Classification

F15, F16, F22, J61.

INTRODUCTION

With the large and growing unemployment disparities in Europe in the wake of the global economic crisis, the question of whether or not free labour mobility can be an equilibrating force on the labour market is a highly topical one. In the EU-27, harmonised unemployment rates have risen between 2007 and early 2013 from 7.2% to 10.9%. However, not all countries were equally affected. Whereas the unemployment rate rose in Greece and Spain by 18 percentage points over the same period, it actually declined in Germany, by more than 2 percentage points.

At the same time, there is a significant amount of free mobility in Europe whose scale has risen sharply following the EU enlargements in 2004 and 2007. According to the OECD standardised migration statistics, which cover only *permanent* migration movements across borders within OECD Europe, in 2011 intra-European free circulation was four times more common than migration from outside of the free mobility zone, exceeding more than 900 000 migrants (OECD, 2013). OECD data also show that migration of the free-mobility type is the component in international migration flows that has reacted most strongly to the crisis.

In the United States, the labour market impact of the crisis across states has also been far from even, although the variation has been less marked than in Europe. Whereas the unemployment rate rose by roughly the same amount as in the EU-27 (from 4.6 to 7.8% between 2007 and early 2013), Nevada saw an increase of more than 6 percentage points over that period, while North Dakota recorded no change.

This paper looks at the response of migration to differing labour market conditions, by analysing pre- and post-crisis migration movements in both Europe and the United States and how they have been linked to asymmetric economic shocks. We analyse both *internal* migration movements, that is of nationals of the free-mobility zone, and *all* migration flows. The issue of the responsiveness of migration to asymmetric shocks is particularly important for Europe, in the light of the recent shocks which have shaken the foundations of the Eurozone, a common currency area in which the exchange rate is no longer available as an instrument for adjusting to asymmetric shocks across countries within the region. At the same time, the European Union expanded its membership in 2004 and 2007 (as well as 2013, which is out of our sample period), increasing the scope for intra-EU mobility to play an equilibrating role in the face of adverse shocks¹.

¹ See Kahanec (2012) for an extensive discussion of the effects of these two enlargements on labour mobility in Europe.

The remainder of this paper is structured as follows. Section 1 contains a brief review of the literature on free mobility as an adjustment mechanism. Section 2 presents the data used for the analysis. Section 3 provides some descriptive information on recent trends in regional labour market disparities and population changes in both Europe and the United States. Section 4 provides an overview of the socio-economic characteristics of migrants within the respective free-mobility zones. Section 5 presents the empirical approach. Section 6 analyses the links between labour market disparities and migration responses. Section 7 concludes.

1. PRIOR EMPIRICAL LITERATURE ON THE LINKS BETWEEN MIGRATION AND ECONOMIC CONDITIONS

The issue of labour mobility as an adjustment mechanism in the face of economic shocks has received considerable attention in the literature, both in the United States and in Europe. More than 50 years ago, in his seminal paper on optimum currency areas, Mundell (1961) stressed the need for high labour and capital mobility as a shock absorber within a currency union: indeed, he argued that a high degree of factor mobility, especially labour mobility, is the defining characteristic of an optimum currency area. Thus, a key question when considering whether the Eurozone is an optimal currency area is: how important is labour mobility as an adjustment mechanism in Europe compared with its role in the United States? This is an empirical issue which has been examined in the literature.

Decressin and Fatás (1995), use a methodology developed by Blanchard et al. (1992) to find that employment shocks lead to a smaller migratory reaction in Europe than in the United States during the period 1968 to 1987. For the period 1981 to 1994, Bentivogli and Pagano (1999) obtain similar results. Von Weizsäcker (2008) agrees that *internal* mobility within the euro area is relatively low compared with mobility within the United States, but he argues that *external* immigration, i.e., from new EU member states and non-EU countries, can be a powerful substitute and thereby help assure the labour market adjustment process within the euro area, a judgement that is consistent with Puhani's (2001) findings for Italy. A high turnover in the labour market may be helpful for potential migrants to find jobs, enabling "outsiders" to compete more successfully for job vacancies with "insiders", as shown in a recent study of OECD countries by Martin and Scarpetta (2012). Christodoulakis and Mamatzakis (2010) and Jimeno and Bentolila (1998) argue that labour market rigidities lead to low employment rates and persistent regional labour market disparities in Greece and Spain, respectively.

The accession of central and eastern European countries to the European Union in 2004 (by the Baltics, the Czech Republic, Hungary, Poland, the Slovak Republic and Slovenia)² and 2007 (Bulgaria and Romania) has led to a set of studies investigating regional convergence in the accession countries and migratory responses to regional inequalities. Huber (2007) surveyed this literature, which in sum did not find regional convergence in these countries prior to accession. Instead, proximity to an intra-EU border and capital-city status seem to have fostered economic development. Fidrmuc (2004) even found that, despite growing regional disparities in the accession countries, measured by the coefficient of variation in wages and unemployment, overall migration flows have decreased. At least prior to their accession to the EU, migration contributed little to convergence between regions in EU accession countries, a fact that Huber (2007) sees as rooted in liquidity constraints and in imperfections in the housing market. Caroleo and Pastore (2010) also point to a poorly functioning rental market as a constraint for interregional migration flows within Europe. Heinz and Ward-Warmedinger (2006) stress that, apart from evident language barriers, there are still administrative barriers to free mobility, such as a less-than-full transferability of qualifications and labour market experience, which limit cross-country migration within the EU.

An example of regional developments within a recently created monetary union is the re-unification of West and East Germany in 1990. Monetary, economic and “social” union of the two parts of Germany led to a large real wage increase for East German workers which was not matched by a productivity convergence. As a result, unemployment rates remain high in the Eastern *Länder* compared with the Western *Länder*, more than 20 years after German re-unification. Although the circumstances associated with German monetary union of 1990 differ from those of the European monetary union about ten years later (1999), it is nevertheless interesting to compare those two cases. Unlike the Eurozone, the German “union” comprised not only monetary, but also fiscal and social policy union. This included large fiscal transfers from the Western to the Eastern *Länder*, a phenomenon that has not occurred in the Eurozone (Snower and Merkl, 2006). Nevertheless, there is evidence that despite this complete union and continuing interregional migration from the Eastern to the Western *Länder*, the two parts of Germany have not converged in many respects. Uhlig (2006; 2008) documents this situation and explains it by a model in which so-called “networking externalities” keep jobs in the Western *Länder* and prevent capital and jobs following the significant fiscal transfers to the Eastern *Länder*. In a similar vein, Overman et al. (2002)

² Two further countries also joined the EU in 2004. However, due to their small sizes and extremely limited migration potential, there was no concern about the potential labour market impact on other EU member countries. As a result, full freedom of movement was granted to their nationals by the other countries of the free-mobility zone directly upon accession – in contrast to the other countries, where *transition* arrangements applied in many countries. For an overview and a discussion, see OECD (2012).

show evidence for polarization of unemployment rates in Western Europe and demonstrate that regional clusters need not respect national boundaries.

All of the above studies refer to the pre-crisis period. Regarding more recent trends, Molloy et al. (2011) review migration patterns within the United States over the past thirty years and find evidence for a secular decline in internal migration. Kaplan and Schulhofer-Wohl (2012) argue that this decline can largely be explained by easier learning about distant places before making a migration decision and by more homogeneity in returns to skills across regions. Molloy et al. (2011) also compare the experience of the United States with European data on within-country, inter-NUTS-2 mobility (see below), where the descriptive data show an upward trend in the second half of the 2000s, albeit the so-measured internal mobility still tends to be below that observed in the United States.³ A few recent studies have looked specifically at the impact of the crisis on mobility in Europe, with a particular focus on Germany which is not only the largest country in the Eurozone but also the country where labour market conditions have developed the most favourably since the beginning of the crisis. Elsner and Zimmermann (2013), on the basis of a descriptive overview of migration flows to Germany and economic conditions, conclude that while there has been an increase in immigration from countries hardest hit by the crisis, the flows in question are too small to have a large impact on reducing unemployment in origin countries. A similar conclusion has been reached by Bräuning and Majowski (2011) who modeled the links between migration to Germany and wage and unemployment differentials with Greece, Ireland, Portugal and Spain. Bertoli et al. (2013) analysed the effect of the economic crisis on net migration of EU-27/EFTA nationals to Germany and argued that although differences in the economic conditions between the origin countries and Germany play a role in the observed increase in net migration to Germany between 2006 and 2012, changes in the relative attractiveness of alternative destinations are more important. Beine et al. (2013) analyse the reaction of gross bilateral migration flows between 30 OECD countries from 1980 and 2010 to differences in business cycles and employment rates between origin and destination countries. They find that labour mobility in Europe has increased over the period considered and has become more reactive to asymmetric shocks. Using the methodology developed by Blanchard et al. (1992), Dao et al. (2013) compare inter-state migration in the United States and mobility between 173 European regions in 21 countries and the response to regional labour demand shocks from 1998 to 2009. They find that the migration response to such shocks has increased in Europe over that period while it declined in the United States. They also find that the migration response has on average been larger in the countries which joined the EU in 2004 than in the EU-15 countries.

³ Note, however, that the data for Europe reported by Molloy et al (2011) cover the period until 2007, i.e. they cover only the pre-crisis period.

In this paper, we will estimate the relationship between migration (proxied by population changes) and lagged regional unemployment and non-employment differentials. For reasons of data availability, we restrict ourselves to *net* migration, as we are not able to observe gross inflows and outflows separately (Coen-Pirani, 2010). Following *Treyz et al. (1993)*, we only consider a one year lag and do not take into account the expectations of potential migrants' *future* labour earnings (Gallin, 2004; Kennan and Walker, 2011).

2. DATA AND REGIONAL CLASSIFICATION

The datasets used in this paper cover the EU-27/EFTA, the Eurozone, and the United States at two different levels of regional aggregation for the years 2005 to 2011. This period was chosen to cover both the crisis and the initial recovery period and the years preceding it; in addition, data at the more disaggregated regional level are only available consistently for both areas since 2005. The European free-mobility zone is defined as the EU-27 plus the countries of the European Free Trade Association (EFTA) for the entire period. Note that in terms of labour mobility, the EFTA countries form part of the same labour market as the EU-27. We include all of these countries in the free-mobility zone for the entire period in spite of the fact that not all the countries in question formed part of the free-mobility zone throughout that period – in particular, Bulgaria and Romania joined the EU only in 2007 – and that a number of transitional measures applied. Indeed, migration flow data from a number of countries suggest that there was already significant migration from the new member countries prior to their accession to the European Union; a similar argument can be made for Switzerland regarding the gradual introduction of free mobility with the EU-15 (see OECD, 2012, for a discussion). In addition, immediately upon accession, all EU-27/EFTA countries had to introduce facilitations for nationals from the new EU member countries. For the purposes of this paper, the Eurozone is defined as the 17 member countries of the Euro currency union as of 2011, and comprises thus a subset of the EU-27/EFTA countries.

The period 2005-2012, to which we limit our analysis, followed the introduction of the euro as a common currency in 1999 and the EU enlargement in 2004 with the adhesion of ten new member countries to the EU and the gradual integration of Switzerland into the free-mobility zone. It has also been marked by the global economic crisis which started in 2008, and which had profound effects on both the labour markets of the EU-27/EFTA and the United States. The labour force survey data used for the analyses have been aggregated on a regional level for the entire EU-27/EFTA zone (including a subset for the Eurozone) and the USA. The sample has been restricted to the working-age population (i.e., persons aged 15-64).

Data for the EU-27/EFTA and the Eurozone are taken from the European Labour Force Survey (LFS). In 2012, around 7.2 million interviews were conducted and the sampling rates in the participating countries vary between 0.2 and 3.3 per cent. The regional classification used for the EU-27/EFTA and Eurozone countries is the Nomenclature of Statistical Territorial Units (NUTS). The survey data used for the estimations are aggregated on both the basic regional (NUTS-2) and major regional (NUTS-1) levels. The number of observed NUTS-2 regions in the EU-27/EFTA and Eurozone estimations is 265 and 167, respectively, with an average of about 1.2 million working-age inhabitants per region for each of the two areas under consideration. For the estimations on the NUTS-1 level, 96 regions for the EU-27/EFTA and 62 for the Eurozone are included, each with an average of about 3.4 million inhabitants. As a proxy for regional income per capita, GDP per capita has been taken from the Eurostat REGIO database.

Data for the United States have been derived from the American Community Survey (ACS). In 2012, around 2.4 million interviews were conducted and the sampling rate is around 1 per cent. Compared with other large-scale US surveys, such as the Current Population Survey (CPS), the ACS has the advantage that it includes detailed geographic information below the state level on so-called Public Use Microdata Areas (PUMAs) since 2005. Note, however, that due to different methodologies, the ACS-measured unemployment is higher than that observed with data from the CPS.

Compared with Metropolitan areas, the PUMA regional classification has the advantage that it covers the whole territory (see also Molloy et al. 2011). PUMA regions are the smallest geographic entity available in the ACS and have an average of 100 000 working-age inhabitants. The PUMAs are aggregated into larger units, the SuperPUMAs, of which there are 532 with an average of 382 000 inhabitants in working age. This means that the NUTS-2 regions have a population that is about three times larger on average which tends to reduce the expected percentage of population changes relative to the United States.⁴ The equivalent to the NUTS-1 level is the state level in the United States, with an average working-age population of almost 4 million, which is very similar in the size to Europe's NUTS-1 regions. In contrast to the EU-27/EFTA, where GDP per capita has been used in the empirical analysis below as a proxy for regional income, a direct measure of income per capita at the regional level is available for the United States.⁵

The unemployment rates are defined as the number of unemployed divided by the labour force (employed plus unemployed) of working age (15-64 years old), using the standard ILO definition for

⁴ Note, however, that the population density in the EU-27 area is also more than three times as high as the population density in the United States.

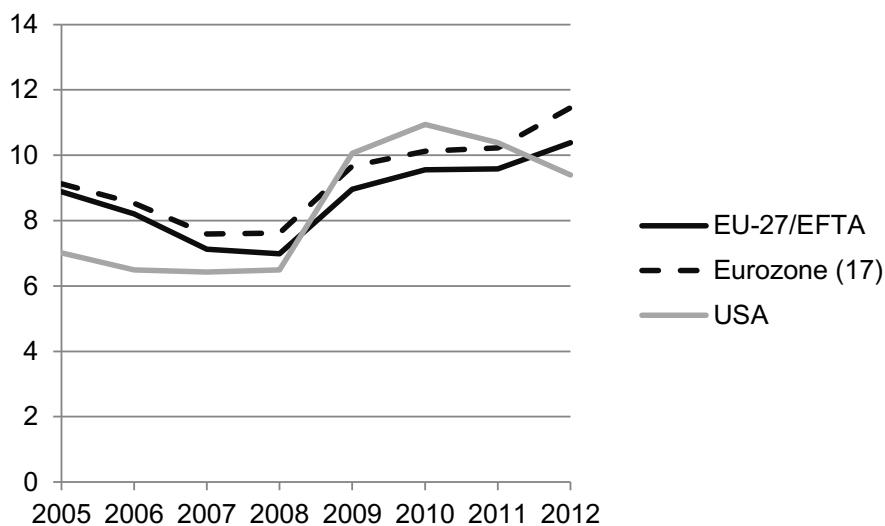
⁵ The income per capita data are available at the PUMA level. Population weights have been used to adjust the data to the SuperPUMA level.

unemployment.⁶ The non-employment rates are defined as the share of those not employed among the total working-age population. Population changes are measured by dividing the size of the population with the size of the population in the respective region one year earlier. Both the ACS and the LFS allow distinguishing between nationals and non-nationals in the regional population. For both data sets, weights are applied.

3. REGIONAL DISPARITIES AND POPULATION CHANGES IN EUROPE AND THE UNITED STATES – AN OVERVIEW

Figure 1 shows how unemployment has evolved in the EU-27/EFTA, the Eurozone and the United States since 2005. As can be seen, both Europe and the United States experienced a strong increase in unemployment rates with the crisis, i.e. between 2008 and 2010. While unemployment has fallen slightly in the United States since then, it has continued to grow – albeit at a slower pace – in the Eurozone. A further observation is that unemployment had declined quite significantly in Europe in the years just prior to the crisis, whereas the decline was only marginal in the United States.

Figure 1: Unemployment rates in the Eurozone, EU-27/EFTA and the United States, 2005-2011

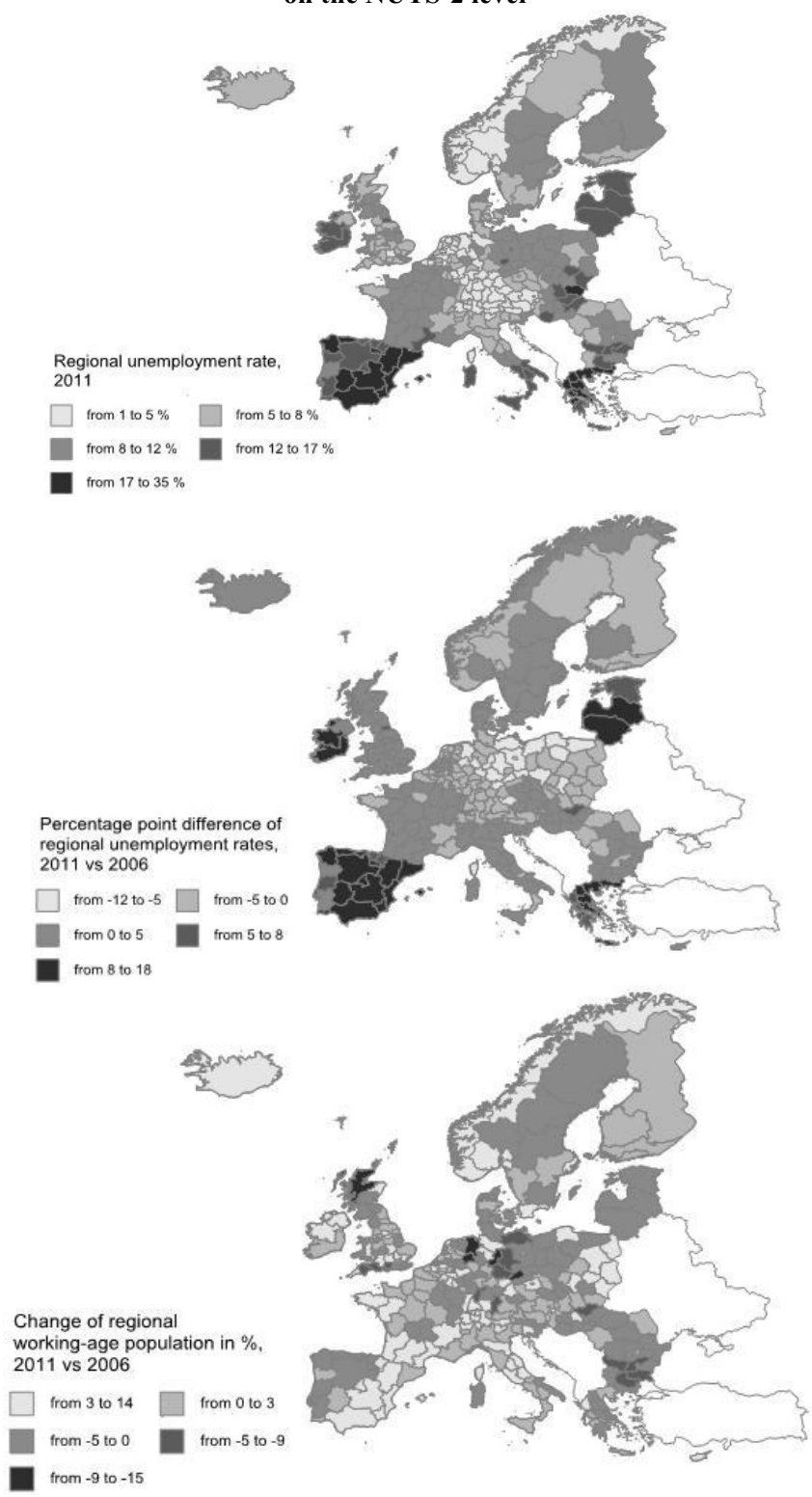


Source: European Labour Force Survey, American Community Survey.

⁶ According to the ILO definition, the unemployed comprise all persons who, during the week prior to the interview, were without work while both being available for work and seeking work.

Figures 2a and 2b depict regional unemployment rates in 2011, the evolution of the regional unemployment rates between 2006 and 2011 and the population change over that period in Europe and the United States at the NUTS-2 and SuperPUMA levels, respectively. In terms of unemployment, one observes a larger disparity in Europe than in the United States, both regarding 2011 levels of unemployment and the evolution since 2006, where the differences are particularly striking. In Europe, the impact on regions at the periphery is clearly visible. In contrast, the association between unemployment rates and the evolution of the working-age population is not obvious from these maps in either Europe or the United States.

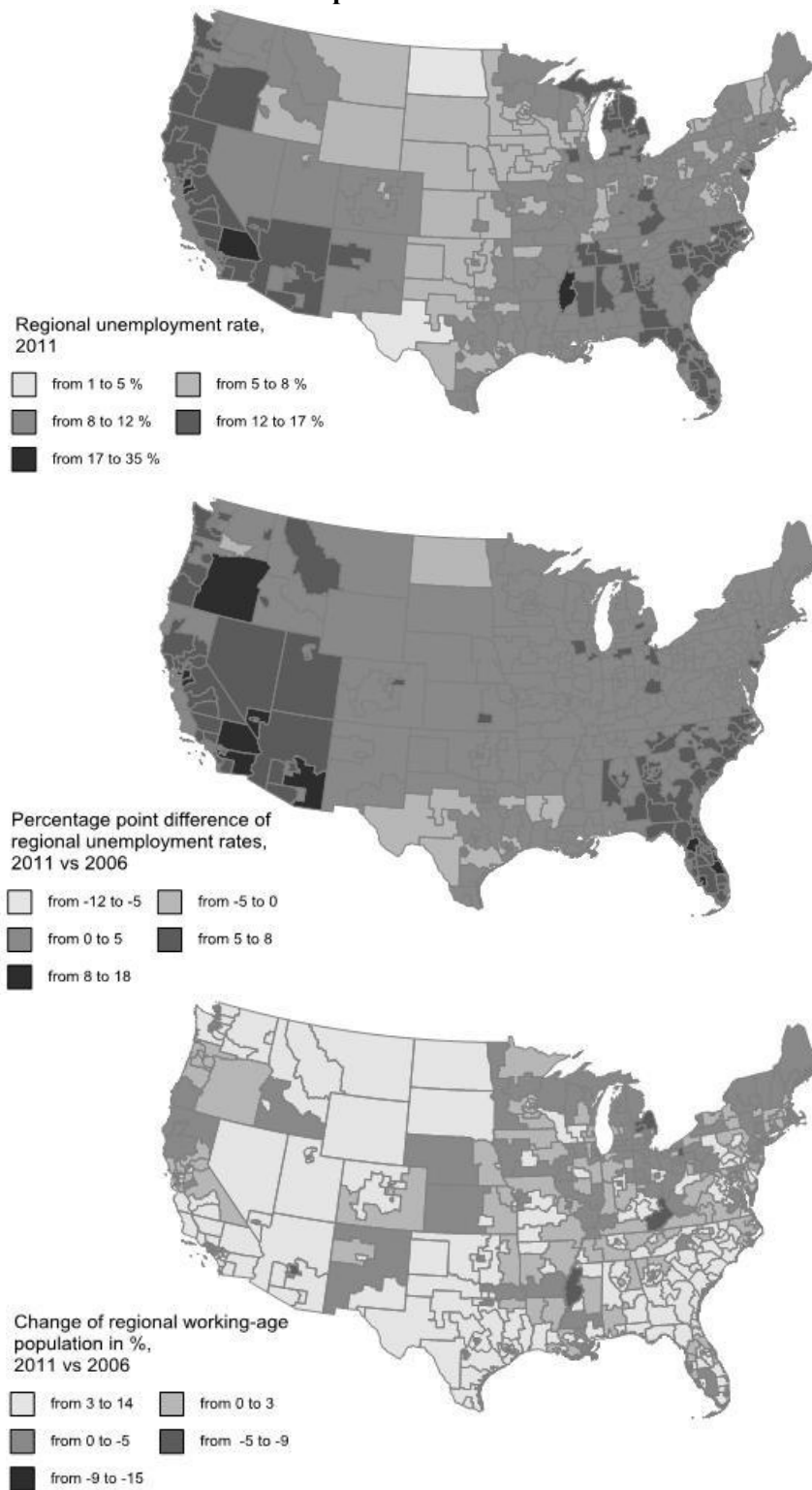
Figure 2a: Regional unemployment rates and population change for the EU-27/EFTA on the NUTS-2 level



Source: European Labour Force Survey and EUROSTAT GISCO © EuroGeographics.

Note: 2006 data for Denmark refer to 2007.

Figure 2b: Regional unemployment rates and population change of for United States on SuperPUMA level

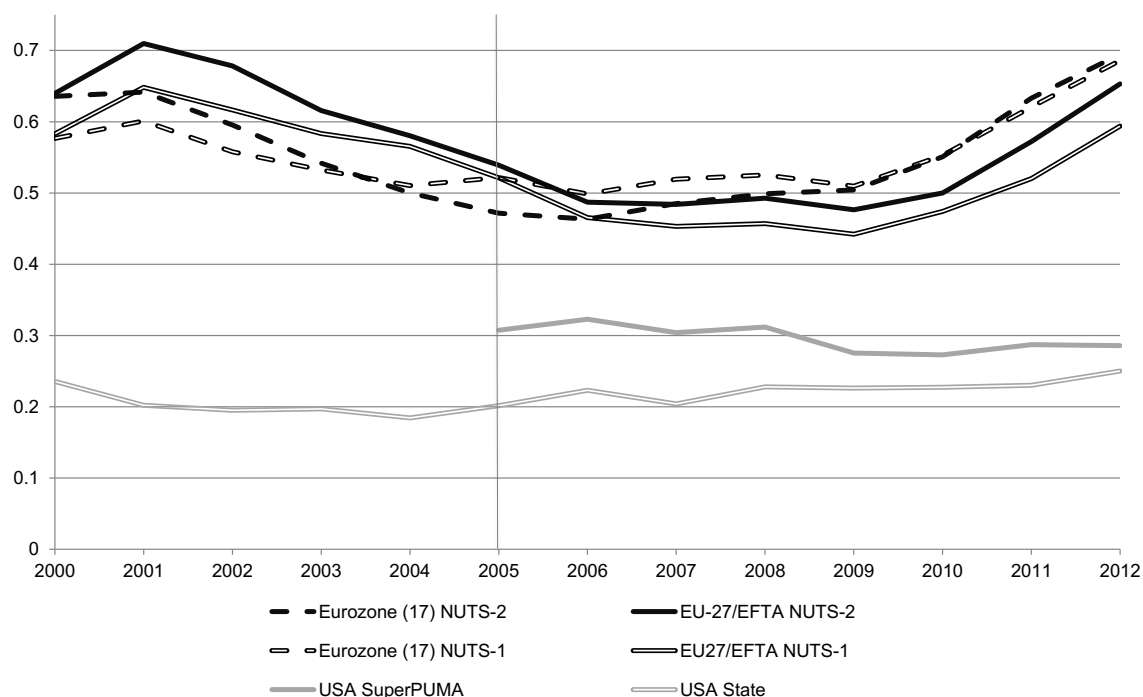


Source: American Community Survey and U.S. Census Bureau © Minnesota Population Center.

At the NUTS-1 level, the lowest regional unemployment rate in Europe in 2011 was observed in the Finnish region of Åland (1%), and the highest in the Spanish region of the Canary Islands (30%). The Canary Islands were also the region which experienced the largest increase in unemployment rates over the five-year period, by more than 18 percentage points, whereas the unemployment rate declined in the five Eastern Länder of Germany by 7 to 9 percentage points. In the United States, the spread of state-level unemployment rates was much smaller, ranging from a low of about 3% in North Dakota to a high of 13% in Michigan in 2011. A similar picture can be observed regarding the evolution of unemployment rates where disparities were also more modest in the United States, ranging from a modest decline of less than 1 percentage point in Alaska to an increase of about 8 percentage points in Nevada.

Interestingly, in terms of population changes, again three of the Eastern German Länder are on top of the list of population declines over that period, with declines of 7-8% of the working-age population in Saxony, Thuringia and Mecklenburg-Vorpommern. In contrast, Luxembourg (which is a country as well as a NUTS-1 and NUTS-2 region) experienced an increase of 13%. Again, the changes in the United States were smaller, ranging from a 3% decline in Michigan to a 9% increase in Utah and an 11% increase in the federal district of Washington. In summary, over the entire period and on the aggregate, both population changes and labour market disparities at the regional level were larger in Europe than in the United States.

Figure 3: Coefficients of variation in regional unemployment in Europe and in the United States



Source: European Labour Force Survey, American Community Survey.

A synthetic measure of the interregional disparity in unemployment rates is given by the coefficient of variation of the unemployment rates, which is two to three times larger in Europe than in the United States (Figure 3). There is also much more cyclical variation in this measure in Europe, where a decline is observed until the beginning of the crisis and a strong increase since 2009, whereas no such changes are observed in the United States. This is particularly visible in the left part of Figure 3, which shows the coefficient of variation for Europe at NUTS-2 level starting in 2000, i.e. the year following the introduction of the common currency in the Eurozone. One also observes a stronger increase in the unemployment variation in the Eurozone compared with the whole EU-27/EFTA since the crisis, at both NUTS-1 and NUTS-2 levels. Hence, whereas regional unemployment variation in the Eurozone was smaller prior to the onset of the crisis, it is now larger than in the EU-27/EFTA region during the financial crisis. Finally, the level of variation is higher at the more disaggregate regional classifications in both Europe and the United States. Before turning to the links between unemployment differentials and migration, Section 4 provides an overview of the socio-economic characteristics of migrants within the respective free-mobility zone.

4. SOCIO-ECONOMIC CHARACTERISTICS OF FREE-MOBILITY MIGRANTS IN EUROPE AND THE UNITED STATES

Migration of nationals within the free-mobility area relative to the total population is considerably larger in the United States than in any other subgroup in the EU-27/EFTA. Free mobility, proxied by the percentage of persons who lived a year ago in a different state, accounted for almost 3% of the total population in the United States in 2005/2006 and has slightly decreased with the crisis (see Table 1). Free movement of citizens from one country to another within the EU-27/EFTA area relative to the total population is only about one tenth of that level. But contrary to the decline in the United States, it has increased somewhat from 2005/2006 to 2011/2012. However, mobility of nationals from the new EU member countries is much larger than that of the EU-27/EFTA as a whole, and also than that of nationals from Southern Europe (see also Annex 3).

The employment rate of recent EU-27/EFTA migrants is slightly higher than that of the non-mobile population, in marked contrast to what is observed in the United States. There are, however, important differences within the group of recent EU-27/EFTA migrants with respect to their labour market position in the destination country. Whereas nationals from Southern Europe who stay within the Eurozone have relatively low employment rates, employment rates are above-average for migrants who are EU-10 nationals.

Interestingly, recent intra-Eurozone migrants were not necessarily the ones who were unemployed in their home country a year before moving. In fact, they faced slightly lower unemployment rates a year before than their peers who did not move. If they stayed within the Eurozone, they also did not see much of an increase in their employment rates either. This is in stark contrast notably to EU-2 migrants, who faced high unemployment rates one year before moving and who improved their employment rates considerably by migrating to another EU-27/EFTA country.

Free-mobility migrants within Europe are on average much younger and more highly-educated than the non-mobile population. This phenomenon is also observed in the United States, but to a lesser degree. Nationals from Southern Europe stand out with respect to their relatively high education level, with the majority having a tertiary-level degree. There is also some disparity within that group. Whereas the share of highly-educated migrants from Greece and Italy among migrants from these countries is in the vicinity of 60% and above, only about a quarter of the migrants from Portugal are highly educated. Associated with the relatively high formal education level is also a relatively high occupation level for those migrants from Southern Europe who managed to find employment.

Table 1: Characteristics of recent free-mobility migrants born in the respective area compared with the native-born population, 15-64 years

	2005/2006						2011/2012								
	EU-27/EFTA Eurozone		Southern Europe in EU-27/EFTA Eurozone		EU-10	EU-2	USA	EU-27/EFTA Eurozone		Southern Europe in EU-27/EFTA Eurozone		EU-10	EU2	USA	
Recent migrants	Employment rate, in %	65	58	61	54	75	66	58	67	60	70	59	71	58	52
	Unemployment rate, in %	12	14	16	21	8	12	14	10	16	12	15	8	17	18
	Non-employment rate, in %	35	42	39	46	25	34	42	33	40	30	41	29	42	48
	Employment rate one year ago, in %	56	48	52	46	65	56	82	59	58	58	51	61	49	76
	Unemployment rate one year ago, in %	17	18	16	21	10	14	9	13	9	15	15	13	26	12
	Non-employment rate one year ago, in %	44	52	48	54	35	44	18	41	42	42	49	39	51	24
	Share of female, in %	51	50	46	50	50	60	48	49	53	43	49	52	52	48
	Share of youth (20-34), in %	62	54	63	58	77	64	50	61	58	61	59	70	59	50
	Share of highly educated, in %	28	34	23	24	19	19	38	40	41	51	41	28	24	39
	Share of highly skilled of employed, in %	31	45	29	27	15	6	24	40	50	50	49	17	17	25
Share as a % of origin population	0.17	0.04	0.08	0.04	0.26	0.64	2.92	0.21	0.05	0.12	0.06	0.42	0.54	2.72	
Difference to non-mobile population, in percentage points	Employment rate, in %	1	-7	0	-6	18	8	-10	3	-4	13	2	10	-1	-11
	Unemployment rate, in %	4	6	8	13	-5	5	7	1	6	-3	0	-2	9	7
	Non-employment rate, in %	-1	7	0	6	-18	-8	10	-3	4	-13	-2	-10	1	11
	Employment rate one year ago, in %	-6	-14	-6	-12	9	-1	2	-4	-5	1	-6	0	-11	3
	Unemployment rate one year ago, in %	7	7	4	9	-4	4	1	2	-3	-4	-4	1	14	1
	Non-employment rate one year ago, in %	6	14	6	12	-9	1	-2	4	5	-1	6	0	11	-3
	Share of female, in %	1	0	-4	0	-1	10	-2	0	3	-6	0	2	2	-2
	Share of youth (20-34), in %	32	24	32	27	43	31	21	32	30	34	32	38	27	20
	Share of highly educated, in %	8	14	6	7	5	9	7	16	16	30	20	8	9	6
	Share of highly skilled of employed, in %	-8	5	-7	-9	-20	-17	0	-1	8	14	12	-19	-8	0

Note: Data are pooled over the two respective years, except for the United States where the data refer to 2011, due to data availability. The share of highly-skilled of employed refers to the percentage of those in highly-skilled employment among all employed. Return migrants (migrants returning to their country or state of origin) are not included in the definition of recent migrants. Recent migrants are migrants who moved to the respective zone in the last year with the exception of migrants from the countries which joined the EU in 2007 and 2004 (i.e. the EU-2 and the EU-10, respectively) and from Southern Europe, who have moved to another EU-27/EFTA country and, in the latter case, to a country of the Eurozone. Eurozone countries are the 17 member countries since 2011. Southern Europe refers to Greece, Italy, Spain, and Portugal. The differences with the non-mobile population are calculated as mobile *minus* non-mobile population in the respective origin region. For example, 24% of recent free-mobility migrants from Romania and Bulgaria are highly-educated, compared with only 15% of the Romanians and Bulgarians who still reside in their origin country.

Source: European Labour Force Survey, American Community Survey.

A further interesting observation is that naturalised immigrants in Europe are more mobile than natives and thus have a higher potential to alleviate regional labour market shocks than European natives. In results not shown in Table 1, we find that 7.5% of the migrants with EU-27/EFTA nationality in 2011/2012 were not born in that region. This share is about twice as large as their share among the entire population in the EU-27/EFTA. This shows that the intra-EU-27/EFTA mobility among this group, who already migrated at an earlier stage – in this case into Europe – is much larger than for native-born citizens. Thus, it appears that this group, which consists presumably of naturalised migrants, are more likely to migrate than the native-born. Naturalised migrants with a nationality from a country of Southern Europe, especially naturalised Spaniards, Italians and Portuguese, appear to be particularly mobile. The share of naturalised immigrants with Southern European nationality among the intra-EU-27/EFTA migrants from Southern Europe is about 17%, that is about three times higher than the population share of naturalised immigrants in Southern Europe.

5. EMPIRICAL APPROACH

In the following, we measure shocks by increases in the regional un-/non-employment rate relative to the respective rate of the economic area of interest.⁷ Annex 1 provides an overview of the regions with the strongest changes. The unemployment rate is the standard indicator for labour market shocks. Many labour economists, however, like to supplement it with the non-employment (or employment) rate in order to get a more accurate picture of the state of the labour market (Cadena and Kovak, 2013). In the following, we will therefore use both indicators to measure the state of the labour market and the economy in general. Similar to a study by Puhani (2001) on labour mobility as a potential adjustment mechanism for economic shocks in Europe, we will investigate the statistical relationship between population changes in a region (both total population changes and changes induced by population changes of nationals within the free-mobility area) and the regional unemployment rate relative to the overall unemployment rate in the free-mobility area. Likewise, we include regional GDP/income per capita relative to the overall GDP/income per capita in the free-mobility area as a proxy for relative wages.⁸ As pointed out by Harris and Todaro (1970), migration is determined by the expected wage, which is a positive function of the wage and a negative function of the unemployment (or non-employment) rate.

⁷ We also include GDP/income per capita shocks. It would be preferable to include real wages but unfortunately such data are not available at the regional level.

⁸ By using relative measures, we assume that the decision to migrate or not is affected by the labour market situation in a given region relative to that elsewhere in the free-mobility area.

Our model is based on the concept of the population growth factor generated by net migration in a region being “produced” by its un-/non-employment rate and income per capita level relative to the unemployment rate and income per capita in the whole economic area (here the EU-27/EFTA, the Eurozone, or the United States).⁹ Annex 1 shows the descriptive statistics for the relative un-/non-employment rates. Hence, we set up the following production-function-like model:

$$\frac{mig_{it}+pop_{it-1}}{pop_{it-1}} = A_{it} \left(\frac{ur_{it-1}^{\alpha_1} y_{it-1}^{\alpha_2}}{ur_{nt-1}^{\alpha_1} y_{nt-1}^{\alpha_2}} \right), \quad (1)$$

where *mig* indicates net migration and *pop* the population level. The relative unemployment rate $\left(\frac{ur_i}{ur_n}\right)$ in equation (1) equals the ratio of the unemployment rate in region *i* and the unemployment rate of the whole economic area *n* (EU-27/EFTA, Eurozone or United States). The relative non-employment rate $\left(\frac{nr_i}{nr_n}\right)$ is calculated in the same manner, as is the proxy measure of relative income per capita $\left(\frac{y_i}{y_n}\right)$.

Because our data do not allow us to observe net migration directly, we proxy the migration-induced population growth factor by the *actual* population growth factor as it is observed in the data. Hence,

$$\frac{mig_{it}+pop_{it-1}}{pop_{it-1}} \approx \frac{\Delta pop_{it}+pop_{it-1}}{pop_{it-1}} = \frac{pop_{it}}{pop_{it-1}} \quad (2)$$

The following regressions are estimated separately for two dependent variables. In a first set of regressions, the total population change in a region is the dependent variable. It is henceforth called the ‘*population growth factor*’ and is defined as $\left(\frac{pop_{it}}{pop_{it-1}}\right)$, where *pop* is the working-age population in region *i*. In a second set of regressions, the dependent variable is approximately the percentage change of the population that is induced by inter-regional movements of nationals of the free-mobility zone, hereafter referred to as the ‘*free-mobility-induced population growth factor*’. It is defined as $\left(\frac{\Delta fmp_{it}+pop_{t-1}}{pop_{t-1}}\right)$, where $\square fmp$ characterises the *change* (proxy for *net migration*) in the working-age population who are nationals of countries in the free-mobility area, that is $fmp_{it} - fmp_{it-1}$.

Thus, the simulated free-mobility-zone-migration-induced population change is the hypothetical population growth factor that would have been observed had the population only varied due to the changes in the number of free-mobility-zone migrants in that region. Ideally, we would like to measure migration-

⁹ By relating a flow (migration proxied by population change) to a stock (the lagged unemployment or non-employment rate), we build on the matching function literature, which is based on an analogy to the production function where the flow of new hires is “produced” by the stock of unemployed workers and vacancies (see Petrongolo and Pissarides, 2001 for a survey of this literature).

induced population change in all our regressions, but instead, the data only allow us to measure the total population change. This means, for example, that we also capture population ageing – if more people pass our upper age limit of 64 than our lower age limit of 15, this shows up as a negative population change (i.e. a population growth factor smaller than one) – even if no migration is taking place. Although we would much prefer to have data on interregional migration flows directly, this measurement error need not be a problem for our analysis: any measurement error that is constant over our estimation period in any given region (such as steady population aging) will not bias our estimates, because the region fixed effects will control for these time-constant measurement errors in the population change. To the extent that all regions in the free-mobility zone also experience a common trend in population ageing or any other measurement error, this measurement error will be controlled for by the fixed time (year) effects in our regressions. Even time-varying measurement error that is specific to certain regions will not bias our coefficient of interest as long as this measurement error is not correlated with either the relative unemployment or non-employment rate.¹⁰

Combining expressions (1) and (2) and taking logs, we obtain the following estimating equation:

$$\ln\left(\frac{pop_{it}}{pop_{it-1}}\right) = \alpha_0 + \alpha_1 \ln\left(\frac{ur_{it-1}}{ur_{nt-1}}\right) + \ln\left(\frac{y_{it-1}}{y_{nt-1}}\right) + \eta_t + \mu_i + \varepsilon_{it} \quad (3)$$

Note that the unemployment rate and the income variables for the whole economic area ur_{nt-1} and y_{nt-1} , which are included in the denominators of the right-hand side of the estimating equation, do not vary over time and are thus captured by the time fixed effects η_t ; the normalization of the regressors by these variables for the whole economic area therefore has no effect on the empirical estimates. A ceteris paribus increase of 1% in the number of unemployed people amounts to a ceteris paribus increase of 1% (not one percentage point) in the relative unemployment rate, because

$$1.01 \times \frac{ur_{it-1}}{ur_{nt-1}} = \frac{1.01 \times \left(\frac{u_{it-1}}{wf_{it-1}}\right)}{\left(\frac{u_{nt-1}}{wf_{nt-1}}\right)} \quad (4)$$

In the first set of regressions, we simulate how many persons migrate in year t for each additional person unemployed in year $t-1$.¹¹ By restricting the measurement of population change to migration of nationals from within the area under consideration in the second set of regressions, we can also isolate the

¹⁰ There is only a very small and insignificant correlation between the changes in the regional demographic structure (measured as the changes of the population ratio between 15-34 year olds and 35-64 year olds) and changes in regional un-/non-employment.

¹¹ We also ran separate regressions for the population aged 15-24 (available upon request). The results indicate, not surprisingly, that this group tends to be more responsive to changes in the relative regional labour market conditions than the overall working-age population.

size of the contribution of this particular group to the migratory response to regional unemployment dispersion and compare the intra-free mobility of the EU-27/EFTA area with interregional migration in the United States.

6. ANALYSIS

We estimate regressions at two different regional levels in the free-mobility areas under consideration (EU-27/EFTA, Eurozone and the United States). Both OLS and fixed effects (FE) regressions are estimated. The FE estimates control for time-constant unobserved factors, such as time-constant measurement errors or time-constant differences in amenities (climate, infrastructure) that are unobserved but have an impact on net migration into a region. Whereas the OLS estimator uses all the variation in the data (within and between regions), the FE estimator only uses the variation in the dependent and impact variables over time in each region, that is the so-called “within” variation in the data. The advantage of FE over OLS estimates is that time-constant unobserved factors (including measurement error) that influence net migration and are correlated with any impact variable will not lead to biased estimates once fixed region effects are included into the regression. We display coefficients for the full observation period 2006-2011 (because data on the lagged regressors unemployment and income per capita start already in 2005) and for the subperiods 2006-2008 (*before* the financial crisis) and 2009-2011 (*after* the financial crisis).

Table 2 shows the regression results for the full period (2006-2011). The OLS regressions generally indicate a statistically significant negative effect of relative unemployment on population growth, with the exception of the Eurozone at the NUTS-1 and the United States at state level, whereas none of the estimates for non-employment are both significant and positive. In contrast, in the FE specification almost all unemployment coefficients, with the exceptions of the Eurozone at the NUTS-1 and the United States at the SuperPUMA level, are significant.¹² The coefficient of -0.017 for the Eurozone at NUTS-2 over the full period can be interpreted as follows: if the number of unemployed persons in the previous year increases by 1% *ceteris paribus*, the population growth rate in that region decreases by 0.017%.

¹² For estimates in Table 2, we have also experimented with Driscoll and Kraay (1998) standard errors, which allow for spatial correlation and autocorrelation of the errors terms. Several of the estimated standard errors were very similar to the reported standard errors, some were smaller, some bigger. Because Driscoll and Kraay (1998) standard errors require large T (that is a large number of time periods) and because our observation period is fairly short, especially when we report results for subperiods, we only report heteroskedasticity-robust standard errors that are clustered by region (in the OLS estimates) here and in the following tables.

In order to interpret the above coefficients correctly, we have to take into account that unemployed people are usually only a small fraction of the population. Therefore, in Annex 2 we interpret the estimation coefficients at the sample means. For example, the average number of unemployed people in a Eurozone NUTS-2 region in our sample over the whole period is about 82 700 people. A 1% increase in this number corresponds to 826 people. Thus, if unemployment in the previous year increases by 827 people, the population decreases by 0.017%. How large is that number? The average population size for a Eurozone NUTS-2 region in our sample is 1 286 000 people, 0.017% of which are 219 people. Thus, 827 additional unemployed in a region in year $t-1$ decreases the population in the region in year t by 219 people according to our estimates. This means that up to 27% of the unemployment increase may be offset by a population change/out-migration. This is non-negligible and higher than previous estimates, such as those reported by Puhani (2001) which suggest a migration offset of 4 and 8% over the period for Italy and France, respectively.¹³ Note, however, that these estimates provide upper bounds for the impact, since not all migration movements will be of unemployed people, and not all of those who move will take up employment elsewhere (see also our descriptive statistics in Section 3).

Table 3 disaggregates the results into the pre- and post-crisis periods, for the FE specification which is our preferred one. In general, we obtain negative coefficients both for the unemployment and the non-employment measure, but due to limited sample sizes, not all of them are statistically significant. Here, it is interesting to observe that during the period of the financial crisis 2009-2011 (with the unemployment and income series referring to 2008 due to the lagged specification), our point estimates for the two European areas are much larger than for the period 2006-2008, whereas the reverse is the case in the United States. Indeed, our point estimates suggest that the pre-crisis labour mobility reaction to asymmetric labour market shocks was stronger in the United States than in Europe, in line with the previous results in the literature. However, this pattern appears to have changed quite drastically with the crisis, with Europe now showing a stronger interregional adjustment reaction than the United States. We find, for example at the NUTS-2 level in the EU-27/EFTA, that in the period 2009-2011 up to 37% of the increase in unemployment was adjusted for by a population change, whereas the potential adjustment was only 7% and non-significant in the pre-crisis period (see the simulations in Table A3). For the estimates using relative non-employment as the impact variable, the simulation results are very similar, 36% during the crisis and an insignificant 12% in the pre-crisis period (Table A4).

¹³ These estimates refer to the period 1985 to 1996. For Western Germany, Puhani (2001) reported an estimated offset of up to 30%; however, this period covered German reunification which was associated with large-scale movements from East to West Germany.

Table 2: Unemployment, non-employment, and population change 2006-2011

	OLS EU-27/ EFTA	OLS Eurozone	OLS USA	FE EU-27/ EFTA	FE Eurozone	FE USA
Effect of Lagged Relative Unemployment						
NUTS-1/States						
log relative unemployment rate (s.e.)	-0.007*** (0.002)	-0.002 (0.003)	-0.004 (0.004)	-0.018*** (0.006)	-0.009 (0.006)	-0.021** (0.009)
log relative income (s.e.)	0.004*** (0.001)	0.003 (0.004)	0.006 (0.006)	-0.010 (0.009)	0.036 (0.022)	0.058 (0.04)
R2 / R2 within	0.120	0.030	0.508	0.108	0.058	0.616
Number of regions	97	62	51	97	62	51
Number of time periods	6	6	6	6	6	6
Number of observations	578	368	305	578	368	305
NUTS-2/SuperPUMA						
log relative unemployment rate (s.e.)	-0.005*** (0.001)	-0.005** (0.002)	-0.006*** (0.002)	-0.016*** (0.004)	-0.017*** (0.006)	-0.006 (0.004)
log relative income (s.e.)	0.003*** (0.001)	-0.001 (0.003)	0.004** (0.002)	-0.008 (0.009)	0.005 (0.018)	0.034** (0.017)
R2 / R2 within	0.024	0.009	0.222	0.022	0.017	0.251
Number of regions	273	167	532	273	168	532
Number of time periods	6	6	6	6	6	6
Number of observations	1,605	985	3,182	1,605	985	3,182
Effect of Lagged Relative Non-employment						
NUTS-1/States						
log relative non-employment rate (s.e.)	0.004 (0.004)	0.008** (0.003)	0.006 (0.006)	-0.092*** (0.019)	-0.022 (0.015)	-0.077** (0.033)
log relative income (s.e.)	0.006*** (0.001)	0.006* (0.003)	0.008 (0.005)	-0.009 (0.008)	0.040* (0.023)	0.062 (0.044)
R2 / R2 within	0.082	0.042	0.506	0.151	0.055	0.614
Number of regions	97	62	51	97	62	51
Number of time periods	6	6	6	6	6	6
Number of observations	578	368	305	578	368	305
NUTS-2/SuperPUMA						
log relative non-employment rate (s.e.)	-0.003 (0.003)	0.000 (0.005)	-0.001 (0.004)	-0.087*** (0.018)	-0.099*** (0.024)	-0.087*** (0.013)
log relative income (s.e.)	0.004*** (0.001)	0.003 (0.002)	-0.001 (0.002)	-0.006 (0.007)	-0.000 (0.016)	-0.007 (0.016)
R2 / R2 within	0.018	0.004	0.219	0.033	0.035	0.263
Number of regions	273	167	532	273	167	532
Number of time periods	6	6	6	6	6	6
Number of observations	1,605	985	3,182	1,605	985	3,182

Note: *** p<0.01, ** p<0.05, * p<0.1. All regressions include year fixed effects.

Source: European Labour Force Survey, American Community Survey.

Table 3: Unemployment, non-employment, and population change in Europe and the United States before and after the crisis

	FE EU-27/ EFTA 2006-08	FE EU-27/ EFTA 2009-11	FE Eurozone 2006-08	FE Eurozone 2009-11	FE USA 2006-08	FE USA 2009-11
Effect of Lagged Relative Unemployment						
NUTS-1/States						
log relative unemployment rate	-0.003	-0.019*	0.009	-0.009	-0.039*	-0.016*
(s.e.)	(0.006)	(0.011)	(0.011)	(0.014)	(0.021)	(0.009)
log relative income	0.001	0.049	0.030	0.074	0.016	0.121*
(s.e.)	(0.01)	(0.033)	(0.025)	(0.091)	(0.079)	(0.072)
R2 / R2 within	0.009	0.076	0.020	0.024	0.716	0.132
Number of regions	97	97	62	62	51	51
Number of time periods	3	3	3	3	3	3
Number of observations	287	291	182	186	152	153
NUTS-2/SuperPUMA						
log relative unemployment rate	-0.004	-0.025**	0.004	-0.023	-0.011	-0.008
(s.e.)	(0.01)	(0.011)	(0.026)	(0.017)	(0.007)	(0.009)
log relative income	0.001	0.026	0.016	0.017	0.082**	-0.020
(s.e.)	(0.017)	(0.037)	(0.033)	(0.112)	(0.035)	(0.033)
R2 / R2 within	0.001	0.024	0.001	0.016	0.400	0.006
Number of regions	273	272	167	167	531	532
Number of time periods	3	3	3	3	3	3
Number of observations	800	805	494	491	1,589	1,593
Effect of Lagged Relative Non-employment						
NUTS-1/States						
log relative non-employment rate	-0.070**	-0.135***	0.013	-0.024	-0.065	-0.052
(s.e.)	(0.032)	(0.033)	(0.018)	(0.027)	0.068	0.046
log relative income	-0.004	0.024	0.025	0.073	0.027	0.115
(s.e.)	(0.01)	(0.027)	(0.022)	(0.095)	(0.072)	(0.1)
R2 / R2 within	0.062	0.166	0.017	0.025	0.704	0.126
Number of regions	97	97	62	62	51	51
Number of time periods	3	3	3	3	3	3
Number of observations	287	291	182	186	152	153
NUTS-2/SuperPUMA						
log relative non-employment rate	-0.042	-0.130***	-0.060	-0.154***	-0.135***	-0.030
(s.e.)	(0.048)	(0.035)	(0.085)	(0.056)	(0.022)	(0.023)
log relative income	-0.001	0.022	0.005	-0.047	0.028	-0.027
(s.e.)	(0.016)	(0.036)	(0.03)	(0.108)	(0.034)	(0.032)
R2 / R2 within	0.004	0.047	0.005	0.052	0.422	0.006
Number of regions	273	272	167	167	531	532
Number of time periods	3	3	3	3	3	3
Number of observations	800	805	494	491	1,589	1,593

Note: *** p<0.01, ** p<0.05, * p<0.1. All regressions include year fixed effects.

Source: European Labour Force Survey, American Community Survey.

Up to now, we have looked at the association between labour market disparities and all migration-induced population changes. Of particular interest is the population change that is generated by *nationals* within the free-mobility zone, as nationals of third countries from outside the respective region do not necessarily enjoy the same mobility rights.¹⁴ Tables 4 and 5 present the OLS and FE results under this alternative specification, for the full period in the former table, and the FE results disaggregated between the pre- and post-crisis periods in the latter. In general, and not surprisingly, restricting the sample to nationals from within the free-mobility zone tends to weaken the association somewhat. This holds particularly in the Eurozone, where per-capita migration flows from nationals outside of the free-mobility zone are much higher than in the United States (see OECD, 2013; Cadena and Kovak, 2013, still demonstrate that Mexican migrants played a significant role in the absorption of labour market shocks in the United States during the crisis). Despite of a weaker association between regional population changes and labour market shocks for nationals, most significant coefficients maintain the expected sign when restricting population changes in the dependent variable to those induced by nationals only. What is striking, however, is that in both Tables 4 and 5, the coefficients for the Eurozone exhibit no estimates that are both negative and statistically significant. This contrasts with the estimates for the EU-27/EFTA, where negative and statistically significant estimates are also found for migration due to nationals of the free mobility zone, particularly for non-employment during the crisis years 2009-2001. Taking these different sets of estimates for the Eurozone and the EU-27/EFTA together, we conclude that labour market adjustment in Europe during the crisis was driven primarily by citizens from outside the Eurozone, such as the recent EU accession countries or non-EU-27/EFTA countries.

¹⁴ However, it is possible that part of the measured effect arises from naturalisations, i.e. immigrants with a non-EU-27/EFTA nationality taking up citizenship of their respective host countries – and this is, as we have seen in Box 1, a group that is particularly mobile. To see how this might influence our results, we also ran our estimations for population change that is induced only by inter-regional movements of persons born within the free-mobility zone, thus excluding immigrants born outside the EU-27/EFTA area who obtained EU-27/EFTA nationality in the meantime. The results, which are available upon request, remain similar to the results presented in Tables 4 and 5, but the coefficients are slightly smaller and have somewhat lower t-statistics.

Table 4: Unemployment, non-employment, and population change generated by nationals of the area under consideration

	OLS EU-27/ EFTA	OLS Eurozone	OLS USA	FE EU-27/ EFTA	FE Eurozone	FE USA
Effect of Lagged Relative Unemployment						
NUTS-1/States						
log relative unemployment rate (s.e.)	-0.005*** (0.002)	-0.000 (0.002)	-0.004 (0.004)	-0.005 (0.006)	0.008* (0.004)	-0.021** (0.009)
log relative income (s.e.)	0.004*** (0.001)	-0.001 (0.003)	0.005 (0.005)	-0.002 (0.012)	0.025 (0.021)	0.034 (0.031)
R2 / R2 within	0.087	0.040	0.454	0.046	0.055	0.547
Number of regions	97	62	51	97	62	51
Number of time periods	6	6	6	6	6	6
Number of observations	578	368	305	578	368	305
NUTS-2/SuperPUMA						
log relative unemployment rate (s.e.)	-0.003*** (0.001)	-0.002 (0.002)	-0.005*** (0.002)	-0.006 (0.004)	0.001 (0.005)	-0.007* (0.004)
log relative income (s.e.)	0.003*** (0.001)	-0.001 (0.002)	-0.004** (0.002)	-0.001 (0.009)	0.007 (0.018)	0.005 (0.016)
R2 / R2 within	0.018	0.013	0.196	0.009	0.013	0.219
Number of regions	273	167	532	273	167	532
Number of time periods	6	6	6	6	6	6
Number of observations	1,605	985	3,182	1,605	985	3,182
Effect of Lagged Relative Non-employment						
NUTS-1/States						
log relative non-employment rate (s.e.)	0.005 (0.004)	0.005** (0.002)	0.005 (0.006)	-0.034** (0.016)	0.021* (0.011)	-0.076** (0.031)
log relative income (s.e.)	0.006*** (0.002)	0.001 (0.003)	0.007 (0.005)	-0.003 (0.01)	0.023 (0.019)	0.040 (0.04)
R2 / R2 within	0.070	0.047	0.452	0.053	0.054	0.543
Number of regions	97	62	51	97	62	51
Number of time periods	6	6	6	6	6	6
Number of observations	578	368	305	578	368	305
NUTS-2/SuperPUMA						
log relative non-employment rate (s.e.)	-0.001 (0.003)	0.000 (0.004)	-0.000 (0.003)	-0.029* (0.016)	-0.016 (0.023)	-0.087*** (0.012)
log relative income (s.e.)	0.004*** (0.001)	0.001 (0.002)	-0.002 (0.002)	-0.001 (0.008)	0.001 (0.017)	-0.035** (0.016)
R2 / R2 within	0.015	0.012	0.194	0.011	0.014	0.231
Number of regions	273	167	532	273	167	532
Number of time periods	6	6	6	6	6	6
Number of observations	1,605	985	3,182	1,605	985	3,182

Note: *** p<0.01, ** p<0.05, * p<0.1. All regressions include year fixed effects.

Source: European Labour Force Survey, American Community Survey.

Table 5: Unemployment, non-employment, and population change generated by nationals of the area under consideration, before and after the crisis

	FE EU-27/ EFTA 2006-08	FE EU-27/ EFTA 2009-11	FE Eurozone 2006-08	FE Eurozone 2009-11	FE USA 2006-08	FE USA 2009-11
Effect of Lagged Relative Unemployment						
NUTS-1/State						
log relative unemployment rate	0.005	-0.001	0.053**	0.003	-0.042*	-0.022***
(s.e.)	(0.008)	(0.013)	(0.022)	(0.012)	(0.022)	(0.007)
log relative income	-0.029	0.065*	0.113**	-0.007	0.025	0.089
(s.e.)	(0.057)	(0.037)	(0.048)	(0.122)	(0.066)	(0.083)
R2 / R2 within	0.075	0.048	0.208	0.005	0.640	0.090
Number of regions	97	97	62	62	51	51
Number of time periods	3	3	3	3	3	3
Number of observations	287	291	182	186	152	153
NUTS-2/SuperPUMA						
log relative unemployment rate	0.003	-0.009	0.030	0.002	-0.013**	-0.009
(s.e.)	(0.01)	(0.01)	(0.025)	(0.015)	(0.006)	(0.008)
log relative income	-0.005	0.025	0.059*	-0.013	0.059*	-0.052
(s.e.)	(0.032)	(0.035)	(0.035)	(0.098)	(0.031)	(0.032)
R2 / R2 within	0.008	0.008	0.032	0.007	0.350	0.004
Number of regions	273	272	167	167	531	532
Number of time periods	3	3	3	3	3	3
Number of observations	800	805	494	491	1,589	1,593
Effect of Lagged Relative Non-employment						
NUTS-1/State						
log relative non-employment rate	0.057	-0.081**	0.110***	-0.005	-0.058	-0.073
(s.e.)	(0.04)	(0.037)	(0.023)	(0.022)	(0.069)	(0.062)
log relative income	-0.027	0.036	0.091**	-0.022	0.045	0.080
(s.e.)	(0.05)	(0.032)	(0.037)	(0.118)	(0.069)	(0.123)
R2 / R2 within	0.086	0.091	0.221	0.004	0.622	0.080
Number of regions	97	97	62	62	51	51
Number of time periods	3	3	3	3	3	3
Number of observations	287	291	182	186	152	153
NUTS-2/SuperPUMA						
log relative non-employment rate	0.031	-0.062*	0.078	-0.055	-0.145***	-0.023
(s.e.)	(0.043)	(0.032)	(0.075)	(0.052)	(0.02)	(0.023)
log relative income	-0.005	0.021	0.047	-0.065	0.002	-0.056*
(s.e.)	(0.03)	(0.034)	(0.031)	(0.098)	(0.031)	(0.033)
R2 / R2 within	0.009	0.016	0.029	0.015	0.378	0.004
Number of regions	273	272	167	167	531	532
Number of time periods	3	3	3	3	3	3
Number of observations	800	805	494	491	1,589	1,593

Note: *** p<0.01, ** p<0.05, * p<0.1. All regressions include year fixed effects.

Source: European Labour Force Survey, American Community Survey.

7. CONCLUSION

This paper aimed at analysing the migration response to asymmetric labour market conditions in the pre- and post-crisis periods in Europe and the United States. We find that prior to the crisis, the migration response to labour market shocks was stronger in the United States, in line with previous results in the literature. This picture appears to have changed with the crisis and the evidence suggests that migration in Europe seems to have reacted quite strongly to changes in labour market conditions – more so than in the United States, where internal mobility seems to have declined, at least over the initial post-crisis period 2009-2011

The increase in labour mobility in Europe is linked to the EU enlargements of 2004 and 2007 which greatly increased the scope of free labour mobility within the EU/EFTA and the Eurozone. By doing so, it added to the adjustment capacity of the labour markets to cope with asymmetric shocks. It is also conceivable that there may be threshold effects at work, i.e. that intra-European mobility has grown disproportionately only once labour market disparities have reached a certain level. Indeed, these disparities have widened more strongly with the crisis in Europe than in the United States and are now, in terms of unemployment at the larger regional level, more than twice as large in Europe as in the United States.

As the economic gaps within the Eurozone are large and widening, the “push” factors for more emigration from the Southern periphery countries and Ireland should remain strong in the coming years. Although it cannot, by itself, be the sole solution to resist negative shocks, one would thus expect labour migration flows to reach significant levels and to help in reducing labour market disparities.¹⁵ However, our findings suggest that within the Eurozone, adjustment due to labour migration occurred mostly due to citizens from recent EU accession countries or non-EU-27/EFTA countries, and less from citizens within the Eurozone. In addition, a significant part of the effect attributed to citizens from these countries seems to stem from naturalised immigrants. Raising the contribution of Eurozone citizens to labour market adjustment within the Eurozone requires a continued move towards freer movement of labour within Europe. While this is not certain given the current unfavourable climate of public opinion in many countries towards increased migration for employment, the evidence presented in this paper suggests that it

¹⁵ Note also that the flows from Southern Europe continue to grow, albeit at relatively low levels. The example of Germany, together with the United Kingdom the largest recipient of these flows, illustrates this well. In the first half of 2013, new registered inflows of citizens from Spain and Italy to Germany increased by about 40% compared with the first half of 2012. Inflows of Portuguese increased by more than 25% while those of Greeks declined slightly. However, flows from all four of these countries were still only 2/3 of those of Poles alone, and even slightly below those of Romanians.

would have favourable effects in terms of helping labour mobility to be a key adjustment mechanism against asymmetric shocks.

BIBLIOGRAPHY

- Beine, M., P. Bourgeon and J.-C. Bricongne (2013), “Aggregate Fluctuations and International Migration”, CESifo Working Paper No. 4379.
- Bentivogli, Ch. and P. Pagano (1999), “Regional Disparities and Labour Mobility: the Euro-11 versus the USA”; *Labour*, 13, 737-760.
- Bertoli, S., H. Brücker and J. Fernández-Huertas Moraga (2013), “The European Crisis and Migration to Germany. Expectations and the Diversion of Migration Flows”, IZA Discussion Paper No. 7170.
- Blanchard, O.J., L.F. Katz, R. E. Hall and B. Eichengreen (1992), “Regional Evolutions”, *Brookings Papers on Economic Activity*, 1, 1-75.
- Bräuninger, D. and C. Majowski (2011), “Labour mobility in the euro area”. Deutsche Bank Research, Reports on European integration EU Monitor 85.
- Cadena, B.C. and B.K. Kovak (2013), “Immigrants Equilibrate Local Labor Markets: Evidence from the Great Recession”, NBER Working Paper No. 19727, Cambridge, MA.
- Caroleo, F.E. and F. Pastore (2010), “Structural Change and Labour Reallocation Across Regions: A Review of the Literature”, in: Caroleo, F.E. and F. Pastore (eds.): *The Labour Market Impact of EU Enlargement, A New Regional Geography of Europe?*, 17-47, Heidelberg: Physica/Springer.
- Christodoulakis, G.A. and E.C. Mamatzakis (2010), “Labour Market Dynamics in Greek Regions: A Bayesian Markov Chain Approach Using Proportions Data”, *Review of Economic Analysis*, 2, 32-45.
- Coen-Pirani, D. (2010), “Understanding Gross Worker Flows Across U.S. States”, *Journal of Monetary Economics*, 57, 769-784.
- Dao, M., D. Furceri, and P. Loungani (2013), “Regional labour market adjustments in the US and Europe”, forthcoming IMF Working Paper.
- Decressin, J. and A. Fatás (1995), “Regional labor market dynamics in Europe”. *European Economic Review*, 39, 1627-1655.
- Driscoll, J.C. and A.C. Kraay (1998): Consistent Covariance Matrix Estimation with Spatially Dependent Panel Data, *Review of Economics and Statistics*, 80, 549-560.
- Elsner, B. and K.F. Zimmermann (2013), “10 Years After. EU Enlargement, Closed Borders, and Migration to Germany”, IZA Discussion Paper No. 7130.
- Fidrmuc, J. (2004), “Migration and Regional Adjustment to Asymmetric Shocks in Transition Economies”, *Journal of Comparative Economics*, 32, 230-247.
- Gallin, J.H. (2004), “Net Migration and State Labor Market Dynamics”, *Journal of Labor Economics*, 22, 1-21.
- Harris, J.R. and M.P. Todaro (1970), “Migration, Unemployment and Development: A Two-Sector Analysis”, *American Economic Review*, 60, 126-142.

- Heinz, F.F. and M. Ward-Warmedinger (2006), “Cross-Border Labour Mobility Within An Enlarged EU”, Occasional Paper Series No. 52, European Central Bank.
- Huber, P. (2007), “Regional Labour Market Developments in Transition: A Survey of the Empirical Literature”, *European Journal of Comparative Economics*, 4, 263-298.
- Kaplan, G. and S. Schulhofer-Wohl (2012), “Understanding the Long-Run Decline in Interstate Migration”, NBER Working Paper No. 18507, Cambridge, MA.
- Jimeno, J.F. and S. Bentolila (1998), “Regional Unemployment Persistence (Spain, 1976-1994)”, *Labour Economics*, 5, 25-51.
- Kahanec, M. (2012), “Labor Mobility in an Enlarged European Union”, IZA Discussion Paper No. 6485, Bonn.
- Kennan, J. and J.R. Walker (2011), “The Effect of Expected Income on Individual Migration Decisions”, *Econometrica* 79: 211-251.
- Martin, J.P. and S. Scarpetta (2012), “Setting It Right: Employment Protection, Labour Reallocation and Productivity”, *De Economist*, Springer, 160(2), 89-116.
- Molloy, R.; C.L. Smith and A.K. Wozniak (2011), “Internal Migration in the United States”, National Bureau of Economic Research Working Paper No. 17307.
- Mundell, R.A. (1961), “A Theory of Optimum Currency Areas”, *American Economic Review*, 51, 657-665.
- OECD (2013), *International Migration Outlook*. OECD Publishing, Paris.
- OECD (2012), *Free Movement of Workers and Labour Market Adjustment - Recent Experiences from OECD Countries and the European Union*. OECD Publishing, Paris.
- Overman, H.G., D. Puga and H. Vandenbussche (2002), “Unemployment Clusters Across Europe’s Regions and Countries”, *Economic Policy*, 17, 115-147.
- Petrongolo, B. and C. A. Pissarides (2001), “Looking into the Black Box: A Survey of the Matching Function”, *Journal of Economic Literature*, 39, 390-431.
- Puhani, P.A. (2001), “Labour Mobility. An Adjustment Mechanism in Euroland? Empirical Evidence for Western Germany, France and Italy”, *German Economic Review*, 2, 127-140.
- Snower, D.J. and C. Merkl (2006), “The Caring Hand that Cripples: The East German Labor Market after Reunification”, *American Economic Review*, 96, 375-382.
- Treyz, G.I., D.S. Rickman, G.L. Hunt and M.J. Greenwood (1993), “The Dynamics of U.S. Internal Migration”, *Review of Economics and Statistics*, 75, 209-214.
- Uhlig, H. (2006), “Regional Labor Markets, Network Externalities and Migration: The Case of German Reunification”, *American Economic Review Papers and Proceedings*, 96, 383-387.
- Uhlig, H. (2008), “The Slow Decline of East Germany”, *Journal of Comparative Economics*, 36, 517-541.

Von Weizsäcker, J. (2008), "Divisions of Labour: rethinking Europe's migration policy", Bruegel Blueprint Series, No. 6, Brussels.

ANNEX 1: RELATIVE UNEMPLOYMENT AND NON-EMPLOYMENT RATES

The relative unemployment rate, i.e. the ratio of the regional unemployment rate and the overall unemployment rate in the area under consideration, can take any non-negative real number. For example, the NUTS-2 region “Oberfranken” in Germany had a regional unemployment rate of around 13.3 % in 2006. The unemployment rate in the whole EU-27/EFTA zone was around 8.2%. The relative unemployment rate is thus:

$$\frac{\text{regional unemployment rate}}{\text{unemployment rate in EU27/EFTA}} = \frac{13.3}{8.2} \approx 1.62$$

By 2011, the regional unemployment rate of “Oberfranken” had declined to around 3.4%, while the unemployment rate of the EU-27/EFTA increased to 9.6% and the relative unemployment rate therefore decreased to 0.35, i.e. a decline by 1.27. The decrease of the relative unemployment rate in “Oberfranken” was the strongest in the whole sample, followed closely by other German regions, which also saw big decreases in the relative unemployment rate (see Table A1). In contrast, the strongest increases in the relative unemployment rate were observed in several NUTS-2 regions in Spain headed by “Canarias” where the regional unemployment rate increased from 11.8% in 2006 to 29.8% in 2011. This resulted in a relative unemployment rate of about 1.42 in 2006 and 3.1 in 2011. The same measure can be applied to non-employment; Table A2 below provides an overview of the regions with the strongest changes.

Table A1: Evolution of the relative unemployment rate between 2006 and 2011

		EU-27/EFTA			USA			
		Country	NUTS-2 region		State	Superpuma		
bottom 10	↑ decrease	1	Germany	Oberfranken	-1.258	Pennsylvania	42152	-0.903
		2	Germany	Mecklenburg-Vorpommern	-1.312	Illinois	17505	-0.717
		3	Germany	Chemnitz	-1.242	Texas	48240	-0.703
		4	Germany	Thüringen	-1.152	Texas	48040	-0.646
		5	Germany	Brandenburg	-1.099	Pennsylvania	42153	-0.642
		6	Germany	Dresden	-1.063	Louisiana	22100	-0.625
		7	Germany	Sachsen-Anhalt	-1.077	Louisiana	22200	-0.621
		8	Germany	Berlin	-1.044	Washington	53040	-0.617
		9	Poland	Dolnoslaskie	-0.997	Arkansas	05500	-0.592
		10	Germany	Bremen	-0.950	Michigan	26124	-0.587
top 10	↓ increase	10	Spain	Aragón	1.113	California	06301	0.513
		9	Ireland	Border, Midland and Western	1.135	Florida	12082	0.526
		8	Spain	Extremadura	0.992	California	06071	0.547
		7	Spain	Cataluña	1.214	Nevada	32201	0.554
		6	Spain	Castilla-La Mancha	1.319	California	06122	0.599
		5	Spain	Illes Balears	1.500	California	06202	0.604
		4	Spain	Comunidad Valenciana	1.544	California	06702	0.614
		3	Spain	Región de Murcia	1.696	Florida	12120	0.614
		2	Spain	Andalucía	1.636	Florida	12100	0.636
		1	Spain	Canarias	1.679	Florida	12150	0.688

Note: The French Region “Corse” is not reported above because of unresolved discrepancies with published data from Eurostat.

Source: European Labour Force Survey, American Community Survey.

Table A2: Evolution of the relative non-employment rate between 2006 and 2011

		EU-27/EFTA			USA			
		Country	NUTS-2 region		State	Superpuma		
bottom 10	↑ decrease	1	Germany	Chemnitz	-0.468	Texas	48130	-0.193
		2	Germany	Braunschweig	-0.292	Illinois	17503	-0.180
		3	Germany	Thüringen	-0.287	New York	36121	-0.175
		4	Germany	Oberfranken	-0.282	Mississippi	28600	-0.170
		5	Germany	Sachsen-Anhalt	-0.243	Louisiana	22702	-0.168
		6	Germany	Koblenz	-0.236	Texas	48185	-0.166
		7	Germany	Brandenburg	-0.217	New York	36111	-0.152
		8	Germany	Mecklenburg-Vorpommern	-0.215	Ohio	39040	-0.147
		9	Germany	Detmold	-0.212	Texas	48250	-0.136
		10	Germany	Lüneburg	-0.208	Alaska	02100	-0.134
top 10	↓ increase	10	Spain	Castilla-La Mancha	0.200	California	06071	0.162
		9	Spain	Aragón	0.206	Florida	12085	0.163
		8	Spain	Cataluña	0.216	Ohio	39030	0.163
		7	Spain	Andalucía	0.236	Florida	12120	0.166
		6	Ireland	Southern and Eastern	0.240	Florida	12070	0.171
		5	Spain	Canarias	0.278	Florida	12081	0.176
		4	Spain	Región de Murcia	0.280	Nevada	32202	0.180
		3	Ireland	Border, Midland and Western	0.288	Florida	12150	0.190
		2	Spain	Comunidad Valenciana	0.311	California	06705	0.192
		1	Spain	Illes Balears	0.338	Florida	12060	0.216

Note: The French Region Corse is not reported above because of unresolved discrepancies with published data from Eurostat.

Source: European Labour Force Survey, American Community Survey.

ANNEX 2: SIMULATIONS

Table A3: Simulated unemployment adjustment due to migration (based on FE models)

	Coeff.	Average Number of Unemployed	Average Population	1 Percent Change in Unemployment	Migration- Induced Population Change	Unemployment Adjustment due to Migration (%)
Larger Regions						
EU-27/EFTA NUTS-1						
All Migration						
2006-2011	-0.018	206 497	3 409 413	2 065	623	30
2006-2008	(-0.003)	180 681	3 369 941	1 807	(101)	(6)
2009-2011	-0.019	231 957	3 448 342	2 320	664	29
Only EU Citizens' Migration						
2006-2011	(-0.005)	206 497	3 409 413	2 065	(180)	(9)
2006-2008	(0.005)	180 681	3 369 941	1 807	(-153)	(-8)
2009-2011	(-0.001)	231 957	3 448 342	2 320	(24)	(1)
Eurozone NUTS-1						
All Migration						
2006-2011	(-0.009)	154 345	2 232 272	1 543	(196)	(13)
2006-2008	(0.009)	132 702	2 194 048	1 327	(-190)	(-14)
2009-2011	(-0.009)	175 636	2 269 876	1 756	(199)	(11)
Only Eurozone Citizens' Migration						
2006-2011	0.008	154 345	2 232 272	1 543	-170	-11
2006-2008	0.053	132 702	2 194 048	1 327	- 1 166	-88
2009-2011	(0.003)	175 636	2 269 876	1 756	(-76)	(-4)
USA States						
All Migration						
2006-2011	-0.021	247 921	4 034 056	2 479	846	34
2006-2008	-0.039	188 277	4 000 513	1 883	1 545	82
2009-2011	-0.016	307 176	4 067 379	3 072	652	21
Only US Citizens' Migration						
2006-2011	-0.021	247 921	4 034 056	2 479	867	35
2006-2008	-0.042	188 277	4 000 513	1 883	1 696	90
2009-2011	-0.022	307 176	4 067 379	3 072	910	30
Smaller Regions						
EU-27/EFTA NUTS-2						
All Migration						
2006-2011	-0.016	74 492	1 232 524	745	203	27
2006-2008	(-0.004)	65 510	1 229 990	655	(43)	(7)
2009-2011	-0.025	83 419	1 235 043	834	307	37
Only EU Citizens' Migration						
2006-2011	(-0.006)	74 492	1 232 524	745	(70)	(9)
2006-2008	(0.003)	65 510	1 229 990	655	(-40)	(-6)
2009-2011	(-0.009)	83 419	1 235 043	834	(112)	(13)
Eurozone NUTS-2						
All Migration						
2006-2011	-0.017	82 731	1 286 070	827	223	27
2006-2008	(0.004)	72 263	1 277 757	723	(-47)	(-7)
2009-2011	(-0.023)	93 263	1 294 433	933	(297)	(32)
Only Eurozone Citizens' Migration						
2006-2011	(0.001)	82 731	1 286 070	827	(-18)	(-2)
2006-2008	(0.030)	72 263	1 277 757	723	(-385)	(-53)
2009-2011	(0.002)	93 263	1 294 433	933	(-29)	(-3)
USA SuperPUMA						
All Migration						
2006-2011	(-0.006)	23 696	385 768	237	(24)	(10)
2006-2008	(-0.011)	17 958	381 686	180	(42)	(23)
2009-2011	(-0.008)	29 420	389 840	294	(31)	(10)
Only US Citizens' Migration						
2006-2011	-0.007	23 696	385 768	237	27	11
2006-2008	-0.013	17 958	381 686	180	50	28
2009-2011	(-0.009)	29 420	389 840	294	(34)	(11)

Note: Values in brackets are not within significance level of $p < 0.1$.

Source: European Labour Force Survey, American Community Survey.

Table A4: Simulated non-employment adjustment due to migration (based on FE models)

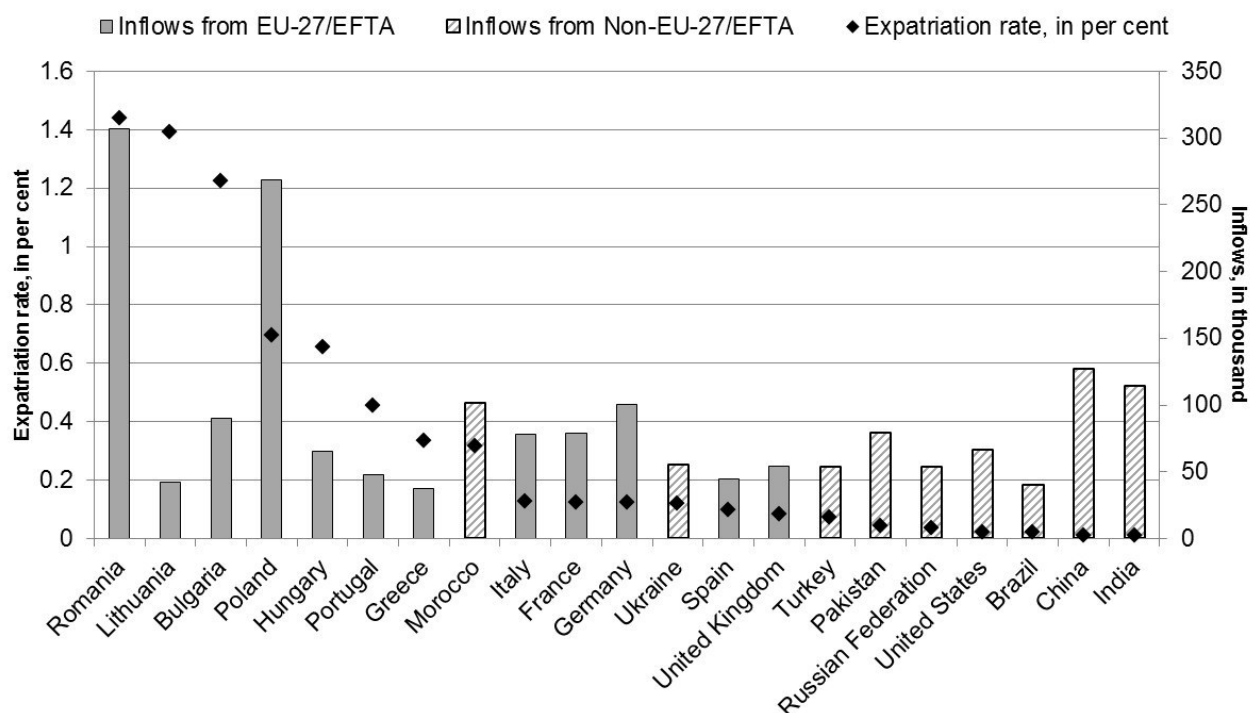
	Coeff.	Average Number of Non-employed	Average Population	1 Percent Change in Non- employment	Migration- Induced Population Change	Non- employment Adjustment due to Migration (%)
Larger Regions						
EU-27/EFTA NUTS-1						
All Migration						
2005-2011	-0.092	1 200 046	3 409 413	12 000	3 152	26
2005-2007	-0.070	1 171 137	3 369 941	11 711	2 355	20
2008-2011	-0.135	1 228 557	3 448 342	12 286	4 668	38
Only EU Citizens' Migration						
2005-2011	-0.034	1 200 046	3 409 413	12 000	1 160	10
2005-2007	(0.057)	1 171 137	3 369 941	11 711	(-1 923)	(-16)
2008-2011	-0.081	1 228 557	3 448 342	12 286	2 795	23
Eurozone NUTS-1						
All Migration						
2005-2011	(-0.022)	489 122	2 232 272	4 891	(499)	(10)
2005-2007	(0.013)	466 720	2 194 048	4 667	(-296)	(-6)
2008-2011	(-0.024)	511 043	2 269 876	5 110	(541)	(11)
Only Eurozone Citizens' Migration						
2005-2011	0.021	489 122	2 232 272	4 891	-462	-9
2005-2007	0.110	466 720	2 194 048	4 667	- 2 421	-52
2008-2011	(-0.005)	511 043	2 269 876	5 110	(113)	(2)
USA States						
All Migration						
2005-2011	-0.077	1 358 869	4 034 056	13 589	3,095	23
2005-2007	(-0.065)	1 278 766	4 000 513	12 788	(2 590)	(20)
2008-2011	(-0.052)	1 438 448	4 067 379	14 384	(2 096)	(15)
Only US Citizens' Migration						
2005-2011	-0.076	1 358 869	4 034 056	13 589	3,054	22
2005-2007	(-0.058)	1 278 766	4 000 513	12 788	(2 340)	(18)
2008-2011	(-0.073)	1 438 448	4 067 379	14 384	(2 989)	(21)
Smaller Regions						
EU-27/EFTA NUTS-2						
All Migration						
2005-2011	-0.087	434 882	1 232 524	4 349	1,073	25
2005-2007	(-0.042)	428 645	1 229 990	4 286	(514)	(12)
2008-2011	-0.130	441 080	1 235 043	4 411	1 603	36
Only EU Citizens' Migration						
2005-2011	-0.029	434 882	1 232 524	4 349	362	8
2005-2007	(0.031)	428 645	1 229 990	4 286	(-384)	(-9)
2008-2011	-0.062	441 080	1 235 043	4 411	768	17
Eurozone NUTS-2						
All Migration						
2005-2011	-0.099	455 182	1 288 881	4 552	1 282	28
2005-2007	(-0.060)	445 437	1 279 495	4 454	(764)	(17)
2008-2011	-0.154	464 986	1 298 304	4 650	2 003	43
Only Eurozone Citizens' Migration						
2005-2011	(-0.016)	455 182	1 288 881	4 552	(200)	(4)
2005-2007	(0.078)	445 437	1 279 495	4 454	(-1 001)	(-22)
2008-2011	(-0.055)	464 986	1 298 304	4 650	(714)	(15)
USA SuperPUMA						
All Migration						
2005-2011	-0.087	129 874	385 768	1 299	335	26
2005-2007	-0.135	121 917	381 686	1 219	516	42
2008-2011	(-0.030)	137 811	389 840	1 378	(116)	(8)
Only US Citizens' Migration						
2005-2011	-0.087	129 874	385 768	1 299	335	26
2005-2007	-0.145	121 917	381 686	1 219	554	45
2008-2011	(-0.023)	137 811	389 840	1 378	(89)	(6)

Note: Values in brackets are not within significance level of $p < 0.1$.

Source: European Labour Force Survey, American Community Survey.

ANNEX 3: MAIN ORIGIN COUNTRIES

Figure A1: Main origin countries of emigration to (other) EU-27/EFTA ⁽¹⁾ countries in 2011, by nationality



Source: OECD Secretariat calculations on the basis of the OECD International Migration Database, OECD Population Database and WDI World Bank.

Note: (1) Countries include all European OECD countries plus Lithuania and Latvia.

Working Paper Series in Economics

(recent issues)

- No.330: *T. Addison, McKinley L. Blackburn and Chad D. Cotti*: On the Robustness of Minimum Wage Effects: Geographically-Disparate Trends and Job Growth Equations, September 2014
- No.329: *Joachim Möller and Marcus Zierer*: The Impact of the German Autobahn Net on Regional Labor Market Performance: A Study using Historical Instrument Variables, November 2014
- No.328: *Ahmed Fayez Abdelgouad, Christian Pfeifer and John P. Weche Gelübcke*: Ownership Structure and Firm Performance in the Egyptian Manufacturing Sector, September 2014
- No.327: *Stephan Humpert*: Working time, satisfaction and work life balance: A European perspective. September 2014
- No.326: *Arnd Kölling*: Labor Demand and Unequal Payment: Does Wage Inequality matter? Analyzing the Influence of Intra-firm Wage Dispersion on Labor Demand with German Employer-Employee Data, November 2014
- No.325: *Horst Raff and Natalia Trofimenko*: World Market Access of Emerging-Market Firms: The Role of Foreign Ownership and Access to External Finance, November 2014
- No.324: *Boris Hirsch, Michael Oberfichtner and Claus Schnabel*: The levelling effect of product market competition on gender wage discrimination, September 2014
- No.323: *Jürgen Bitzer, Erkan Gören and Sanne Hiller*: International Knowledge Spillovers: The Benefits from Employing Immigrants, November 2014
- No.322: *Michael Gold*: Kosten eines Tarifabschlusses: Verschiedene Perspektiven der Bewertung, November 2014
- No.321: *Gesine Stephan und Sven Uthmann*: Wann wird negative Reziprozität am Arbeitsplatz akzeptiert? Eine quasi-experimentelle Untersuchung, November 2014
- No.320: *Lutz Bellmann, Hans-Dieter Gerner and Christian Hohendanner*: Fixed-term contracts and dismissal protection. Evidence from a policy reform in Germany, November 2014
- No.319: *Knut Gerlach, Olaf Hübler und Wolfgang Meyer*: Betriebliche Suche und Besetzung von Arbeitsplätzen für qualifizierte Tätigkeiten in Niedersachsen - Gibt es Defizite an geeigneten Bewerbern?, Oktober 2014
- No.318: *Sebastian Fischer, Inna Petrunyk, Christian Pfeifer and Anita Wiemer*: Before-after differences in labor market outcomes for participants in medical rehabilitation in Germany, December 2014
- No.317: *Annika Pape und Thomas Wein*: Der deutsche Taximarkt - das letzte (Kollektiv-) Monopol im Sturm der „neuen Zeit“, November 2014
- No.316: *Nils Braakmann and John Wildman*: Reconsidering the impact of family size on labour supply: The twin-problems of the twin-birth instrument, November 2014
- No.315: *Markus Groth and Jörg Cortekar*: Climate change adaptation strategies within the framework of the German “Energiewende” – Is there a need for government interventions and legal obligations?, November 2014

- No.314: *Ahmed Fayez Abdelgouad*: Labor Law Reforms and Labor Market Performance in Egypt, October 2014
- No.313: *Joachim Wagner*: Still different after all these years. Extensive and intensive margins of exports in East and West German manufacturing enterprises, October 2014
- No.312: *Joachim Wagner*: A note on the granular nature of imports in German manufacturing industries, October 2014
- No.311: *Nikolai Hoberg and Stefan Baumgärtner*: Value pluralism, trade-offs and efficiencies, October 2014
- No.310: *Joachim Wagner*: Exports, R&D and Productivity: A test of the Bustos-model with enterprise data from France, Italy and Spain, October 2014
- No.309: *Thomas Wein*: Preventing Margin Squeeze: An Unsolvable Puzzle for Competition Policy? The Case of the German Gasoline Market, September 2014
- No.308: *Joachim Wagner*: Firm age and the margins of international trade: Comparable evidence from five European countries, September 2014
- No.307: *John P. Weche Gelübcke*: Auslandskontrollierte Industrie- und Dienstleistungsunternehmen in Niedersachsen: Performancedifferentiale und Dynamik in Krisenzeiten, August 2014
- No.306: *Joachim Wagner*: New Data from Official Statistics for Imports and Exports of Goods by German Enterprises, August 2014
- No.305: *Joachim Wagner*: A note on firm age and the margins of imports: First evidence from Germany, August 2014
- No.304: *Jessica Ingenillem, Joachim Merz and Stefan Baumgärtner*: Determinants and interactions of sustainability and risk management of commercial cattle farmers in Namibia, July 2014
- No.303: *Joachim Wagner*: A note on firm age and the margins of exports: First evidence from Germany, July 2014
- No.302: *Joachim Wagner*: A note on quality of a firm's exports and distance to destination countries: First evidence from Germany, July 2014
- No.301: *Ahmed Fayez Abdelgouad*: Determinants of Using Fixed-term Contracts in the Egyptian Labor Market: Empirical Evidence from Manufacturing Firms Using World Bank Firm-Level Data for Egypt, July 2014
- No.300: *Annika Pape*: Liability Rule Failures? Evidence from German Court Decisions, May 2014
- No.299: *Annika Pape*: Law versus Economics? How should insurance intermediaries influence the insurance demand decision, June 2013
- No.298: *Joachim Wagner*: Extensive Margins of Imports and Profitability: First Evidence for Manufacturing Enterprises in Germany, May 2014 [published in: *Economics Bulletin* 34 (2014), 3, 1669-1678]
- No.297: *Joachim Wagner*: Is Export Diversification good for Profitability? First Evidence for Manufacturing Enterprises in Germany, March 2014 [published in: *Applied Economics* 46 (2014), 33, 4083-4090]
- No.296: *Joachim Wagner*: Exports and Firm Profitability: Quality matters!, March 2014 [published in: *Economics Bulletin* 34 (2014), 3, 1644-1652]

- No.295: *Joachim Wagner*: What makes a high-quality exporter? Evidence from Germany, March 2014 [published in: *Economics Bulletin* 34 (2014), 2, 865-874]
- No.294: *Joachim Wagner*: Credit constraints and margins of import: First evidence for German manufacturing enterprises, February 2014 [published in: *Applied Economics* 47 (2015), 5, 415-430]
- No.293: *Dirk Oberschachtsiek*: Waiting to start a business venture. Empirical evidence on the determinants., February 2014
- No.292: *Joachim Wagner*: Low-productive exporters are high-quality exporters. Evidence from Germany, February 2014 [published in: *Economics Bulletin* 34 (2014), 2, 745-756]
- No.291: *Institut für Volkswirtschaftslehre*: Forschungsbericht 2013, Januar 2014
- No.290: *Stefan Baumgärtner, Moritz A. Drupp und Martin F. Quaas*: Subsistence and substitutability in consumer preferences, December 2013
- No.289: *Dirk Oberschachtsiek*: Human Capital Diversity and Entrepreneurship. Results from the regional individual skill dispersion nexus on self-employment activity., December 2013
- No.288: *Joachim Wagner and John P. Weche Gelübcke*: Risk or Resilience? The Role of Trade Integration and Foreign Ownership for the Survival of German Enterprises during the Crisis 2008-2010, December 2013 published in: [*Jahrbücher für Nationalökonomie und Statistik* 234 (2014), 6, 758-774]
- No.287: *Joachim Wagner*: Credit constraints and exports: A survey of empirical studies using firm level data, December 2013
- No.286: *Toufic M. El Masri*: Competition through Cooperation? The Case of the German Postal Market, October 2013
- No.285: *Toufic M. El Masri*: Are New German Postal Providers Successful? Empirical Evidence Based on Unique Survey Data, October 2013
- No.284: *Andree Ehlert, Dirk Oberschachtsiek, and Stefan Prawda*: Cost Containment and Managed Care: Evidence from German Macro Data, October 2013
- No.283: *Joachim Wagner and John P. Weche Gelübcke*: Credit Constraints, Foreign Ownership, and Foreign Takeovers in Germany, September 2013
- No.282: *Joachim Wagner*: Extensive margins of imports in The Great Import Recovery in Germany, 2009/2010, September 2013 [published in: *Economics Bulletin* 33 (2013), 4, 2732-2743]
- No.281: *Stefan Baumgärtner, Alexandra M. Klein, Denise Thiel, and Klara Winkler*: Ramsey discounting of ecosystem services, August 2013
- No.280: *Antonia Arsova and Deniz Dilan Karamen Örsal*: Likelihood-based panel cointegration test in the presence of a linear time trend and cross-sectional dependence, August 2013
- No.279: *Thomas Huth*: Georg von Charasoff's Theory of Value, Capital and Prices of Production, June 2013
- No.278: *Yama Temouri and Joachim Wagner*: Do outliers and unobserved heterogeneity explain the exporter productivity premium? Evidence from France, Germany and the United Kingdom, June 2013 [published in: *Economics Bulletin*, 33 (2013), 3, 1931-1940]

(see www.leuphana.de/institute/ivwl/publikationen/working-papers.html for a complete list)

Leuphana Universität Lüneburg
Institut für Volkswirtschaftslehre
Postfach 2440
D-21314 Lüneburg
Tel.: ++49 4131 677 2321
email: brodt@leuphana.de

www.leuphana.de/institute/ivwl/publikationen/working-papers.html