

A SHARED VISION FOR THE LANDSCAPES OF SOUTHWESTERN ETHIOPIA

MUL'ATA WALOO TEESSUMA LAFA KIBBA LIXA ITOOPHIYAATIIF



Tolera Senbeto Jiren, David J. Abson, Maria Brueck,
Joern Fischer, Jan Hanspach

translated by Birhanu Bekele

A SHARED VISION FOR THE LANDSCAPES OF SOUTHWESTERN ETHIOPIA

MUL'ATA WALOO TEESSUMA LAFA KIBBA LIXA ITOOPHIYAATIIF

Tolera Senbeto Jiren
David J. Abson
Maria Brueck
Joern Fischer
Jan Hanspach

Translated by Birhanu Bekele



This work is distributed under the terms of the Creative Commons Attribution-Non-Commercial License (CC BY-NC), which permits unrestricted use, distribution, and reproduction in any medium, provided the original work is properly cited.

All figures are works by the authors, except where indicated otherwise.

Direct all inquiries to:

Joern Fischer

Leuphana University Lueneburg

Universitaetsallee 1, 21335 Lueneburg, Germany

Email: joern.fischer@leuphana.de



LEUPHANA
UNIVERSITÄT LÜNEBURG

Hojiin kun kan raabsamu seera Hayyama Daldalaa Hin Taanen ‘Creative Commons Attribution (CC BY-NC)’tiin yommuu ta’u, kana jechuun hanga beekamtiin ykn abbummaan qajeelfama kanaa eerametti (Maqaan barreesitootaa sirnaan caqasametti) ittii fayyadamuun, raabsuun fi baay’isuun daangaa malee kan heyyemameedha.

Lakkoofsi hundi hojii barreessitootaati, bakka akka biraatti ibsame malee.

Gaaffii hunda gara:

Joern Fischer

Leuphana University Lueneburg

Universitaetsallee 1, 21335 Lueneburg, Germany

Email: joern.fischer@leuphana.de

© April 2023

ISBN 978-619-248-106-3

Pensoft Publishers

12, Prof. Georgi Zlatarski Str. 12

1111 Sofia, Bulgaria

www.pensoft.net

Table of contents

ACKNOWLEDGEMENTS	7
CHAPTER 1: Introduction	10
CHAPTER 2: Scenarios of the future landscape in Jimma zone	16
CHAPTER 3: Developing a shared vision for a desired future.....	26
CHAPTER 4: A shared landscape vision	30
Principle 1: Strategic land use planning and enforcement	34
Principle 2: Environmental conservation and a biosphere reserve	40
Principle 3: Agricultural development and food security.....	48
Principle 4: Restoration of degraded land	56
Principle 5: Heritage preservation and development of the bioeconomy	62
Principle 6: Collaborative governance and institutions.....	68
Principle 7: Improved land tenure security	76
Principle 8: Infrastructure and technology development.....	82
Principle 9: Raising community awareness and engagement.....	88
Principle 10: Social and ecological transformation	96
CHAPTER 5: Synthesis	102
LIST OF WORKSHOP PARTICIPANTS	107
REFERENCES	115

Qabiyyee

GALATA	7
BOQONNAA 1: Seensa	10
BOQONNAA 2: Haalota egeree teessuma lafa godina Jimmaa	16
BOQONNAA 3: Adeemsa mul'ata waloo waa`ee egeree kibba lixa Itophiyaatif filatamaa tahe qopheessuu	26
BOQONNAA 4: Mul'ata waloo waa`ee egeree haala teessuma lafa naannoo	30
Qajeelfama 1: Tarsiimoo karoora fi raawwii itti fayyadama lafaa	34
Qajeelfama 2: Eegumsa naannoo fi kuusaa lubbu qabeeyyii daangeffamanii itti kunuunsifaman	40
Qajeelfama 3: Misooma qonnaa fi wabii midhaan nyaataa	48
Qajeelfama 4: Lafa manca'e deebisanii gabbisuu	56
Qajeelfama 5: Kuusaa hambaalee fi guddina diinagdee uumama irratti hundaa`e	62
Qajeelfama 6: Bulchiinsa hirmaachisaa fi dhaabbileewwan	68
Qajeelfama 7: Wabii abbaa qabeenyummaa lafaa fooyya`e	76
Qajeelfama 8: Bu`uraalee misoomaa fi teeknoolojii guddisuu	82
Qajeelfama 9: Hubannoo fi hirmaannaa hawaasaa guddisuu	88
Qajeelfama 10: Jijjiirama Hawaas-naannoo	96
BOQONNAA 5: Waliitti dhufeenya/Wal-nyaatinsa	102
TARREE HIRMAATTOTA MARI	107
WABIWWAN	115

Acknowledgements / Galata

We thank all local people in Jimma zone for hosting and welcoming us, and all stakeholders who actively engaged in all rounds of stakeholder workshops throughout the landscape visioning process. Without these contributions this work would not have been possible. We thank the Administration Offices and administrators (Bulchiinsaa fi Bulchitoota), Peace and Security Administration Offices and leaders (Wajjira Bulchiinsaa fi Nageenya fi hoggantoota), and all Sector Offices and their respective leaders (Wajjiraalee Seektaraa fi dura bu'oota isaanii) in all kebeles, woredas, and the zone for granting us permission to carry out the visioning exercises, and for helping facilitate the workshops, including the arrangement of venues and catering services. We thank the Oromia Regional Administration office, and Bureau of Agriculture and Natural Resources, and the government of Ethiopia for providing permission to conduct this study.

Namoota naannoo kan godina Jimmaa keessa jiran hunda kan nu keessummeessanii fi nu simatan ni galateeffanna, akkasumas qooda fudhattoota hunda kan waltajjii waa'ee mul'ata waayee egeree haala teessuma lafaa irratti adeemsifame ture keessatti marsaa hunda irratti dammaqinaan hirmaatan hunda ni galateeffanna. Gumaacha isaan godhaniin malee hojii kana galmaan ga'uun hin danda'amu ture. Wajjira Bulchiinsaa fi hoggantoota wajjirichaa sadarkaa gandaa hanga biyyaalessaatti jiraniif, Wajjira Bulchiinsaf Nageenyaa fi hooggantoota wajjirichaa wajjirichaa sadarkaa gandaa hanga biyyaalessaatti jiraniif, akkasumas Wajjira Seektara hundaafi hoggantoota isaanii gandoota hundaa, aanaa fi godina hunda keessaa kan yaalii hojii mul'ata waayee egeree haala teessuma lafaa akka hojjennuuf hayyama nuuf laatan ni galateeffanna. Akkasumas qophii iddoo waltajjii marii mijeessuu, iddoo fi tajaajila nyaataa kan nuuf mijeessanif ni galateeffanna. Wajjira Bulchiinsa Naannoo Oromiyaa, fi Biiroo Qonnaa fi Qabeenya Uumamaa, akkasumas mootummaan Itoophiyaa qorannoo kana gaggeesuuf hayyama nuuf kennaniif ni galateeffanna.

We especially want to thank Mr. Birhanu Bekele for translating the English version of this booklet into Oromo. We also thank Mr. Tsedeke Eticha, Mr. Tijani A/Nura, Mr. Sado Musa, Mr. Mohammedzeyin A/Sambi, Mr. Fikru Kebede, Mr. Asmamaw Deffar, Mr. Shibiru Gedafa, Mr. Lemessa Yadeta, Mr. Belay Nigussie, Mrs. Hawa Seid, Mrs. Ramla Nasir, and Mr. Seifu Harun for their support in organizing the meetings and workshops. A special thanks goes to Mrs. Elissa Dietrichs, Mr. Dadi Feyisa, Mr. Birhanu Bekele, Mr. Fekadu, and Dr. Fekadu M. Abdissa for their help for convening the workshops. We would also like to thank Prof. Kristoffer Hylander and his group, as well as all other researchers we previously worked with in southwestern Ethiopia – especially Mr. Dula W. Duguma, Dr. Elizabeth Law, Dr. Jannik Schultner, Prof. Feyera Senbeta, and Prof. Sileshi Nemomissa. The particular research reported here was funded through a grant by the German Ministry for Education and Research (BMBF)

to Prof. Joern Fischer, Prof. David J. Abson and Dr. Jannik Schultner. Finally, we are grateful to Leuphana University of Lueneburg and the various other collaborators who assisted us in our work in southwestern Ethiopia in different capacities.

Keessattuu Obbo Birhaanuu Baqqalaa kitaaba xiqqaa kana Afaan Ingiliffaa irraa gara Afaan Oromootti waan hiikaniif galateeffachuu barbaanna. Akkasumas barsiisaa Daadhii Fayyisaa adeemsa waltajjii marii gaggeessuu keessatti gargaarsa cimaa nuuf taasisaniif addatti galateeffachuu barbaanna. Dabalataanis Obbo Tsaddaqa Itichaa, Obbo Tijjaanii A/Nuura, Obbo Saadoo Muusaa, Obbo Mohammedzeyin A/Sambii, Obbo Fiqiruu Kabbadaa, Obbo Asmaamaaw Daffaar, Obbo Shibbiruu Gadafaa, Obbo Lemeessaa Yaadataa, Obbo Balaay Nugusee, Aadde Hawwaa Sayid, Aadde Ramlaa Naasir fi Obbo Seefuu Haarun walgahii fi marii qopheessuu keessatti deeggarsa taasisaniif akkasuma ni galateeffanna. Aadde Elissa Dietrichs, Obbo Daadhii Fayyisaa, Obbo Birhaanuu Baqqalaa, Obbo Fiqaaduu Abarraa fi Dr. Fekadu Mitikkuu gargaarsa waltajjii marii waamuuf nuuf mijeessaniif galata addaa qabna. Akkasumas Prof. Kristoffer Hylander fi garee isaa, akkasumas qorattoota biroo kanaan dura kibba lixa Itoophiyaa keessatti waliin hojjenne hunda – keessattuu Obbo Duulaa W. Dhugumaa, Dr. Elizabeth Law, Dr. Jannik Schultner, Prof. Fayyeeraa Sambataa fi Prof. Silashii Namoomsaa galateeffachuu barbaanna. Qorannoon addaa asitti gabaafame kun deeggarsa maallaqaan Ministeerri Barnootaa fi Qorannoo Jarmanii (MBQJ) irraa Prof. Joern Fischer, Prof. David J. Abson fi Dr. Jannik Schultner'f kennameen kan hojjetameedha. Dhumarratti, Yuunivarsiitii Leuphana Lueneburg fi qooda fudhattoota adda addaa kanneen biroo kibba lixa Itoophiyaa keessatti hojii keenya sadarkaa adda addaatiin nu gargaaran hundaaf galata guddaa qabna.



CHAPTER 1

Introduction

BOQONNAA 1

Seensa



Introduction / Seensa

The natural environment of Jimma zone as well as its social and political systems have changed considerably over the last two or three decades. For instance, from narratives by local elders, religious leaders, and Abba Gadaa, we know that forest cover, types of crops, agricultural practices, the strength of local traditional organizations and social cohesion, gender relations and girls' education, as well as the political administration all changed in the last decades. These changes in the landscape also led to changes in the livelihoods of local people. Similarly to how these past natural processes and human interventions influenced the present landscape, processes and interventions in the present will shape the future of the landscape.

Haalli uumama naannoo godina Jimmaa akkasumas sirni hawaasummaa fi siyaasaa isaa waggoota kurnan lamaa fi sadan darban keessatti jijjiirama guddaa argisiisanii-ru. Fakkeenyaaf, akka yaada jaarsolii naannoo, abbootii amantii fi Abbaa Gadaa irraa argannetti, uwwisni bosonaa, gosootni midhaanii, malli qonnaa, ciminni jaar-miyaa-lee aadaa naannoo fi walitti dhufeenyi hawaasummaa, hariiroon koorniyaa fi haalli barnoota shamarranii, akkasumas haalli bulchiinsi siyaasaa hundi waggoota kurnan darban keessatti jijjiiramaniiru. Jijjiiramni haala teessuma lafaa keessatti uumaman kunniin haala jireenya namoota naannoo irrattis jijjiirama fideera. Haaluma walfakkaatuun adeemsi uumamaan naannoo jijjiiraa turanii fi dhiibban dhala namaa kanaan dura ture haalota teessuma lafaa keessa amma jiru kana uume, adeemsi fi dhiibban amma jirummoo haalota teessuma lafaa kan gara fuulduraa uumuu danda'a.

In any landscape, the future is shaped by both natural processes and intentional human interventions that seek to achieve specific societal goals. On the one hand, human interventions can produce positive outcomes for both the natural environment and society, for example through the expansion of public infrastructures and rural technologies. On the other hand, human interventions can also cause undesirable changes in the future, especially when they are uncoordinated. For example, it is common to hear in Jimma zone that deforestation, land and soil degradation, and conflicts between wildlife and farmers are the result of intensive food crop production enforced by the government over the last 20 years in order to boost food availability. Similarly, over the same time period, informal social safety nets and collaborative work arrangements have been gradually replaced by formal networks.

Teessumaa lafa kamiyyuu keessatti, egereen adeemsa uumamaa fi dhiibbaa dhala namaatin kan fedhii hawaasaa adda ta'e galmaan ga'uuf barbaadaniin uumama. Gama tokkoon, dhiibban dhalli namaa geessisu naannoo uumamaa fi hawaasumaaf bu'aa gaarii argamsiisuu danda'a, fakkeenyaaf bu'uuraalee misoomaa mootummaa fi baadiyyaa teeknooloojiiwwan babal'isuu danda'a. Gama biraatiin, dhiibban dhala namaa gara fuulduraattis jijjiirama hin barbaadamne fiduu danda'a, keessumaa yoo qindoom-

inni hin jiraanne. Fakkeenyaaf, bosona ciruun, manca'iinsi lafaa fi biyyee, fi walitti bu'iinsi bineensota bosonaa fi qonnaan bultoota gidduutti uumamuun bu'aa oomisha midhaan nyaataa cimaa tahe waggoota 20 darban keessatti mootummaan nyaatan of danda'uuf jecha oomisha midhaan nyaataa guddisuuf dirqisiise ta'uu isaa godina Jimmaa keessatti dhaga'uun waanuma barama dha. Haaluma walfakkaatuun yeroo walfakkaataa keessatti dhaabbileen hawaasummaa al-seerummaa dhufuu fi qophiin hojii waloo kanaaf taasifame suuta suutaan marsariitii idileetiin bakka bu'eera.

Looking at the rapid changes that occurred in the past both in the natural environment and within social systems, it is common for people to wonder how the landscape might develop in the future. How will farming practices and the social and political landscape develop over the coming 20 years within Jimma zone? What will happen to food security? How will forests, wildlife, and biodiversity in general develop?

Jijjiiramoota ariifataa naannoo uumamaa fi sirna hawaasummaa keessatti yeroo darbe uumame yoo ilaalle, namoonni gara fuulduraatti teessumni lafaa akkamitti guddachuu danda'a jedhanii yaaduun waanuma baratame dha. Malli qonnaa fi haalli hawaasummaa fi siyaasaa waggoota 20 dhufan keessatti godina Jimmaa keessatti akkamiitti guddata? Wabii nyaataa irratti maaltu ta'uu danda'a? Bosonni, bineensonni bosonaa fi heddummina lubbu qabeeyyii walumaa galatti akkamitti guddatu?

Current interventions undertaken in the landscape will inevitably shape its future. To shape the future of the landscape in a way that benefits social and ecological systems, both for current and future generations, it is vital that all stakeholders in the landscape (local people, experts, government and non-government organizations, policy makers, and researchers) proactively engage in planning and creating a desirable landscape. From existing traditional and scientific knowledge, we know that changes in the future are difficult to predict accurately. But despite such uncertainty, for landscapes such as those in Jimma zone, which are undergoing rapid changes, assessment of plausible developments in the future, and collective visioning of what is considered desirable is essential. In light of this, together with local people and organizations, we carried out a series of participatory workshops for the landscapes within Jimma zone over the last eight years. The workshops aimed to identify plausible development trajectories for the future of the landscape, and to jointly develop a landscape vision for a desirable future, where social and ecological systems and their benefits are balanced and shared equitably.

Dhiibban amma lafarratti raawwatamu egeree isaa murteessun waan hin oolle. Egeree teessuma lafaa haala sirna hawaasummaa fi naannoo (ecology), dhaloota ammaa fi fuulduraatiif fayyadu uumuf, qooda fudhattoonni teessuma lafa kanaa hundi (namoonni naannoo, ogeeyyiin, dhaabbileen mootummaa fi miti mootummaa, qaamni seera baasu fi qorattoonni) karoora baasuu fi lafa barbaadamu uumuu irratti dursanii irratti hojjechuu qabu. Beekumsa aadaa fi saayinsiin jiru irraatti hundaa'un gara fuulduraatti jijjiirama dhufu sirritti tilmaamuun akka ulfaatuu ni beekna. Garuu mirkanaa'uu dhabuun

gara fuulduraa jiraatus, teessuma lafaa kanneen akka godina Jimmaa kanneen jijjiirama ariifataa keessa jiraniif, gara fuulduraatti guddina amansiisaa madaaluudhaan waan ni barbaadama jedhamee amaname irratti mul'ata waloo qabaaachun barbaachisaa dha. Kana ilaalchisee, namoota naannoo fi jaarmiyaalee waliin ta'uun waggoota saddeet darban keessatti teessuma lafa godina Jimmaa keessa jiruuf marii(workshop) hirmaachisaa ta'e walduraa duubaan gaggeessineerra. Mariin (workshops) kunniin tarkaanfiiwwan misoomaa amansiisaa ta'an egeree teessuma lafatiif ta'uu danda'an adda baasuu, akkasumas mul'ata waloo egeree teessuma lafaa mijeessan uumuudhaan sirni hawaasummaa fi naannoo (ecology) akkasuma faayidaan madaalawaa waloo isaan qabaniif fi qoodinsa walqixa ta'e qopheessuu kan kaayyeffate ture.



First, between 2015 and 2019, we conducted multiple rounds of participatory stakeholder workshops to identify scenarios that plausibly narrate how the landscape *might develop* in the future. This is technically known as “participatory scenario planning”. As a result, this participatory scenario planning exercise created four plausible narratives of how local landscapes might change by 2040. These scenarios provide insights into what *might* happen in the landscape by 2040, but do not necessarily imply that any of the scenarios is especially desirable. However, collectively identifying how we wish the landscape to develop is essential in bringing about transformative change. Envisioning a desirable future landscape in order to then devise and implement strategies to transition to that desired future is crucial. A desirable future might correspond to one of the four scenarios previously developed, it might integrate diverse features from different scenarios, or it could be completely different. Building on our earlier scenario workshops, in 2021 and 2022, we conducted a series of workshops with stakeholders in Jimma zone to collectively envision a desirable future landscape for the year 2040. Our workshops included defining the features of the desirable future landscape as well as identifying key transformative strategies that are needed to reach such an ideal future.

Tokkoffaa, bara 2015 fi 2019 gidduutti akkaataa haalotni teessumni lafaa gara fuulduraatti bifa amansiisaa ta'een itti guddachuu danda'u adda baasuf qooda fudhattoota adda addaa waliin yeroo heddu marii gaggeessineerra. Kunis akka hubannootti “karoora hirmaachisaa gara fuulduraa” jedhamuun beekama. Kanarraa kan ka'e, shaakalliin karoora hirmaachisaa gara fuulduraa kun akkaataa teessumni lafaa naannoo keessatti haga bara 2040tti jijjiiramuu danda'u jedhaman seeneffama amansiisaa afur uumeera. Seeneffamoonni kunniin bara 2040tti teessuma lafaa keessatti maaltu ta'uu akka danda'u hubannoo kan kennan yoo ta'u, kamiin isaaniyyuu addatti kan barbaadamu ta'uu kan agarsiisan miti. Haa ta'u malee, jijjiirama jijjiirama fiduu keessatti akkaataa teessumni lafaa hawwinu itti guddachuu waliin adda baasuun barbaachisaa dha. Sana booda tooftalee gara egeree barbaadamu sanaatti ce'uuf gargaaran baasuu fi hojjiirra oolchuuf haala egeree barbaadamu tilmaamuun murteessaadha. Fuuldurri barbaadamu tokko seenessoota (scenarios) afran kanaan dura qophaa'an keessaa tokkoon walsimuu danda'a, Innis seenessoota(scenarios) adda addaa irraa amala adda addaa walitti makuu danda'a, ykn guutummaatti adda ta'uu danda'a. Marii (workshop) seenessoota (scenarios) keenya kanaan duraa irratti hundaa'uun, bara 2021 fi 2022tti qooda fudhattoota godina Jimmaa waliin walumaa galatti haala egeree barbaadamu bara 2040 qopheessuf waltajjiwwan wal-duraa duubaan gaggeessineerra. Mariin (workshop`n) keenya amaloota lafa egeree barbaadamaa ta'e ibsuu fi tooftalee jijjiirama egeree ijoo gaarii ta'an adda baasuu barbaachisan irra ga'uu fa'a kan dabalate ture.

This booklet reports the outcomes of our efforts to identify a widely shared, common vision for the future of the landscapes within Jimma zone. The participatory scenario planning process and the four resulting scenario narratives have already been published in a bilingual booklet and a scientific paper (Fischer et al., 2018; Jiren et al., 2020b). For this reason, in this booklet, we only briefly describe the scenarios (in Chap-

ter 2), because they serve as background information to the development of the landscape vision. In Chapter 3, we then explain the collaborative process that we used to generate a widely shared landscape vision together with local stakeholders. The resulting vision consists of ten principles that collectively embody a comprehensive landscape vision. Chapter 4 then presents a detailed description of each of the ten principles. For each principle, we provide a description, describe current barriers and opportunities to its implementation, and outline key strategies needed to strengthen the principle within the context of the overall landscape vision. We also discuss the degree of stakeholders' agreement for each principle, and briefly reflect on its consistency with scientific insights, as well as possible interactions with other principles. In Chapter 5, we synthesize our findings.

Kitaabni xiqqaan kun bu'aa tattaaffii nuti bal'inaan mul'ata waloo teessuma lafa naannoo keessatti adda baasuuf taasifne kan egeree teessuma lafa godina Jimmaa keessaa gabaasa. Adeemsi karoora hirmaachisaa haalota gara fuulduraa seenessuu fi bu'aa seeneffama (scenario) isaa afran kitaaba xiqqaadhan afaan lamaan kan qophaa'e fi waraqaa qorannoo saayinsii keessattis maxxanfamaniiru (Fischer fi kkf., 2018; Jiren fi kkf., 2020b). Sababa kanaaf, kitaaba xiqqaa kana keessatti, seeneffama (snenario) (Boqonnaa 2) qofa keessatti gabaabsinee ibsina, sababiin isaas teessuma lafaa keessatti mul'ata guddisuuf akka odeeffannootti tajaajilu. Boqonnaa 3ffaa keessatti, adeemsa qooda fudhattoota naannoo waliin ta'uun teessuma lafaa keessatti mula'ata waloo bal'inaan maddisiisuudhaaf itti fayyadamne ibsina. Bu'aan Mul'ata kanaa qajeelfama bu'uuraa kudhan kan of keessaa qabu yoo ta'u, isaanis walumaagalatti mul'ata teessuma lafa bal'aa kan of keessaa qabaniidha. Boqonnaan 4 itti aansee; tokkoon tokkoon qajeelfama bu'uuraa kurnaniif ibsa bal'aa ni dhiheessa. Tokkoon tokkoon qajeelfama bu'uuraatiif ibsa kennina, sodaa yeroo ammaa fi hojiirra oolchuf carraawwan jiranis ni ibsina, akkasumas tooftaalee ijoo ta'an kan qajeelfama kana cimsuuf barbaachisan haala mul'ata teessuma lafa waliigalaa keessatti ibsina. Akkasumas akkaataa sadarkaa waliigaltee qooda fudhattootaa tokkoon tokkoo qajeelfama bu'uuraa irratti jiruu fi hubannoo saayinsii waliinis wal-simuu isaa ni mari'anna, akkasumas qajeelfama bu'uuraa biroo wajjin walitti dhufeenya qabaachuu isaas gabaabsinee ni ilaalla. Boqonnaa 5 keessatti, argannoowwan keenya walitti qabnee ilaalla.



CHAPTER 2

Scenarios of the future
landscape in Jimma zone

BOQONNAA 2

Haalota egeree teessuma
lafa godina Jimmaa



Scenarios of the future landscape in Jimma zone / Haalota egeree teessuma lafa godina Jimmaa

In this chapter, we present four scenarios that show plausible ways in which the landscapes in Jimma zone may change by 2040. These scenarios were developed in participatory workshops with local stakeholders between 2015 and 2019. The results were published as a publicly available bilingual book (Fischer et al., 2018), and as a scientific article (Jiren et al., 2020b). Here, we only provide a short summary of the scenario development process and the four scenarios themselves. The scenarios serve as background information for the landscape vision that we present in the later chapters of this booklet. Notably, all scenarios were developed with a specific focus on three woredas, namely Gera, Gumay, and Setema. However, many of the insights obtained are also likely to be relevant for other woredas within Jimma zone.

Boqonnaa kana keessatti, haalawwan egeree godina Jimmaa keessatti haga bara 2040tti ta'uu danda'an (scenarios) kan agarsiisan afur dhiheessina. Haalawwan kunneen bara 2015 hanga 2019 gidduutti qooda fudhattoota naannoo godina Jimmaa jiran waliin waltajjii hirmaachisaa ta'een kan qophaa'an yoo ta'u, bu'aan qorannoo kanaa haala kitaabaan Afaan Ingiliffaa fi Afaan Oromootiin maxxanfamee ummataaf dhiyaateera (dabalataaf: Fischer fi kkf., 2018). Akkasumas haala barreeffama saayinsaawaattis qophaayee maxxanfameera (abalataaf: Jiren fi kkf., 2020b). Asirratti nuti adeemsa qophii afaan ibsa haalawwan egeree godinichaa keessatti ta'uu danda'an yokan waayee egeree godina Jimmaa mul'isan (scenario) afran qofa gabaabsinee dhiheessina. Kanas kan goone haalawwan egeree afran kanaa (Scenarios) hubachuun mul'ata waayee egeree haala teessuma lafa godina Jimmaa kitaaba xiqqaa kana keessatti boqonnaawwan itti aananitti ibsaman sirnaan hubachuuf odeeffannoo barbaachiisaa akka ka'umsaatti gargaaru waan kennaniifi dha. Kan hubatamuu qabu, Haalonni (Scenarios) hundinuu xiyyeeffanno guddaadhan aanolee Geera, Gumaay fi Saxxammaa keessatti kan qophaa'e dha. Haa ta'u malee, hubannoon argame hedduun aanaalee biroo godina Jimmaa keessa jiraniif barbaachisaa ta'uu malu.

The development of scenarios for southwestern Ethiopia / Adeemsa qophii haala egeree kibba lixa Itoophiyaa mul'isu

In a series of workshops with local people and organizations, we explored drivers of change as well as uncertainties about the future, in order to generate plausible narratives of what the landscapes in Jimma zone might look like in 2040. We involved

members of 28 regional organizations and local community groups, representing environmental, social and economic interests in the landscape. As a first step, we asked stakeholders to list important changes in the landscape that had taken place and that might take place in the future. We then analysed possible relationships between these different changes, looking at cause-and-effect chains and potential feedbacks. This resulted in a detailed understanding of the environmental, social and economic interlinkages in Ethiopia's southwest. Although this baseline model provided a good overview of the general dynamics within the region, various types of uncertainties were also identified by the stakeholders during the workshops. Critical uncertainties identified revolved around topics such as local living conditions and traditions, land use and climate change, income and employment opportunities, as well as land use rights – for all of these, local stakeholders considered it at least partly unpredictable how exactly they would develop in the future. In a final step, we then combined our baseline model of environmental, social and economic interlinkages with these uncertainties, with a particular focus on the major uncertainty regarding to what extent food or cash crops would dominate in southwestern Ethiopia. Through further discussions with the stakeholders, these considerations led to four different stories – or scenarios – describing what the future in the landscape might look like in 2040. The resulting four scenarios are not predictions of the future, but rather a tool to think about the risks and opportunities in the context of alternative, plausible development trajectories of the landscape.

Marii waltajjii heedduu walduraa duuban namoota naannoo fi jaarmiyaalee/waajjiraalee waliin taasifneen haaloota waggoottan darbanii, haaloota jijjirama fidanii fi gara-fulduraattis jijjirama fiduu dandahanii (Drivers), fi wantootaa gara fulduraatti jijjiirama akkamii akka fiduu dandahan sirnaan hin beekamne (Uncertainties) qorachuun haalawwan egeree waayee teessuma lafaa godina Jimmaa haga bara 2040 maal fakkaachuu akka danda'an haala amansiisaa ta'een mul'isan qopheessinee senessineerra. Bakka bu'oota jaarmiyaalee/waajjiraalee 28 fi gareewwan hawaasa naannichaa kanneen seektara diinagdee, misooma qonaa, eegumsa qabeenya uumamaa fi naannoo, fi kanneen biroo keessa jiran hirmaachifneerra. Adeemsa qorannoo kanaa keessatti jalqaba, qooda fudhattoonni haala teessuma lafaa ilaalchisee jijjiiramoota Kanaan dura turanii fi kanneen gara fuulduraatti ta'uu danda'an akka tarreessan gaafanneerra. Sana booda hariiroo jijjiiramoota adda addaa kana gidduu jiraachuu malu xiinxaluun, walitti hidhamiinsa sababaaf bu'aa jijjiiramoota kanaa akkasumas yaada duub-deebii kennuu ilaalle. Kunis hariiroo haala naannoo sanaa, sirna hawaasummaa fi dinagdee kibba lixa Itiyooophiyaa irratti hubannoo bal'aa argamsiiseera. Bu'uuruma kanaan jijjiiramni waliigalaa naannicha keessatti mul'atu ilaalcha waliigalaa gaarii kan uume ta'us, jijjiiramoonni garagaraa hin beekamne yookan jijjiiramoonni ta'uu fi ta'uu dhiisuun isaanii haalan hin beekamne jiraachuu waan danda'aniif qooda fudhatoota hirmaattota waltajjichaa gaafachuun haalonni ta'uu danda'an maal maal akka ta'an waltajjiirratti marii irratti qooda fudhatootni adda baafamaniiru. Jijjiiramoonni gara fulduraatti ta'uu dandahan garuu jijjiirama akkamii fiduu akka dandahan kan tilmaamuun rakkisaa tahe hunda adda baafneerra. Isaan kunis mata dureewwan; haala jireenyaa fi duudhaa naannoo,

itti fayyadama lafaa fi jijjiirama qilleensaa, galii fi carraa hojii akkasuman mirga abbummaa itti fayyadama lafaa irratti kan hundaa'e ture – jijjiiramoonni kunneen gara kamitti yookan akkamitti akka jijjiiramuu dandahan guutummaa guututti yookan hanga tokko tilmaamuun ni ulfaata. Dhumarratti, bu'uura hubannoo waayee naannoo jalqabarratti adda baafanne kanneen akka walitti hidhamiinsa naannoo, hawaasummaa fi dinagdee fi akkasumas jijjiiramoota gara fulduraaf tilmaamuun ulfaataa tahan keessattuu kanneen gurguddo tahan kan egereen godina Jimmaa; midhaan nyaataa hanga midhaan galiitti maalfakkaachuu dandaha kan jedhu walitti qabne. Marii dabalataa qooda fudhattoota waliin taasifameen, yaadonni kun seenessa adda addaa afur ykn Haalawwan egeree haala teessuma lafaa (scenarios) bara 2040 maaltahuu dandaha kan jedhu kan muldhisin qopheessine. Kanarraa ka'uun haalawwan egeree godina Jimmaa muldhisin (scenarios) afran bu'aa kana irraa argaman kunniin tilmaama egeree osoo hin taane, egereewwan uumamuu dandahan adda addaa haala amansiisaa taheen qophessun tooftaalee sodaa fi carraa gara fulduraatti uumamuu dandahan ilaalchisee tarkaanfiwwan adda addaa fudhachuuf kan dandeessisani dha.

The current landscape and four plausible scenarios for its future / Haala teessuma lafaa amma jiruu fi haalawwan egeree godina Jimmaa muldhisin afran

The current landscape / Teessuma lafaa amma jiru

The current landscape is a biodiversity hotspot and consists of a mosaic of diversified agricultural land, pastures, and Afromontane forests (Fig. 2.1). Smallholders semi-intensively produce cereals and pulses, such as maize, sorghum and teff, as subsistence food crops; coffee, khat, and eucalyptus as cash crops; and rely on forest-based ecosystem services to support their livelihoods. In addition, some medium-scale private investors produce and export coffee. Smallholder farmers and government organizations are the dominant stakeholders in the landscape. Some smallholder farmers are seasonally food insecure, but overall farmers are better-off than in many other parts of Ethiopia. However, smallholder farmers' lives as well as the natural environment are rapidly changing.

Teessumni lafaa amma jiru bakka mijataa heddummina lubbu qabeeyyii yoo ta'u, baay'inaan kan lafa qonnaa adda addaa, lafa kaloo fi bosona 'Afromontane' kan of keessaa qabudha (Fak. 2.1). Qonnaan bultoonni lafa qonnaa xixiqqaa qaban kan midhaan biila fi dheedhii, kan akka boqqolloo, mishingaa fi xaafii midhaan nyaataa oolu oomishu; buna, jimaa fi baargamoo akka midhaan galiitti oomishu. Akkasumas tajaajila sirnakoo bosona irratti hundaa'e fayyadamuun haala jireenya isaanii deeggaru. Kana jechuunis uummata naannoo kanaaf bosonni faayidaa adda addaa kennaa jira jechuu dha. Dabalataan, invas-taroota dhuunfaa sadarkaa giddu-galeessatti ramadaman tokko tokko buna oomishanii gara biyya alaatti ergaa jiru. Naannoo kana keessatti qonnaan bultoonni lafa qonnaa xix-

iqqaa qabanii fi dhaabbileen mootummaa qooda fudhattoota adda durummaan argamani dha. Qonnaan bultoonni lafa qonnaa xixiqqaa qaban tokko tokko wabii nyaataan kan ofdandahan miti. Ta'us qonnaan bultoota kutaalee ltoophiyaa biro keessatti argamni caalaa foyyahinsa qabu. Haa ta'u malee, haalli jireenya qonnaan bultoota lafa qonnaa xixiqqaa qabanii fi qabeenyi naannoo uumamaa saffisaan jijjiiramaa jira.



Fig. 2.1. Artwork depicting a typical landscape at present. See Fig. 2.2 for scenarios of how the landscape might change by 2040. / **Fakkii. 2.1.** Hojii aartii haala teessuma lafaa yeroo ammaa agarsiisu. Fakkii. 2.2 Haalawwan afran egeree teessuma lafaa bara 2040 ta'uu dandahu agarsiisan.

Scenario 1: Gain over grain – Local cash crops

In this scenario, farmers abandon traditional mixed farming in favor of intensive cash crop production (Fig. 2.2). As a result, the landscape now consists of large plots of intensively managed coffee, interspersed with khat and tree plantations. These cash crops are sold at local, national, and global markets. Private organizations, such as local traders and exporters, are key beneficiaries due to the uneven distribution of the costs and benefits of intensified cash crop production. Despite rising incomes for farmers, their food security remains low due to reduced food crop production. Due to simplified habitats and intensive management, biodiversity has declined relative to today.

Haala 1: Midhaan irra bu'aa maallaqa dursuu – Oomisha midhaan galii/gabaa

Haala kana keessatti qonnaan bultoonni qonna walmakaa aadaa dhiisanii oomisha midhaan gabaa ciminaan oomishu (Fak. 2.2). Kanarraa kan ka'e, teessumni lafaa amma jiru kan lafa qonnaa oomisha bunaaf kan oolu fi kan, lafa oomisha caatii fi baargamoo waliin walmake dha. Oomishni midhaan galii kunniin gabaa naannootti, gabaa biyyaalessaa fi addunyaa irratti gurgurama. Sababa baasii fi bu'aan oomisha kanniin sirnaan qindaa'ee hin jirreef dhaabbileen dhuunfaa kanneen akka daldaltoota fi al-ergitootaa fayyadamtoota ijoodha. Qonnaan bulootaa waliin dabalaa jiraatus, oomishni midhaan nyaataa hir'achuu isaatiin wabii nyaataa isaanii gadi aanaa ta'ee jira. Iddoon jireenya bineensotaa waan salphatee fi eegumsi isaa cimeef hedduminni lubbu qabeeyyii har'a jiru kan durii wajjin wal bira qabamee yoo ilaalamu gadi bu'eera.

Scenario 2: Mining green gold – Coffee investors

In this scenario, communal lands and forests are transferred to domestic and foreign large-scale coffee investors for the production and export of commercial and specialized coffee (Fig. 2.2). Large amounts of forest and farmland are converted and the landscape now consists of intensively managed large-scale coffee plantations. Private coffee investors are key actors, selling coffee globally and earning foreign currency. Smallholders produce food crops in areas unsuitable for coffee plantations, including on steep hills and in homegardens, and many remain food insecure because they have little land and earn low wages. Biodiversity has declined in the farmland and forest due to the expansion of coffee plantations.

Haala 2: Warqee magariisa baasu – Abbootii qabeenyaa bunaa

Haala kana keessatti lafti waloo fi lafa bosonaa dabalatee abbootii qabeenyaa dhuunfaa biyya keessaa fi biyya alaatiif addatti buna akka oomishanii fi gabaa idil-addunyaatu erganiif dabarfamanii kennamaniiru (Fak. 2.2). Bosonni babal'aa fi lafti qonnaa gurguddaan gara lafa oomisha bunaatti kan jijjiirame yoo ta'u, dhaabbileen dhuunfaa

gurguddon lafa oomisha bunaa babal'aa fudhachuun ciminaan buna kunuunsan of keessaa qaba. Abbootiin qabeenyaa dhuunfaa qooda fudhattoota ijoo yoo ta'an, buna akka addunyaatti gurguruun sharafa biyya alaa argamsiisu. Qonnaan bultoonni lafa qonnaa xixiqqaa qaban lafa bunaaf mijataa hin taane kan akka lafa tabbaa fi naannoo oddoo manaatti midhaan nyaataa oomishu. Sababa kanaaf lafa xiqqaa fi galii xiqqaa waaan argataniif wabii midhaan nyaatatiin of hin dnda'an. Babal'ina dhaabbilee bunaa irraa kan ka'e heddummina lubbu qabeeyyii lafa qonnaa fi bosona keessatti hir'ateera.

Scenario 3: Coffee and conservation – Biosphere reserve

In this scenario, a biosphere reserve is established, and the landscape consists of a mosaic of diversified farmland and forest patches, which combines nature conservation, sustainable agriculture, ecological coffee production, and tourism opportunities (Fig. 2.2). Smallholders produce diversified food and cash crops, benefit from forest-based ecosystem services, and generate income from cultural and nature-based tourism, organic coffee exporting, and carbon trading schemes. Diverse stakeholders are present in the landscape, and, although economic growth is slow, smallholders' food security as well as biodiversity levels have improved.

Haala 3: Bunaa fi eegumsa naannoo – Lubbu qabeeyyii daangessanii tursiisuu

Akka haala kanatti egeree godina Jimmaa keessatti lafti godinichaa sadarkaa biyooles-saa fi adunyaatti lafa kunuunsa uumamaa (Biosphere reserve) tahuun addatti beekamtii argatee hundeeffama. Haaluma Kanaan, naannoon beekamtii kunuunsa uumamaa argate kun lafa qonnaa fi bosona adda addaa kan of keessaa qabu yoo ta'u, kunis kunuunsa uumamaa, qonna itti fufiinsa qabu, oomisha bunaa naannoo mala aadaan oomishamu fi carraa turiizimii kan aadaa fi daawwannaa qabeenya uumamaa adda addaa irratti hundaa'e walitti fiduudha (Fak. 2.2). Qonnaan bultoonni lafa xixiqqaa irratti midhaan nyaataa fi gabaa/galii adda addaa oomishan tajaajila sirnakoo bosona irratti hundaa'e irraa fayyadamoo ta'u; daawwannaa naannoo aadaa fi uumamaa irraas galii argatu akkasumas buna uumamaa (buna orgaanikii) alatti erguu irraa fi hariiron idil-adunyaa kan daldala kaarboonii irraayis galii argatu. Qooda fudhattoonni adda addaa teessuma lafa kanaa keessatti kan argaman yoo ta'u, guddinni diinagdee harkifataa ta'us, wabiin nyaataa qonnaan bultoota lafa qonnaa xixiqqaa qabaniif fi sadarkaan heddummina lubbu qabeeyyii fooyya'eera.

Scenario 4: Food first – Intensive farming and forest protection

In this scenario, traditional farming is replaced by industrialized agriculture involving high-yielding varieties and agrochemical inputs (Fig. 2.2). The landscape thus consists of modern agriculture, including large cereal fields on which scattered trees have been removed. The remaining patches of natural forest are now strictly protected. Model farmers

specialize in and commercialize food crop production. Private traders, input suppliers, and government organizations are key actors, and private traders tend to capture the benefits of food crop commercialization. Despite a lot of food being grown, many smallholders remain food insecure due to low dietary diversity, market price fluctuations, and occasional crop failures. Biodiversity declines due to farm expansion and agrochemical use.

Haala 4: Dursi soorata – Haalan qotuu fi eegumsa bosonaa

Haala kana keessatti qonni baratamaan mala aadaan qotamu gara qonna ammayyaa`aa kan oomisha guddaa kennuu fi fi galteewwan qonnaa keemikaalota kanneen akka xaa`oo fi farra aramaa fayyadamaniitti jijirama yokaan bakka bu`a (Fak. 2.2). Haaluma kanaan, teessumni lafaa qonnaa ammayyaa kan of keessaa qabu yoo ta`u, lafti qonnaa oomisha midhaanii kanneen akka boqqolloo, xaafii, bishingaa fi qamadiin bal`inaan kan keessatti oomishaman tahee mukkeen lafa qonnaa keessa jiran ciramanii badu. Bakkeewwan bosona uumamaa hafan eegumsa cimaa argataniiru. Qonnaan bultoonni moodeela ta`an oomisha midhaan nyaataa haala gaarii ta`een kan oomishanii fi daldalaaf dhiyeessuf adda durummaan kan milkaa`anidha. Daldaltoonni dhuunfaa, dhiyeessitoonni galteewwanii fi dhaabbileen mootummaa qooda fudhattoota ijoo yoo ta`an, daldaltoonni dhuunfaa faayidaa daldala midhaan nyaataa qabachuuf carraaqu. Midhaan nyaataa danuun oomishamus, qonnaan bultoonni lafa xixiqqaa qaban hedduun nyaata garagaraa madaalawaa tahe dhabuun, gatiin gabaa tasgabaahu dhabuun, fi darbee darbee midhaan baduu irraa kan ka`e wabii nyaataa dhabuu isaaniti. Heddummina lubbu qabeeyyii sababa babal`ina qonnaa fi itti fayyadama galtee qonnaa keemikaalaatiin hir`ata.



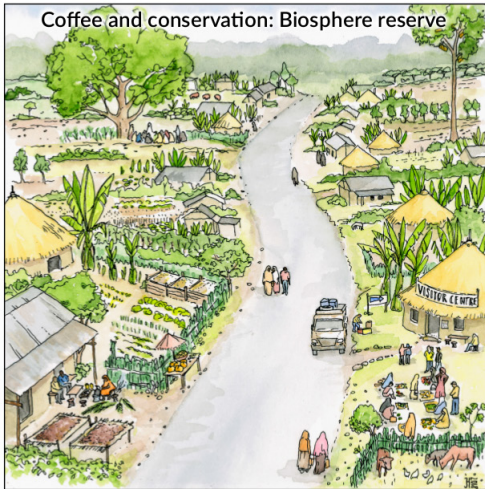
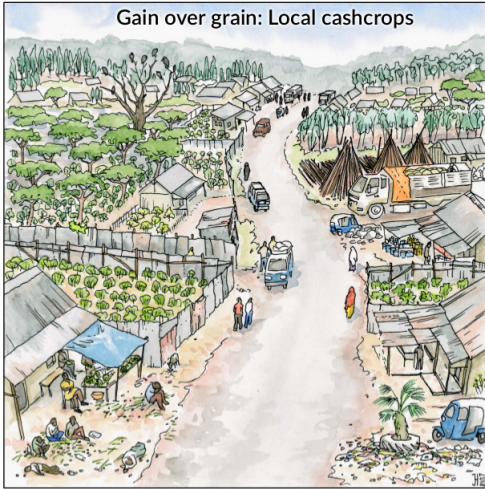


Fig. 2.2. Artwork depicting four plausible scenarios of how the current landscape might change in the future. See Fig. 2.1 for artwork showing the present landscape. / **Fak 2.2.** Hojii aartii haalawwan dhufuu danda`an afur agarsiisu yoo ta'u, gara fuulduraatti haala amma jiru akkamitti jijjiiramuu akka danda'u. Fak.2.1. Hojii aartii teessuma lafaa amma jiru agarsiisuuf.



CHAPTER 3

Developing a shared vision
for a desired future

BOQONNAA 3

Adeemsa mul'ata waloo
waa`ee egeree kibba lixa
Itophiyaatif filatamaa tahe
qopheessuu

Developing a shared vision for a desired future / Adeemsa mul'ata waloo waa`ee egeree kibba lixa Itophiyaatif filatamaa tahe qopheessuu

To generate a shared landscape vision for our study area, we conducted a series of stakeholder workshops in November and December 2021, and again in February 2022. Like before, we focused especially on Gera, Gumay and Setema woredas, but our findings are likely to also be relevant to many other woredas within Jimma zone. Because generating a shared vision requires the involvement of many different types of stakeholders, workshop participants included local people and their institutions, but also public, community-based, private, and non-governmental organizations (see “List of workshop participants” at the end of this booklet).

Haala egeree naannoo godina Jimmaa ilaalchisee egeree filatamaa ta'e adda baasnee mul'ata waloo kitaaba kana keessatti ibsaman qopheessuu keessaatti waltajjii qooda fudhattoota hirmaachisaa tahe walitti fufiinsan Adoolessaa fi Muddee 2021 akkasuma Fulbaana 2022 tti gaggeessinee turre. Akkuma kanaan duraa, keessumaa gandoota Geeraa, Gumaay fi Saxxammaa irratti xiyyeeffanne, argannoon keenya garuu aanaalee biroo godina Jimmaa keessa jiran hedduuf barbaachisaa ta`u. Mul'ata waliinii horachuuf qooda fudhattoota gosa adda addaa hedduu hirmaachisuu waan barbaaduuf, waltajjiin marii hirmaattotaa namoota naannoo fi dhaabbilee isaanii kan hammate yoo ta`u, garuu dhaabbilee mootummaa, dhaabbilee hawaasummaa irratti hundaa'an, dhaabbilee dhuunfaa fi dhaabbilee miti mootummaas kan hammataman turan (“Tarreen hirmaattotaa marii” dhuma kitaaba xiqqaa kanaa irratti argama).

The first round of participatory stakeholder workshops (hereafter “single-session workshops”) were one-day workshops in November and December 2021. With these workshops, we aimed to identify the vision for the future of the landscape held by the different stakeholders, separately at different locations and administration levels in Jimma zone. Eight single-session stakeholder workshops were conducted separately in four kebeles (Kuda Kufi, Difo Mani, Dusta Badiya, and Kaso Badeyi), three woredas (Gumay, Gera, and Setema), and at the zonal level. The four chosen kebeles differ in their dominant types of livelihood and accessibility to public infrastructure. We involved diverse stakeholders, ranging from poor local community members to policy makers at the woreda and zonal levels. After completing the eight single-session workshops, the results were compiled in a single draft vision document. We then identified areas of consensus and disagreement among participants of the eight workshops regarding the features of the desired future landscape. For example, stakeholders in Kuda Kufi kebele envisioned farmland with intensive agricultural practices, whereas stakeholders

in Kaso Badeyi kebele primarily envisioned a multi-functional landscape with low-intensity agriculture.

Waltajjiin marii kan qooda fudhattoota hirmaachisaa tahe marsaa jalqabaa (kana booda “waltajii marii qeenxee” jennee ibsina) marii guyyaa tokko fudhate yoo tahu Adoolessa fi Muddee 2021 kan gaggeeffame ture. Waltajjiin marii qeenxee kanaan, qooda fudhattotni adda addaa waa`ee egeree naannoo isaaniif mul`ata adda addaa isaan qaban adda baafachuuf karoofannee waltajjiin qooda fudhattootaa qofa qofaatti bakka adda addaa fi sadarkaa bulchiinsaa gara garaatti godina Jimmaatti gaggeessine. Haaluma kanaan waliigalatti waltajjiin marii qeenxee saddeet kan gaggeessine yemmu tahu kana keessaas afur sadarkaa gandaatti (Gandoota: Qudaa qufii, Difoo Maanii, Dustaa Baadiyyaa, fi Kasoo Badeyyii), sadii sadarkaa aanaatti (Aanaawwan: Gumay, Gera, fi Setema), fi tokko immoo sadarkaa godina irratti gaggeessineerra. Gandoonni filataman afran haala jireenya hawwaasummaa, mala jireenyaa fi itti dheeyenya bu`uuraalee misoomaa qabaniin garaagarummaa qabu. Qooda fudhattootni waltajjiin marii kana irratti hirmaatanis heeddu yoo tahan isaanis sadarkaa hawaasaa (qonnaan bultoota) irraa kaa-see hanga qaamolee mootummaa imaammata baasaniitti sadarkaa aanaalee fi godinaatti jiran hirmaachisee dha. Waltajjiin marii qeenxee saddeet erga xumuramee booda bu`aan qorannoo sanada mul`ataa wixinee tokko keessatti qindaa`eera. Sana booda hirmaattoota waltajjiin marii qeenxee saddeet gidduutti haalli filannoo waa`ee egeree naannoo isaaniif barbaachisaa tahe ilaalchisee qabxiwwan waliigaltee yookan walsi-man fi qabxiwwan walii hin galtee yookaan wal hinsimne adda baafanne. Fakkeenyaaf, qooda fudhattoonni ganda Qudaa Qufii egereen naannoo isaanii fi itti fayyadamni lafa isaanii adda durummaan gara lafa qonna hammayyaatti akka cehu yeroo fedhan, qooda fudhattoonni ganda Kasoo Badeeyyii garuu egeree naannoo kan itti fayyadama lafaa walmakaa tahe, faayidaa mara (tajaajila gosa heedduu) kan kennuu fi irra caalaan qonna keemikaalota heedduu hin fayyadamne akka tahu fedhu.

The results of the single-session workshops were used as input for a second participatory stakeholder workshop (hereafter “joint workshop”), held in Jimma town in February 2022. Representatives from each of the eight single-session workshops joined in a one-day workshop that aimed to collectively envision the future of the landscape, by noting the points of agreement, and building consensus on the points that reflected prior disagreement among workshop participants. At the end of the joint workshop, stakeholders generated a collectively agreed-upon vision for the future of their landscape. However, some issues remained controversial and showed differing opinions between some stakeholders.

Bu`aan waltajjiin marii qeenxee kunis waltajjiin qooda fudhattoota hirmaachisaa lammaffaa (kana booda “Waltajjiin marii waloo”), kan magaalaa Jimmaatti Guraandhala 2022 gaggeeffameef akka galteetti fayyadamaneerra. Bakka bu`oonni qooda fudhattotaa kanneen walgahii qeenxee saddeet irratti hirmaatan dabalataan waltajjiin marii waloo kan guyyaa tokkoof qophaahe irratti hirmaataniiru. Karoorri waltajjiin marii waloo kunis

qooda fudhattotni waayee egeree naannoo isaaniif mul'ata waloo akka uumanii fi qabataan gochuu, qabxiilee waliigaltee armaan duratti adda baafaman hubachuudhaan, fi qabxiilee waliigalteen irratti hin uumamne yokan kan wal hinsimne irratti mari'atanii waliigaltee akka uumani dha. Xumura waltajjii marii waloo kanaa irratti qooda fudhattoonni mul'ata waloo waayee egeree noonnoo teessuma lafa isaaniif qaban irratti waliigaltee uumuun qabxiwwan mul'ata waloo ibsaniiru. Haa ta'u malee dhimmoonni tokko tokko falmisiisaa ta'anii kan turan yoo ta'u, qooda fudhattoota tokko tokko gidduutti yaada adda addaa agarsiisaniiru.

The following chapter details the vision for southwestern Ethiopia generated together with local stakeholders, including areas of agreement and disagreement. We also reflect on the extent to which the vision by stakeholders is consistent with previous scientific work in southwestern Ethiopia.

Boqonnaa itti aanu keessatti mul'ata kibba lixa Itoophiyaa qooda fudhattoota naannoo waliin ta'uun adda baafame fi, qabxiwwan waliigaltee irra gahame fi waliigalteen irra hin gahamne dabalatee bal'inaan ibsameera. Mul'anni waloo kunis hojii saayinsii kanaan dura kibba lixa Itoophiyaa keessatti hojjetame waliin hangam walsimata kan jedhu irrattis ibsa kennineerra.



CHAPTER 4

A shared landscape vision

BOQONNAA 4

Mul'ata waloo waa`ee
egeree haala teessuma lafa
naannoo



A shared landscape vision / Mul'ata waloo waa`ee egeree haala teessuma lafa naannoo

This chapter presents the widely shared vision that was generated in collaborative workshops by different stakeholders at the kebele, woreda and zonal levels. The vision consists of ten principles that collectively reflect what stakeholders would like to see in their landscape in 2040. The ten principles are presented here as follows. First, we provide a detailed description of each principle. We then describe current barriers and opportunities to the implementation of each principle, as well as key strategies needed to strengthen each principle within the context of the overall landscape vision. Finally, for each principle, we also highlight the degree of stakeholders' agreement, its consistency with scientific findings from previous research, as well as interactions with other principles.

Boqonnaan kun mul'ata waloo qooda fudhattoota adda addaatin kan sadarkaa gandaa, aanaa fi godinaa irratti waltajjii marii walootin uumame fi bal'inaan fudhatama argate kan dhiyeessu dha. Mul'anni kun qajeelfamoota kudhan kan of keessaa qabu yoo ta'u, isaanis walumaagalatti qooda fudhattoonni bara 2040tti teessuma lafaa isaanii kees-satti maal arguu akka barbaadan kan calaqqisiisanii dha. Qajeelfamootni bu'uuraa akka armaan gadiitti dhiyaataniiru. Tokkoffaa, qajeelfama bu'uraa tokkoon tokkoon isaanii ilaalchisee ibsa bal'aa ni kennina. Sana booda hudhaalee fi carraawwan yeroo ammaa hojiirra oolmaa tokkoon tokkoon qajeelfamaa, akkasumas tooftaalee ijoo tokkoon tokkoon qajeelfamaa cimsuuf barbaachisan haala mul'ata waliigala teessuma lafaa kees-satti ibsina. Dhumarratti, tokkoon tokkoon qajeelfama bu'uraatif, sadarkaa waliigaltee qooda fudhattootaa, argannoo saayinsii qorannoo kanaan duraa wajjin walsimsiisuun isaa, akkasumas qajeelfama bu'uuraa biroo wajjin walitti dhufeenya qabus ni ibsina.

The ten principles of the landscape vision / Qajeelfamoota kurnan mul'ata egeree godina Jimmaa mul'isan

The ten principles identified are often closely connected to each other, and actions towards achieving one principle are likely to also effect several other principles (Fig. 4.1). As such, their order does not indicate that one is more important than another.

Qajeelfamootni kurnan adda baafaman yeroo baay'ee walitti hidhata guddaa kan qaban yoo ta'u, hojiilen qajeelfama tokko galmaan ga'uuf fudhataman qajeelfama biroo hedduu irrattis dhiibbaa uumuu ni mala (Fak. 4.1). Akka tartiiba armaan gadii kanaatti, inni tokko isa kaan caalaa barbaachisaa ta'uu isaa hin agarsiisu.

- 1 Strategic land use planning and enforcement
 - 2 Environmental conservation and a biosphere reserve
 - 3 Agricultural development and food security
 - 4 Restoration of degraded land
 - 5 Heritage preservation and development of the bioeconomy
 - 6 Collaborative governance and institutions
 - 7 Improved land tenure security
 - 8 Infrastructure and technology development
 - 9 Raising community awareness and engagement
 - 10 Enabling social and ecological transformation
-

- 1 Tarsiimoo fi raawwii karoorra itti fayyadama lafaa
- 2 Kunuunsa naannoo fi kuusaa baayoosfiraa
- 3 Misooma qonnaa fi wabii nyaataa
- 4 Lafa manca'e deebisanii gabbisuu
- 5 Kunuunsa hambaalee fi misooma dinagdee uumamarratti hundaa'e
- 6 Bulchiinsa hirmaachisaa fi dhaabbileewwan
- 7 Mirga wabii abbaa qabenyummaa lafaa fooyya'e
- 8 Misooma bu'uuraalee misoomaa fi teeknoolojii
- 9 Hubannoo fi hirmaannaa hawaasaa guddisuu
- 10 Guddina hawaas-naannoo

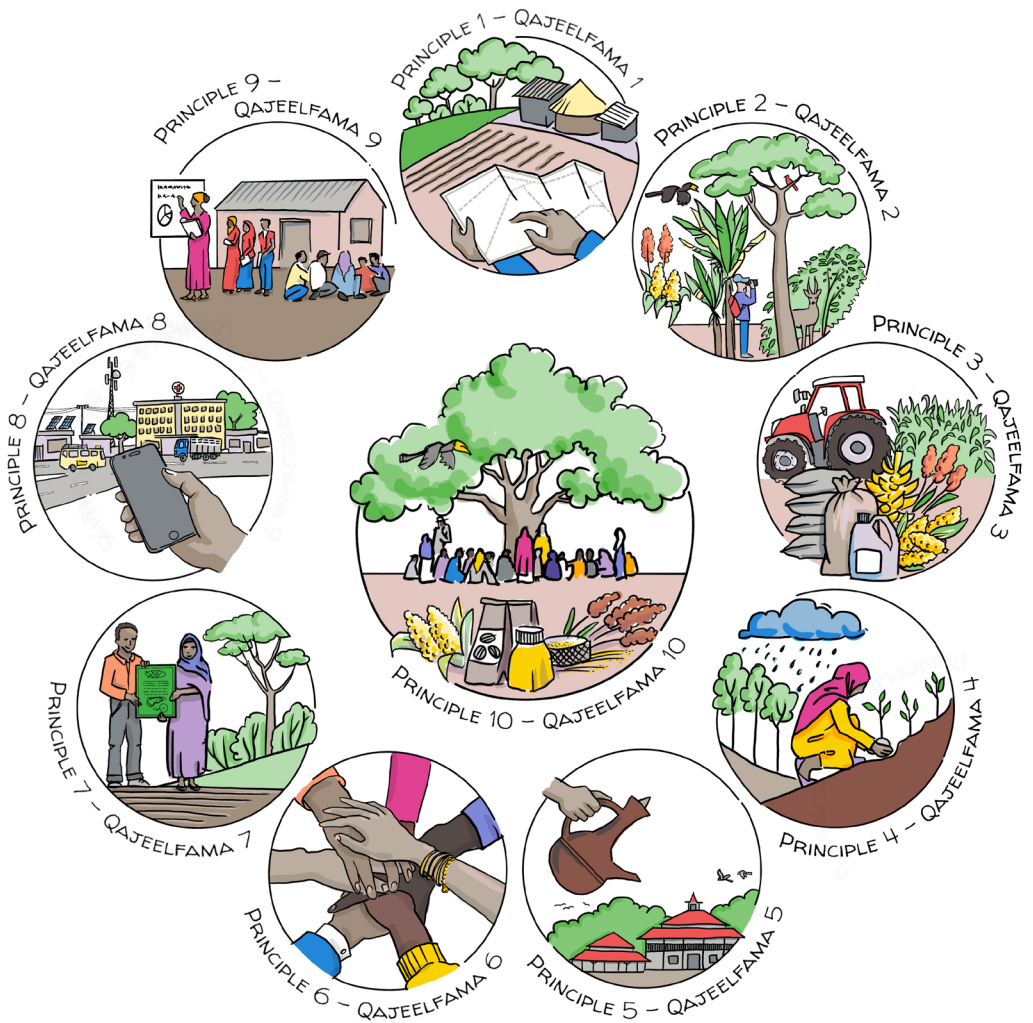


Fig. 4.1. Artistic depiction of ten interacting principles of the landscape vision for southwestern Ethiopia. / **Fak 4.1.** Mul'ata lafa kibba dhiha Itoophiyaaf qajeeltoowwan wal-qunnamtii kudhan agarsiisuu aartii.



Principle 1 / Qajeelfama 1

Strategic land use planning and enforcement

Tarsiimoo karoorra fi raawwii itti fayyadama lafaa

Summary of this component of the shared vision / Cuunfaa qajeelfamaa kan qaama mul'ata waloo kanaa

By 2040, land use planning and enforcement will be undertaken as follows:

- Strategic land use planning is carried out and enforced.
- The landscape is zoned into different land use systems and purposes.
- Investment in the land and utilization of land resources is efficient and based on land capability.
- Sustainable land management is practiced throughout the landscape.

Bara 2040tti karoorri itti fayyadama lafaa fi raawwiin isaa haala armaan gadiitin ni raawwatama:

- Karoorri itti fayyadama lafaa tarsiimawaa ta'e qophaayee hojiira oola.
- Teessumni lafaa sirna itti fayyadama lafaa fi kaayyoo adda addaatiif kan qoodame ta'a.
- Invastimantiin lafaa yookan misoomni lafaa fi itti fayyadamni qabeenya uumamaa haala qisaasa hambisuu fi kan haala qabiyye lafichaa irratti kan hundaa'eedha.
- Bulchiinsi lafaa itti fufiinsa qabu bakka hunda keessatti ni raawwatama.

Description of the principle / Ibsa qajeelfamichaa

By 2040, land use planning is undertaken and implemented throughout the landscape. Land use is guided by strategic planning that reflects the comparatively best use of land resources (soil, forest, water, minerals, topography, and other resources). Planning also considers social preferences for social, economic, and environmental goals, and the well-being of present and future generations. Based on land capability, the land use plan outlines the zoning of the landscape into different land uses. Natural forest areas are identified, demarcated, strictly protected, and collaboratively managed. As a result, wildlife, endemic tree species, and biodiversity genetic resources are protected and can increase in diversity and abundance. Forest regulatory services, such as carbon sequestration, can generate income for the community. In addition, ecotourism and cultural and natural heritage sites are identified, protected, and developed, and also generate income for the community.

As with forests, other sensitive sites such as wetlands are protected and conserved for their natural values. In contrast, agricultural production is prioritised in the fertile parts of the landscape. Farmland is a diverse mosaic of food crops, cash crops, irrigation areas, pastures, and trees. The selection of crops and agricultural production methods is guided by the suitability of the soil, topography, and local preferences. By 2040, strategic land use planning and its implementation have thus created a multifunctional landscape that is zoned for different land use purposes. Land allocation is efficient, and sustainable land management has enhanced food security, biodiversity conservation, and social equity.

Bara 2040tti karoorri itti fayyadama lafaa guutummaa naannoo kanaa keessatti akka hojiirra oolu ni godhama. Itti fayyadamni lafaa kan qajeelfamu karoora tarsiiimawaa itti fayyadama qabeenya uumamaa (biyyee, bosona, bishaan, albuuda, teessuma lafaa, fi qabeenya biroo) gaarii ta'eeni. Karoorri filannoo hawaasaa galmoota hawaasummaa, dinagdee fi naannoo akkasumas haala jireenya ammaa fi gara fuula duraatiifis ni ilaala. Haala qubsuma/dandeetti lafaa irratti hundaa'un karoorri itti fayyadama lafaa teessumaa lafaa akka faayidaa garagaraaf ta'utti qoodee kaa'a. Bosonni uumamaa adda baafamee, daangeffamee, eegumsa cimaadhan waliin kunuunfama. Kanarraa kan ka'e bineensonni bosonaa, mukkeen naannoo fi qabeenyi heddummina lubbu qabeeyyiin eegumsa argatu, kanaaf gosti fi baay'inni isaaniis dabaluu danda'a. Tajaajilli bosonaa kan akka kaarboonii qilleensaa keessaa harkisuun xiqqeessuufaa fi hawaasaaf galii argamsiisuu ni dabala. Kana malees, Daawwi fi iddoowwan hambaalee aadaa fi uumamaa adda baafamanii, eegamanii, misoomsuun, akkasumas galii hawaasaaf mad-disiisu. Akkuma bosonaatti; iddoowwan baay'ee barbaachisoo ta'an kan akka lafa caffee kan madaala uumamaa eeguf fayyadan eegumsi fi kunuunsi ni godhamaaf. Kara biraatiin, Oomisha qonnaatif lafa gabbataatutu filaama. Lafti qonnaa bakka argama gosa midhaan nyaataa, midhaan gabaa, jallisii, lafa kaloo fi mukkeen adda addaati. Filannoon midhaanii fi oomisha qonnaa haala gabbina biyyee, teessuma lafaa fi haala naannoo irratti hundaa'a. Bara 2040tti karoorri itti fayyadama lafaa tarsiiimoo fi hojiirra oolmaan isaa haala kanaan lafa faayidaa garagaraa qabu kan kaayyoo itti fayyadama lafaa adda addaatiif qoodamaa ta'e uuma. Ramaddiin lafaa gahumsa kan qabu yoo ta'u, kunuunsi lafaa itti fufiinsa qabu wabii nyaataa ni mirkaneessa, kunuunsa lubbu qabeeyyii hedduu ni kunuunsa akkasumas walqixxummaa hawaasaa ni guddisa.

Current barriers and opportunities / Hudhaale fi carraawwan yeroo ammaa

Barriers / Hudhaalee

- Poor land use planning and enforcement
- Limited technical, financial, and human resource capacity for land use planning and enforcement

- Weak information on and lack of systematic inventory of land resources
- Gaps in awareness and weak enforcement of land tenure and resource ownership security
- Gaps in land tenure policy in state forests
- Karoorri itti fayyadama lafaa fi raawwin isaa lafaa ta'u
- Karoora itti fayyadama lafaa baasuu fi hojiirra oolchuuf hanqinni dandeettii gama ogummaa, maallaqaa fi humna namaa jiraachuu.
- Hanqina odeeffannoo fi galmeen qabeenya lafaa sirnaaan taa'e dhabamuu
- Hubannoo dhabuu fi raawwii lafaa abbummaa qabiyyee lafaa fi wabii abbaa qa-beenyummaa irratti mul'atu.
- Abbaan qa-beenyummaa lafaa kan lafa bosonaa mootummaan daangahee kees-satti argamu sirnaan murtaahuu dhabuu

Opportunities / Carraawwan

- Many stakeholders recognise the need for land use planning
- Land resource inventory and land registration processes are beginning to be implemented
- Technical capacity-building programs are being delivered to experts
- Qooda fudhattoonni hedduun barbaachisummaa karoora itti fayyadama lafaaf beekamtii kennuu
- Adeemsi galme qabeenya lafaa fi hojiirra oolman isaa eegaluu
- Sagantaaleen leenjii dandeettii ogummaa ijaaran ogeeyyif kennamaa jiraachuu

Strategies / Tooftaalee/Tarsiimoo

The implementation of the following strategies was identified during the stakeholder workshops as being particularly important for achieving this principle:

- Improving the technical competence of frontline landscape managers and planners through implementing capacity-building programs;
- Filling gaps in knowledge, financial resources, and human resources related to land resource inventory, spatial mapping of resources, land use planning, enforcement, and monitoring;
- Creating awareness of the significance of sustainable land management;
- Strengthening land tenure and resource security through land certification;
- Establishing participatory land capability assessment and land use planning, including classification, implementation, monitoring, and evaluation;
- Supporting the implementation of land use planning through appropriate policy frameworks.

Qajeelfama kana galmaan ga`uuf hojiilen armaan gadii kunniin yoo hojjetaman galma ga`uu akka danda`u yeroo waltajjii qooda fudhattootni adda baasaniiru:

- Sagantaa ijaarsa dandeettii ogummaa hoggantoota fi karoorsitoota teessuma lafaa adda durummaa hojjetanii fooyyessuu;
- Hanqina beekumsaa, qabeenya faayinaansii fi humna namaa kanneen gama galmee qabeenya uumamaa, kaartaa iddoo qabeenyaa, karoora itti fayyadama lafaa, raawwachiisummaa fi hordoffii guutuu jiru duuchuu;
- Barbaachisummaa kunuunsa lafaa itti fufiinsa qabu irratti hubannoo uumuu;
- Seera itti fayyadama lafaa fi qabiyyee/wabii lafaa mirkaneessan cimsuu;
- Qoqqooddaa, raawwii, hordoffii, fi madaallii dabalatee karoora ramaddii lafaa itti fayyadama lafaa hirmaachisaa ta'e diriirsuu;
- Galma ga`iinsa karoora itti fayyadama lafaa imaammata mijatoo ta'aniin deeggaruu.

Degree of stakeholders' agreement and consistency with scientific findings / Sadarkaa waliigaltee qooda fudhattootaa fi argannoo saayinsii waliin

All stakeholders agreed on the need for strategic land use planning and enforcement. The importance of good land use planning also emerged from previous scientific research in the study area (Jiren et al., 2018; Jiren et al., 2020b; Jiren et al., 2021; Jiren et al., 2022).

Qooda fudhattoonni hundinuu barbaachisummaa karoora itti fayyadama lafaa tarsii-moo fi raawwii irratti waliigalaniiru. Barbaachisummaan karoora itti fayyadama lafaa bareedaa ta'e qorannoo saayinsawaa kanaan dura naannoo sanarratti gaggeeffame ir-raas mul'ateera (Jiren fi kkf, 2018; Jiren fi kkf, 2020b; Jiren fi kkf, 2021; Jiren fi kkf, 2022).

Interactions with other principles / Hariiroo qajeelfamoota biroo waliin qabu

Strategic land use planning and enforcement relies on participatory, decentralized and context-specific governance and institutions (Principle 6) as well as on land tenure security throughout the landscape (Principle 7). Land use planning ensures that land is used efficiently and appropriately for environmental conservation and nature restoration (Principles 2, 4), agricultural development (Principle 3), and for establishing a bioeconomy based on heritage preservation and ecotourism (Principle 5).

Karoorri tarsiimawaan itti fayyadama lafaa fi raawwachiisummaan isaa hirmaachisaa, bulchiinsa fi aangoo haalaa naannoo giddu galaessa godhetee fi dhaabbilee waloo irratti hundaa'a (Qajeelfama 6ffaa) akkasumas abbummaa qabiyyee lafaa mirkanees-suu teessuma lafaa irratti hundaa'a (Qajeelfama 7). Karoorri itti fayyadama lafaa, lafti kunuunsa naannoo fi qabeenya uumamaa deebisanii dhaabuuf haala ga'umsaa qabuu fi sirrii ta'een akka dhimma itti ba'uuf dandeessisa (Qajeelfama 2, 4), misooma qonnaa (Qajeelfama 3), akkasumas diinagdee uumama irratti hundaa'en kunuunsa hambaalee fi 'ikootuurizimii' irratti hundaa'e hundeessuuf (Qajeelfama 5).





Principle 2 / Qajeelfama 2

Environmental conservation and a biosphere reserve

Eegumsa naannoo fi kuusaa lubbu qabeeyyii daangeffamanii itti kunuunsifaman

Summary of this component of the shared vision / Cuunfaa qajeelfamaa kan qaama mul'ata waloo kanaa

By 2040, environmental conservation will be undertaken as follows:

- A new biosphere reserve is established that spans Gera, Gumay and Setema woredas.
- The biosphere reserve classifies the landscape into the core, buffer, and transitional areas.
- The biosphere reserve improves the level of biodiversity as well as social relations, and ensures a sustainable balance between environmental conservation and local development.

Bara 2040tti kunuunsi naannoo akka armaan gadiitti ni raawwatama:

- Kuusan lubbu qabeeyyii (Baayosfera) haaran kan aanaa Geeraa, Gumaay fi Saxxammaa haammate hundeeffameera.
- Hundeeffama kuusaa lubbu qabeeyyii Kanaarraa kan ka'e haalli itti fayyadama lafaa gama sadiitti akka wiirtuu, giddu-galaa fi ce'umsa jedhamee qoodama.
- Kuusan lubbu qabeeyyii sadarkaa heddummina lubbu qabeeyyii akkasumas hariiroo hawaasaa kan fooyyessuu yoo ta'u, kunuunsa qabeenya uumamaa fi misooma naannoo gidduutti madaallii itti fufiinsa qabu ni mirkaneessa.

Description of the principle / Ibsa qajeelfamichaa

By 2040, a new biosphere reserve will be established in the landscape, which spans multiple administrative units and leads to sustainable environmental management, increased biodiversity and ecosystem services, and improved social wellbeing. Semi-natural forest and wildlife within the landscape are strictly protected, while farmland trees and biodiversity are maintained through integration with agricultural production. As a result of active nature conservation in the landscape, biodiversity and other environmental conditions, such as the local microclimates, improve. People in the landscape gain nature-based income through, for example, ecotourism and carbon trade.

Bara 2040tti Kuusan lubbu qabeeyyii teessuma lafaa keessatti ni hundeffama. Inni kunis sadarkaalee bulchiinsaa heddu haammachuudhaan kunuunsa naannoo itti fufiinsa qabutti fida akkasumas heddumina lubbu qabeenyi ni baay'isa, tajaajila sirnakoo fi haala jireenya ni guddisa. Bosona uumamaa banaa fi bineensonni bosonaa teessuma lafichaa keessa jiran haalan kan eegaman yoo ta'u, mukkeen lafa qonnaa fi heddummina lubbu qabeeyyii oomisha qonnaa wajjin kunuunfama. Sababa kunuunsa qabeenya uumamaatiin heddummina lubbu qabeeyyii fi haalli qilleensa naannoo ni fooyya'a. Namoonni teessuma lafa keessa jiran madda galii qabeenya uumamaa irratti hundaa'e kan akka 'ikootuurizimii' fi daldala kaarboonii irraa ni argatu.

The established biosphere reserve consists of three main areas or zones, namely the core, buffer, and transitional zones. The core zone mainly covers largely unmodified patches of forest, and it is strictly protected for the conservation of forest biodiversity, including wildlife, genetic resources, as well as ecosystem services, such as carbon sequestration and bequest values. The buffer zone surrounds the core zone, and provides a protective belt between the core and the transitional zone. People use the buffer zone for low-intensity, sustainable purposes such as the generation of income from shade coffee production, collection of spices, and honey production. Also, tourism and scientific studies such as bird watching and wildlife tracking services are undertaken in this zone. The transitional zone is the largest outer part of the biosphere reserve, where sustainable agricultural production and other development activities are carried out.

Kuusaa kunuunsa lubbu qabeeyyitiif hundeeffame iddoo gurguddoo sadii of keessatti qabaata; isaanis wiirtuu, giddu galeessa fi Qarqara/ce'uumsa kuusati. Wiirtun keessoo bosonaa kan hin tuttuqamne yoo ta'u iddoo kunuunsa bineensonni fi sanyiiwwan uumamaa itti kunuunfamanii fi iddoo tajaajilli sirnakoo kan akka caarboonii harkisanii kuusuu fi faayidaa uumamaan dhala namaaf kennan irraa argamuudha. Giddu galli immoo kan iddoo wiirtuu marsee argamu fi faayidaa eegumsaa iddoo wiirtuu fi qarqaraaf kennuudha. Namoonni naannoo iddoo giddu galeessaa kana kaayyoo akka hojii bal'inaan hin hojjetamne akka gaaddisa bunaaf, mi'eessituu funaanuuf, fi oomisha dammaa fa'aaf fayyadamu. Akkasumas, iddoo kun tajaajila daawwanaf (tourism) fi qorannoon saayinsawaan kan akka simbirroota ilaaluu fi hordoffii bineensota bosonaa ni oola. Iddoon Qarqaraa/ce'umsaa kutaa kuusaa isa alaa isa guddaa yoo ta'u, bakka oomishni qonnaa itti fufiinsa qabuu fi hojiiwwan misoomaa biroo itti raawwatamaniidha.



Current barriers and opportunities / Hudhaalee fi carraawwan yeroo ammaa

Barriers / Hudhaalee

- Lack of clear and enforceable forest and wildlife conservation programmes
- No meaningful participation of local people in the management of forest resources
- Increasing deforestation through charcoal making and agricultural expansion
- Crop raiding by wildlife
- Limited development of nature-based income sources such as ecotourism and carbon trade
- Absence of good governance and poor support from institutions other than public organizations

- Sagantaa kunuunsa bosonaa fi bineensota bosonaa ifa ta'ee fi hojiirra ooluu danda'u dhabuu
- Bulchiinsa qabeenya bosonaa keessatti hirmaannaan namoota naannoo hiika qabu dhabamuu
- Oomisha cilee fi babal'ina qonnaatiif jecha bosona ciruu
- Midhaan/oomishni bineensota bosonaan weeraramuu
- Misoomni maddoota galii uumamarratti hundaa'e kan akka 'ikootuurizimii' fi daldalli kaarboonii xiqqaachuu
- Rakkoo bulchiinsa gaarii fi dhaabbilee mootummaa irraa deeggarsa dhabuu

Opportunities / Carraawwan

- Nature conservation and traditional environmentally friendly resource use reflect local tradition and experience
- A biosphere reserve and associated land management would be very suitable for the existing biophysical landscape
- The landscape is rich in forest and other biodiversity resources, and is suitable for multifunctional and multi-enterprise development

- Kunuunsi qabeenya uumamaa fi itti fayyadamni isaa aadaa, duudhaa fi muuxannoo naannoo calaqqisiisuu
- Halli naannoo kuusaan lubbu qabeeyyii fi bulchiinsi lafaa kanaan walqabatu teessuma lafaa keessatti mijata ta'uu
- Teessumni lafaa qabeenya bosonaafi heddummina lubbu qabeeyyii birootiin kan badhaadhe fi hojiiwwan adda addaa fi guddina dhaabbilee hedduuf kan mijatu dha

Strategies / Tooftaalee/Tarsiimoo

The implementation of the following strategies was identified during the stakeholder workshops as being particularly important for achieving this principle:

- Establishing participatory land capability assessment and land use planning;
- Building capacity of institutions from local to district level, for example through regular on-the-job training, budgeting, staffing, and monitoring;
- Establishing an institution for inclusive biosphere reserve management, involving diverse stakeholders from multiple administration levels that oversee its demarcation and overall operation;
- Institutionalizing Participatory Forest Management for equitable sharing of costs and benefits;
- Planting trees on degraded land;
- Strengthening land tenure and resource ownership security;
- Creating awareness and building capacity of local people;
- Strengthening traditional farming practices including agroforestry;
- Strengthening market linkages through expansion of bioeconomy projects and cooperatives.

Qajeelfama kana galmaan ga`uuf hojiileen armaan gadii kunniin yoo hojjetaman galma ga`uu akka danda`u yeroo waltajjii akka qooda fudhattootni adda baasaniiru:

- Madaallii dandeettii lafaa fi karoora itti fayyadama lafaa hirmaachisaa ta'e fi kan haala qabiyyee lafaa/dachee giddu galeeffate diriirsuu;
- Dandeettii dhaabbilee sadarkaa gandaa hanga aanaatti ijaaruu, fakkeenyaaf leenjii yeroo hunda hojii, baajata, hojjettoota, fi hordoffii irratti kennuu;
- Dhaabbata bulchiinsa kuusaan lubbu qabeeyyii hunda hammate hundeessuun, qooda fudhattoota adda addaa sadarkaa bulchiinsa garagaraa irraa dhu-fan kanneen daangaa isaa fi hojii waliigalaa to'atan hirmaachisu;
- Baasii fi faayidaan haqaan akka qoodamu taasisuuf dhaabbata bulchiinsa bosonaa hirmaachisaa taasisuu;
- Lafa manca'e irratti biqiltuu dhaabuu;
- Qabiyyee lafaa fi abbummaasaa cimsuu;
- Hubannoo uumuu fi dandeettii ummata naannoo ijaaruu;
- Qonnaa wal makaa dabalatee barmaatilee qonna aadaa cimsuu;
- Misooma diinagdee uumama irratti hundaa'e fi waldaalee hojii gamtaa ba-bal'isuudhaan hariiroo gabaas cimsuu.

Degree of stakeholders' agreement and consistency with scientific findings / Sadarkaa waliigaltee qooda fudhattootaa fi argannoo saayinsii waliin

Stakeholders agreed on the need for environmental conservation, and agreed that establishing a carefully zoned biosphere reserve could provide a suitable framework for achieving this goal, while also improving livelihoods. The importance of preserving forest patches has been confirmed in previous scientific work, for example because of its importance for the conservation of woody vegetation (Shumi et al., 2019b), birds (Rodrigues et al., 2018), and mammals (Rodrigues et al., 2019; Rodrigues et al., 2021). The complementary conservation value of farmland biodiversity (e.g. in a possible buffer zone) has been demonstrated, for example, by Shumi et al. (2018).

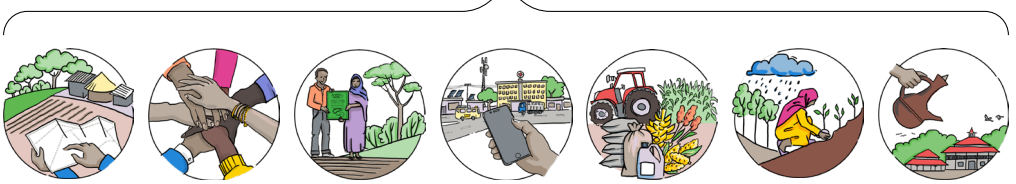
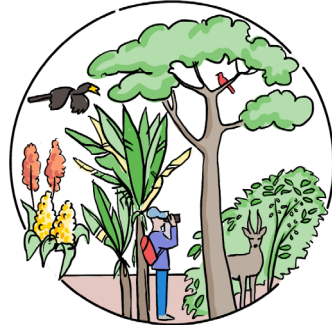
Qooda fudhattoonni barbaachisummaa kunuunsa naannoo irratti waliigalaniiru, akkasumas kuusaan lubbu qabeeyyii of eeggannoodhaan iddoo argama isaaniitti hundeesuun hojii kana galmaan ga'uuf bu'uura mijaawaa ta'uu danda'a, akkasumas haala jireenya hawaasaas fooyyessuu akka danda'u waliigalaniiru. Barbaachisummaan kunuunsa bosona ciccitaa hojii saayinsii kanaan duraa keessatti mirkanaa'ee ture, fakkeenyaaf barbaachisummaa inni kunuunsa biqiltoota mukaa (Shumi fi kkf, 2019b), birds (Rodrigues fi kkf, 2018), fi hoosistootaaf qabu (Rodrigues fi kkf, 2019; Rodrigues fi kkf, 2021). Faayidaan dabalataa; heddumina lafa qonnaa (fkn Qarqara/ce'uumsa kuusaa keessa ta'uu) agarsiifameera (Shumi fi kkf, 2018).

Interactions with other principles / Hariiroo qajeelfamoota biroo waliin qabu

Environmental conservation and the establishment of a biosphere reserve in the landscape depend on strategic land use planning and enforcement (Principle 1), participatory, decentralized and context-specific governance and institutions (Principle 6), as well as land tenure security (Principle 7), and reliable infrastructure and technology (Principle 8). A biosphere reserve can, in turn, ensure sustainable agricultural development and food security (Principle 3) and restoration of degraded land (Principle 4), and support the development of a bioeconomy based on ecotourism (Principle 5).

Teessuuma lafaa keessatti kunuunsi naannoo fi hundeeffamni Kuusaa lubbu qabeeyyii karoorra itti fayyadama lafaa tarsiimawaa fi raawwiisaa irratti hundaa'a (qajeelfama 1), bulchiinsa fi dhaabbilee hirmaachisaa, bulchiinsa giddu galeessaa fi haala naannoo irratti hundaa'e ta'a (qajeelfama 6), akkasumas wabii qabiyyee lafaa (qajeelfama 7), fi bu'uuraalee misoomaa fi teeknooloojii amanamoo ta'an (qajeelfama 8). Kuusaan lubbu

qabeeyyii dabaree isaatiin misooma qonnaa fi wabii nyaataa itti fufinsa qabu mirkan-
eessuu (qajeelfama 3) fi lafa manca'e deebisanii kunuunsuu (qajeelfama 4), akkasumas
misooma diinagdee uumamarratti hundaa`e deeggaruus ni danda'a (qajeelfama 5).







Principle 3 / Qajeelfama 3

Agricultural development and food security

Misooma qonnaa fi wabii midhaan nyaataa

Summary of this component of the shared vision / **Cuunfaa qajeelfamaa kan qaama mul'ata waloo kanaa**

By 2040, agricultural development will be undertaken as follows:

- The food security of households has improved due to increased agricultural production and productivity.
- The farmland is multifunctional and consists of a diversity of food and cash crops.
- Farming is organized based on land use planning and implementation.
- Farming is characterized by a mixture of traditional low-input agriculture, irrigated farming, and agroforestry, as well as some intensified farming in suitable locations.
- Alternative sources of income and livelihood enhance food security.
- Smallholders are the focus for agricultural development and food production.

Bara 2040tti misoomni qonnaa akka armaan gadiitti ni raawwatama:

- Sabaaba oomishaa fi oomishtummaan qonnaa dabaleef wabiin midhaan nyaataa fooyya'eera.
- Lafti qonnaa faayidaa adda addaa kan qabu yoo ta'u, midhaan nyaataa fi gabaa of keessatti haammata.
- Qonni kan qindaa'u karoora itti fayyadama lafaa fi raawwii isaarratti hundaa'udhaani.
- Malli qonna aadaa galtee xiqqaa qabu, jallisii fi qonni walmakaan, akkasumas qonna fooyya'aan tokko tokko bakka mijaawaatti ni beekama.
- Maddootni galii fi haala jireenyaa adda addaa wabii midhaan nyaataa ni fooyyessa.
- Qonnaan bultoonni lafa qonnaa xixiqqaa qaban tarsiimoo misooma qonnaa fi oomisha midhaan nyaataa keessatti xiyyeffannoo argataniiru.

Description of the principle / Ibsa qajeelfamichaa

By 2040, the number of people suffering from seasonal food insecurity has significantly declined. Sufficient, diversified, and nutritious food is available to all people from sufficient own food production, income from the bioeconomy and employment, as well as from some imported food crops.

Bara 2040tti lakkoofsi namoota wabii midhaan nyaataa yerootiin rakkatanii haalaan ni hir'ata. Nyaanni gahaan, gosa garagaraa fi madaalawaa ta'e namoota hundaaf oomisha mataa isaanii gahaa ta'e irraa, galii qabeenya uumamaa irratti hundaa'e fi hojiirraa, akkasumas midhaan nyaataa biyya alaatii galfaman tokko tokko irraa ni argama.

Smallholder-based agricultural production and productivity have increased, and this leads to sufficient availability of food crops in the landscape. Food crops such as maize, teff, sorghum, millet, horse beans, peas, haricot bean, enset-false banana, potato, other vegetables, and fruits are produced both for consumption within the landscape, as well as for distribution to other parts of the country. Land use planning facilitates both traditional and intensified food crop production. On the one hand, farmland in the landscape consists of mixed-farming of food and cash crops integrated with farmland trees. Food crops are primarily produced by smallholders exclusively on land suitable for farming, and traditional agroecological practices such as inter-cropping as well as agroforestry practices are widely practiced in the landscape, and help to boost diversified food crop production. On the other hand, modern food crop farming is employed, particularly on flat land suitable for farm modernization. Intensive agricultural production, including irrigated farming of cereals, vegetables and fruits, cluster farming and small-scale mechanized farming, and use of agri-fertilizers and improved seeds, is applied in some parts of the landscape, based on the suitability of land resources.

Omishni fi oomishtummaan qonnaan bultoota lafa xixiqqaa qabanii guddateera, kunis midhaan nyaataa teessuma lafa sanaarratti gahaa ta'ee akka argamu taasisa. Midhaan nyaataa kanneen akka boqqolloo, xaafii, bisingaa, daagujjaa, baaqelaa, atara, muuzii, dinnichaa, kuduraalee biroo, fi fuduraaleen teessuma lafaa keessatti nyaata fi raabsuufis oomishamaniiru. Karoorri itti fayyadama lafaa oomisha midhaan nyaataa aadaa fi cimsanii qotuu ta'eef ni mijeessa. Gama tokkoon lafti qonnaa qonna walmakaa midhaan nyaataa fi midhaan gabaa kunuunsa mukaatin wal keessa jiruudha. Midhaan nyaataa adda durummaan qonnaan bultoota lafa xixiqqaa qaban qofaan lafa mijataa irratti kan oomishaman yoo ta'u, malli qonnaa aadaa naannoo kan midhaan walkeessatti oomishamu akkasumas qonnaa wal makaa teessuma lafichaa keessatti bal'inaan oomishuun midhaan nyaataa gosa adda addaa guddisuuf gargaaru. Gama biraatiin qonni midhaan nyaataa ammayyaa`aa keessumaa lafa diriiraa mijatu irratti raawwatameera. Qonna cimsaii/gadi fageenyaan qotuudhaan kanneen akka kuduraa fi muduraa jallisiin oomishuu, qonna kilaastaraa fi qonna meeshaalee qonnaa xixiqqaa dabalatee, akkasumas xaa'oo qonnaa fi sanyii fooyya'aa fayyadamuu dabalatee haala mijataa lafa irratti hundaa'uun kutaalee teessuma lafaa tokko tokkotti hojiirra oola.

In addition to crop farming, the food security of people improves through the income gained from livestock and cash crop production, as well as through income generated from natural resources and the environment. Cash crops such as eucalyptus are produced by smallholders on degraded land. Khat has expanded in the landscape, but is restricted to homegardens, and intercropped with food crops such as maize and sor-

ghum. Fruit trees such as mango and oranges, and enset are widely produced on the hillsides, riversides, and in homegardens to supplement food for consumption and as income sources. Coffee is mostly produced organically as a shade coffee within suitable altitudes. The cash crops generate income for local people through their distribution to different markets, including at the national and global levels.

Qonna midhaaniitti dabaalee, galiin looni fi oomisha midhaan gabaa irraa argamuun, akkasumas galii qabeenya uumamaa fi naannoo irraa argamuun wabii midhaan nyaataa namootaa fooyya'e. Midhaan maallaqaa kan akka baargamoo qonnaan bul'toota lafa xixiqqaa qabaniin laf gabbataa hin taane irratti kan oomishamanidha. Jimaan teessuma lafa garagaraa keessatti babal'ateera, garuu naannoo oddoo manaa biqiltuu manaa qofa irratti daangeffamee midhaan nyaataa kan akka boqqolloo fi bisingaa waliin walkeessa oomishama. Mukkeen firii qaban kanneen akka maangoo fi burtukaana, fi qochoo bal'inaan naannoo tabbaa, qarqara lagaa fi boroo manaa keessatti akka nyaata dabalataa fi madda galii ta'uuf oomishamu. Bunni irra caalaa buna oorgaanikaa gaddisaa jalatti lafa mijataarratti oomishama. Midhaan gabaa kun sadarkaa biyyaa fi addunyaa dabalatee gabaa adda addaatti raabsamuun ummata naannootiif galii argamsiisa.

Current barriers and opportunities / Hudhaalee fi carraawwan yeroo ammaa

Barriers / Hudhaalee

- Lack of capability-based land use planning and enforcement
 - Small landholdings and high cost of inorganic inputs
 - Technology aversion and poor adoption of improved practices by local people
 - Rain-fed agriculture
 - Poor development and conservation programmes and projects in the area
 - Weak enforcement of land tenure and resource ownership
 - Low social cohesion, including low work motivation and increased youth addiction to khat
 - Wildlife crop raiding
 - Long product market chains and many market intermediaries
 - Increasing deforestation and land degradation
 - Alternative income and livelihood sources are not well developed
-
- Karooraa fi raawwii itti fayyadama lafaa qabiyyee lafaa walakkeeffate hundaa'uu dhabuu
 - Lafa xixiqqaa qabachuu fi baasin galtee keemikaalaa ol'aanaa ta'uu
 - Teeknooolojii jibbuu fi barmaatilee haaran namoota naannootiin fudhatama dhabuu
 - Qonna rooba gannaa qofarratti hundaa'uu

- Sagantaa fi pirojektoonni misoomaa fi kunuunsa naannoo sanaa xiqqoo ta'uu
- Raawwii eegumsa lafaa fi abbummaa qabeenya lafa lafaa ta'uu
- Kaka'umsi hojii gadi aanaa ta'uu fi dargaggoonni araada jimaa qama'uutti qabamuu dabaluu dabalatee hariiron hawaasummaa gadi aanaa ta'uu

Opportunities / Carraawwan

- Strong commitment by the government to agricultural transformation, including intensive production, irrigated farming, and cluster farming
- Growing agricultural cooperatives and unions
- High local demand for transformation, livelihood improvement, and landscape management
- The landscape is rich with environmental resources, such as water, forest, and pasture land
- Demand is high for ecosystem services and products, including coffee, livestock, and cash crops
- Mootummaan jijjiirama qonnaa kan akka lafa cimsuun qotuun oomishuu; qonna jallisii fi kilaastaraan qotuu irratti kutannoo cimaa qabaachuu
- Yuuniyeenii fi waldaa hojii gamtaa qonnaa guddachuu
- Fedhiin jijjiiramaa, fooyya'iinsa haala jireenyaa fi bulchiinsa teessuma lafaa guddaa ta'uu
- Teessumni lafaa qabeenya uumamaa, kan akka bishaanii, bosona, fi lafa dheedi chaatiin kan badhaadhe tahuu
- Fedhiin tajaajilaa oomishaalee sirnakoo fi oomisha kanneen akka buna, looni fi midhaan gabaa dabalatee olaanaa ta'uu

Strategies / Tooftaalee/Tarsiimoo

The implementation of the following strategies was identified during the stakeholder workshops as being particularly important for achieving this principle:

- Applying land use planning, including land resource assessment and inventory, soil suitability assessment and recommendation of crops produced, and land use classification based on comparative advantage;
- Building capacity of institutions from local to district level via training, budgeting, staffing, and monitoring;
- Enhancing agricultural production and productivity through utilization of technologies by local people, including building local capacity through the supply of financial services suitable to local demand and culture;

- Strengthening of kebele level Farmers Training Centers (FTC) with human resources to provide alternative means of production, land use, and market strategies;
- Expanding irrigated agriculture and its equitable use;
- Encouraging and improving traditional farming, sustainable intensification, and agroforestry systems in a way that supports nature conservation, but also increases food availability;
- Widening opportunities for diversified income sources and livelihoods;
- Strengthening and enforcing land tenure security;
- Building capacity for agricultural modernization and commercialization;
- Ensuring no suitable land is left unused;
- Increasing access to a diverse range of markets (from local to global).

Qajeelfama kana galmaan ga`uuf hojiileen armaan gadii kunniin yoo hojjeta-man galma ga`uu akka danda`u yeroo waltajjii akka qooda fudhattootni adda baasaniiru:

- Karoora itti fayyadama lafaa kan qorannoo fi galmee qabeenya uumamaa, haala gabbina biyyoo, gorsa midhaan oomishamuuf maluu, fi qoqoodda lafaa faayidaa waliin wal bira qabamee walakkeeffatu hoj-maata ilaalu oolchuu;
- Dandeettii dhaabbilee sadarkaa naannoo hanga aanaatti karaa leenjii, baajata, hojjetoota, fi hordoffii ijaaruu;
- Omishaa fi oomishtummaa qonnaa guddisuuf itti fayyadama teeknooloojii namoota naannootiin, akkasumas dandeetti dhiyeessii tajaajila faayinaansii fedhii fi aadaa naannoo keessaatiin ijaaruu;
- Giddu-galli Leenjii Qonnaan Bultootaa (FTC) sadarkaa gandaa humna namaatiin cimsuudhaan mala oomishaa, itti fayyadama lafaa, fi tarsiimoo gabaa filannoo ta'e dhiyeessuu;
- Qonna jallisii babal'isuu fi itti fayyadama isaa haqa qabeessa taasisuu;
- Mala qonna aadaa jajjabeessuu, cimsanii qotuu itti fufiinsa qabu, fi qonnaa walmakaa haala kunuunsa uumamaa deeggaruun fi midhaan nyaataa dabalun hojjechuu;
- Carraa madda galii fi haala jireenya adda addaa bal'isuu;
- Abbumaa qabiyyee lafaa cimsuu fi kabachiisuu;
- Dandeettii ijaarsa qonnaa ammayyeessuu fi daldalaaf oolchuu;
- Lafti mijaawaa ta'e kamiyyuu osoo itti hin fayyadamne akka hin hafne gochuu;
- Carraa gabaa adda addaa (kan biyya keessaa irraa kaasee hanga addunyaatti) argachuu guddisuu.

Degree of stakeholders' agreement and consistency with scientific findings / Sadarkaa waliigaltee qooda fudhattootaa fi argannoo saayinsii waliin

Stakeholders universally agreed on the need to ensure food security. However, preferred strategies on agricultural production differed to some extent. Some stakeholders strongly favoured conventional agricultural intensification, whereas others envision agroecological, low-external input farming as a more sustainable pathway for the landscape. This difference in preferences is consistent with previous scientific studies (Jiren et al., 2018; Jiren et al., 2020a). Farmland is currently rich in tree biodiversity (Shumi et al., 2018; Shumi et al., 2019a), and diversified livelihoods including a mixture of food and cash crops appear to be best to ensure local food security (Manlosa et al., 2019a).

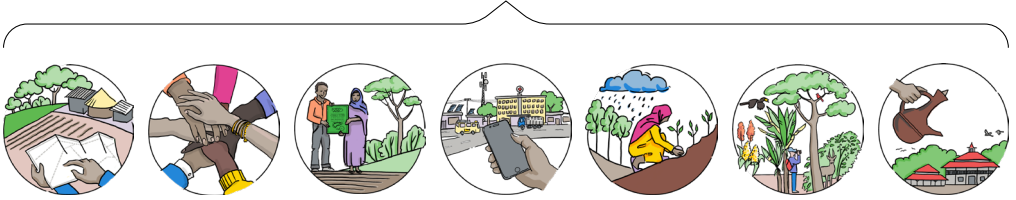
Walumaagalatti qooda fudhattoonni wabii nyaataa mirkaneessuun barbaachisaa ta'uu irratti waliigalaniiru. Haa ta'u malee, tooftaaleen filatamaa oomisha qonnaa irratti hamma tokko garaagarummaa qabu. Qooda fudhattoonni tokko tokko qonna barama cim-suu haalan kan deggeran yoo ta'u, kaan ammoo qonna haala naannoo keessatti cimuu danda'uun, galtee alaa gadi xiqqaadhan itti fufiinsan oomishamu filatani. Garaagarummaan filannoo kun qorannoowwan saayinsii kanaan duraa wajjin kan walsimudha (Jiren fi kkf, 2018; Jiren fi kkf, 2020a). Lafti qonnaa yeroo ammaa heddummina mukaatiin kan badhaadhedha (Shumi fi kkf, 2018; Shumi fi kkf, 2019a), akkasumas midhaan nyaataa fi midhaan gabaa dabalatee wabii nyaataa mirkaneessuuf hunda caalaa gaarii ta'ee mul'ata (Manlosa fi kkf, 2019a).

Interactions with other principles / Hariiroo qajeelfamoota biroo waliin qabu

Agricultural development and food security in the landscape is based on strategic land use planning and enforcement (Principle 1), participatory, decentralized and context-specific governance and institutions (Principle 6), as well as land tenure security (Principle 7), infrastructure and technology (Principle 8), and the restoration of degraded land (Principle 4). Sustainable agricultural development can take place in the buffer and transitional zone of a biosphere reserve (Principle 2), and be combined with alternative income sources, such as ecotourism (Principle 5).

Misoomni qonnaa fi wabii nyaataa teessuma lafaa keessatti karoora itti fayyadama lafaa tarsiimawaa fi raawwachiisummaa (qajeelfama 1), bulchiinsa fi dhaabbilee waloo fi giddugaleessaa kan haala naannootiin wal simu (qajeelfama 6), akkasumas wabii qabiyyee lafaa (qajeelfama 7), bu'uuraalee misoomaa fi teeknoolojii (qajeelfama 8) ak-

kasumas lafa manca'e deebisani dhaabuu (qajeelfama 4). Misoomni qonnaa itti fufiinsa qabu naannoo gid dugalaa fi qarqaraa ce'umsaa kuusaa lubbu qabeeyyii keessatti raawwatamuu danda'a (qajeelfama 2), akkasumas filannoo maddoota galii kan akka ikootuurizimii wajjin walitti makamuu danda'a (qajeelfama 5).





Principle 4 / Qajeelfama 4

Restoration of degraded land

Lafa manca'e deebisanii gabbisuu

Summary of this component of the shared vision / Cuunfaa qajeelfamaa kan qaama mul'ata waloo kanaa

By 2040, land restoration will be undertaken as follows:

- Hillsides are covered with socially, economically and ecologically valuable trees.
- Soil erosion is reduced through regular implementation of soil and water conservation measures.
- Vegetation cover enhances micro-climatic conditions.
- Wetlands are protected for their ecological values.
- Sustainable land management ensures that unsuitable trees such as eucalyptus do not take over fertile land.

Bara 2040tti misoomni qonnaa akka armaan gadiitti ni raawwatama:

- Gaarren jiran mukkeen tajaajila hawaasaf, diinagdee fi eegumsa naannoo qabaniin uwwifameera.
- Sababa galma gahiinsa hojiiwwan eegumsa biyyoof bishaanitiin dhiqamni biyyoof bishaanii hir'ateera.
- Uwwisni biqilootaa haala qilleensaa naannoo fooyyessa.
- Lafti caffee faayidaa isaan madaala uumamaa eeganiif ni eeggamu.
- Kunuunsi lafaa itti fufiinsa qabu mukkeen mijatoo hin taane kan akka baargamoo lafa gabbataa akka hin fudhanne taasisa.

Description of the principle / Ibsa qajeelfamichaa

By 2040, degraded land, wetland, and hillsides are restored through plantations of socially, economically and ecologically valuable trees, as well as soil and water conservation programmes, and appropriate land use planning. The restoration of degraded land generally improves the natural capital of the landscape. Degraded land and hillsides of the landscape are covered with woody vegetation, wetlands are primarily conserved for their biodiversity, soil and water resources are conserved, and land use and sustainable land management programmes are being implemented. Planting trees within the farmland, on hillsides, riverbanks, and in degraded parts of the landscape

also facilitates landscape restoration, and improves agricultural production and productivity as well as farmland biodiversity. Wetlands in the landscape are conserved through reduced farming in these areas. The ongoing implementation of soil and water conservation programmes, such as through physical measures and the planting of trees, has reduced soil erosion, enhanced agricultural productivity, and improved forest cover within the landscape. Land use is strictly carried out according to land suitability, and eucalyptus plantations are only permitted on degraded land.

Bara 2040tti lafti manca'e, lafti caffee fi gaarren mukkeen hawaasaf, guddina dinag-dee fi eegumsa naannoof faayidaa qaban qaban dhaabudhan ni deebi`a , akkasumas sagantaalee eegumsa biyyee fi bishaanii, fi karoorra itti fayyadama lafaa sirrii ta'een lafti manca`e ni deebi`a. Akka waliigalaatti lafa manca'e deebisuun qabeenya uumama teessuma lafaa keessatti ni fooyyessa. Lafti manca'ee fi gaarren biqiloota mukaatiin kan uwwifame yoo ta'u, lafti caffee qabu addatti heddummina lubbu qabeeyyii isaaniif haalan kunuunfamu; qabeenya biyyee fi bishaanii kunuunfama, akkasuma sagantaaleen itti fayyadama lafaa fi bulchiinsa lafa itti fufiinsa qabu hojiirra ooleera. Lafa qonnaa keessa, gaarrenirra, qarqara lagaa, fi kutaalee lafa manca'an keessatti biqiltuu dhaabuunis teessuma lafaa manca`e deebisuuf haala mijeessa, akkasumas oomishaa fi oomishtummaa qonnaa fi heddummina lubbu qabeeyyii lafa qonnaa ni fooyyessa. Lafti caffee teessuma lafaa keessa jiru qonna naannoo sana keessaa hir'isuudhaan kunuunfama. Sagantaawwan kunuunsa biyyee fi bishaanii kan akka hojii Fiizikaalaa fi biqiltuu dhaabuun (biological) hojiirra oolchuun itti fufee jiru, dhiqannaa biyyee hir'isuu, oomishtummaa qonnaa guddisuu, fi uwwisa bosona teessuma lafa keessatti fooyyessuu danda'eera. Itti fayyadamni lafaa akkaataa gabbina lafaatiin cimsamee kan raawwatamu yoo ta'u, dhaabbin baargamoo lafa manca'e qofa irratti kan hayyamamudha.

Current barriers and opportunities / Hudhaalee fi carraawwan yeroo ammaa

Barriers / Hudhaalee

- Deforestation and agricultural expansion into the forest
- Increased soil erosion, flooding, and land degradation
- Biodiversity loss from wetland farming
- Poor land use planning and implementation
- Expansion of eucalyptus due to its market demand and high financial return
- Inappropriate inorganic fertilizer use
- Unclear property and use rights for communal land
- Poor policy enforcement regarding land use, especially eucalyptus

- Bosona ciruu fi qonni gara bosonaatti babal'achuu
- Dhiqamni biyyee lolaa fi manca'iinsa lafaa dabaluu
- Lafa caffee qonnaaf oolchurraa kan ka'e hedduminni lubbu qabeeyyii dhabamuu
- Karooraa fi hojiirra oolmaa itti fayyadama lafaa dadhabaa ta'e
- Fedhii gabaa fi bu'aa maallaqaa olaanaa irraa kan ka'e babal'ina baargamoo
- Itti fayyadama xaa'oo keemikaalaa sirrii hin taane
- lfa ta'uu dhabuu abbummaa qabeenyaa fi mirga itti fayyadama lafa waliinii
- Itti fayyadama lafaa dadhabaa, keessattuu baargamoo ilaalchisee imaammata raawwachiisummaa gaarii hin taane

Opportunities / Carraawwan

- Annual soil and water conservation programmes already exist
- Expanding tree planting initiatives, and annual planting campaigns are underway
- Strong nature conservation tradition and experience
- Potential benefits of trees for coffee production
- Land use planning is underway
- Sagantaan eegumsa biyyee fi bishaanii waggaa waggaan jiraachuu
- Jalqabbii fi duulli dhaabbii waggaa waggaadhaan bal`inaan adeemsifamaa jiraachuu
- Duudha fi muuxannoon kunuunsa qabeenya uumamaa cimaan jiraachuu
- Faayidaa biqilootni oomisha bunaatiif qaban guddaa ta'uu
- Karoorri itti fayyadama lafaa hojjetamaa jiraachuu

Strategies / Tooftaalee/Tarsiimoo

The implementation of the following strategies was identified during the stakeholder workshops as being particularly important for achieving this principle:

- Implementing uninterrupted community-based soil and water conservation programs;
- Implementing, monitoring and evaluating participatory land use plans;
- Building capacity of institutions from local to district level via training, budgeting, staffing, and monitoring of restoration programs;
- Strengthening the technical support and advisory system of agricultural offices;
- Enhancing traditional farming, sustainable intensification and agroforestry.

Qajeelfama kana galmaan ga`uuf hojiileen armaan gadii kunniin yoo hojjeta-man galma ga`uu akka danda`u yeroo waltajjii akka qooda fudhattootni adda baasaniiru:

- Sagantaa kunuunsa biyyee fi bishaanii kan addaan hin cinne hawaasa giddu-galeessa godhate hojiirra oolchuu;
- Karoora itti fayyadama lafaa hirmaachisaa ta'e hojiirra oolchuu, hordofuu fi madaaluu;
- Dandeettii dhaabbilee sadarkaa naannoo hanga aanaatti karaa leenjii, bajataa, qacarrii fi hordoffii kan badan deebisanii ijaaruu;
- Sirna deeggarsa ogummaa fi gorsa waajjiraalee qonnaa cimsuu;
- Qonna aadaa, haala itti fufinsa qabuun cimsanii qotuu fi qonnaa walmakaa guddisuu.

Degree of stakeholders' agreement and consistency with scientific findings / Sadarkaa waliigaltee qooda fudhattootaa fi argannoo saayinsii waliin

Stakeholders agreed on the benefits of restoring degraded land. This is consistent with earlier scientific studies, highlighting for example the benefits of trees within farmland (Shumi et al., 2018; Shumi et al., 2019a), or the plausibility of scenarios that include tree planting on steep slopes in particular (Jiren et al., 2020b; Duguma et al., 2022).

Lafa manca'e deebisuun misoomsun faayidaa akka qabu qooda fudhattoonni waliigal-aniiru. Kun qorannoowwan saayinsii kanaan duraatin walsima. Fkn:- Faayidaa mukkeen lafa qonnaa keessa jiran kan calaqqisiisu (Shumi fi kkf, 2018; Shumi fi kkf, 2019a), ykn ragaa senaariyoota addatti qarqara lafa olka'aa irratti biqiltuu dhaabuu of keessatti hammate (Jiren fi kkf, 2020b; Duguma fi kkf, 2022).

Interactions with other principles / Hariiroo qajeelfamoota biroo waliin qabu

Restoration of degraded land requires strategic land use planning and enforcement (Principle 1) as well as land tenure security (Principle 7). Environmental conservation traditions and experiences as well as the establishment of a biosphere reserve (Prin-

cipe 2) can support restoration. Restored parts of the landscape can be used for sustainable agricultural production (Principle 3).

Lafa manca'e deebisuuf karoorra itti fayyadama lafaa tarsiimoo fi raawwii (Qajeelfama 1) akkasumas wabii qabiyyee lafaa (Qajeelfama 7) barbaada. Duudhaa fi muuxannoowwan kunuunsa naannoo akkasumas hundeeffama kuusaa lubbu qabeeyyii (Qajeelfama 2) deebisanii dhaabuudhaan deeggaruun ni danda'ama. Kutaaleen lafa deebi'anii kunuunfamarii oomisha qonnaa itti fufinsa qabuuf oolu danda'u (Qajeelfama 3).





Principle 5 / Qajeelfama 5

Heritage preservation and development of the bioeconomy

Kuusaa hambaalee fi guddina diinagdee uumama irratti hundaa`e

Summary of this component of the shared vision / **Cuunfaa qajeelfamaa kan qaama mul'ata waloo kanaa**

By 2040, heritage development will be undertaken as follows:

- Suitable ecotourism sites are demarcated, and eco-lodges are developed, serving the dual purposes of nature conservation and economic development.
- Cultural, historic, and natural heritage sites are demarcated, developed, and utilized.
- A new biosphere reserve facilitates forest protection, as well as carbon trading, access to markets for fairtrade and organic products and improved social wellbeing.
- Local institutions and cooperatives such as youth associations, farmers' cooperatives, and traditional institutions are empowered and help to sustainably manage the landscape.

Bara 2040tti misoomni hambaalee akka armaan gadiitti ni raawwatama:

- Iddoowwan daawwannaa naannoof/ikootuurizimiif mijatan daangeffamanii, iddoo bashannana naannoo misoomaniiru, kunis kaayyoo lamaaf gargaara; kunuunsa qabeenya uumamaa fi guddina dinagdeef tajaajila.
- Iddoowwan aadaa, seena qabeessa, fi hambaalee uumamaa ni daangef-famu, ni misoomru fi ittis ni fayyadamu.
- Kuusaan lubbu qabeeyyii haaran eegumsa bosona, daldala kaarboonii, dhiyeessii gabaa haqa qabeessa fi oomishaalee orgaanikii fi haala jireenya hawaasaa fooyya'aa ta'eef ni mijeessa.
- Dhaabbileen biyya keessaa fi waldaa hojii gamtaa kanneen akka waldaa dargaggootaa, waldaa qonnaan bulootaa, fi dhaabbileen aadaa jajjabaa-chuun haala itti fufiinsa qabuun teessuma lafaa kunuunsuf gargaaru.

Description of the principle / Ibsa qajeelfamichaa

By 2040, ecotourism and biocultural heritage sites are developed, sustainably managed and utilized. The landscape is rich in natural capital, including dense forests, endemic trees, birds and wildlife species. Natural and cultural heritage sites are conserved and developed

at different locations for sustainable development and conservation. Ecotourism services are developed, and sustainable income generation from tourism is improved, whereas natural resources, including forests, wildlife, and waterfalls are conserved. Cultural and historical heritage resources and sites, such as the traditional “Jimma Coffee Ceremony”, “Shanan Gibe Gadaa” system, and Aba Jifar museums, are further developed and generate income for the community. A forest and sustainable landscape-based bioeconomy improves incomes for people in the landscape, and ensures sustainable conservation of natural and cultural resources. As a result of the development of the bioeconomy, people from different countries across the world come to the landscape to experience nature and culture, while products originating from the landscape, such as coffee, are exported to many different countries.

Bara 2040tti iddoowwan hambaalee daawwannaa naannoo/ikootuurizimii fi iddoo aadaa kan uumamaan jiru misoomuu, itti fufiinsa kanunuunfamuu fi itti fayyadamuu. Teessumni lafaa qabeenya uumamaa kan akka bosonaa, mukkeen naannoo, simbirrootaa fi gosoota bineensota bosonaatiin kan badhaadheda. Iddoowwan hambaalee uumamaa fi aadaa bakka adda addaatti misoomaa fi kunuunsa haala itti fufiinsa qabuun kunuunfamuu misoomaniiru. Tajaajilli daawwannaa naannoo/ikootuurizimii kan guddata, galiin itti fufiinsa qabu isarraa argamu ni fooyya'a, akkasuma qabeenya uumamaa kan akka bosonaa, bineensota bosonaa fi bishaan yaa'u ni kunuunfama. Qabeenya fi iddoowwan hambaalee aadaa fi seenaa, kanneen akka aadaa “Sirna affeerraa Buna Jimmaa”, sirna “Gadaa Shan-an Gibee”, fi muuziyeemii Aba Jifaar daran guddatanii galii hawaasaaf argamsiisu. Diinagdeen uumama irratti hundaa'e bosonaa fi eegumsa bosonaa itti fufiinsa qabu teessuma lafaa keessatti fooyyessuun galii uummataaf ni dabala. Kunuunsa qabeenya uumamaa fi aadaa itti fufiinsa qabus ni mirkaneessa. Bu'aa guddina diinagdee uumama irratti hundaa'e namoonni biyyoota addunyaa adda addaa irraa gara teessuma lafaatti dhufanii muuxannoo uumamaa fi aadaa kan qooddatan yoo ta'u, oomishoonni teessuma lafaa irraa maddan kan akka bunaa gara biyyoota adda addaa hedduutti ni ergamu.

Current barriers and opportunities / Hudhaalee fi carraawwan yeroo ammaa

Barriers / Hudhaalee

- Lack of financial and technical capacity for the development of ecotourism
- Poor infrastructure development including poor roads and telecommunications network
- Limited policy and institutional focus on the development of ecotourism and bioeconomy
- Weak land tenure and resource security, especially for communal resources
- Missing land use planning, and weak enforcement
- Weak development of participatory governance of natural resources
- Degradation of natural heritage sites through deforestation and agricultural expansion

- Hanqina dandeettii faayinaansii fi ogummaa guddina daawwannaa naannoo/ ikootuurizimii
- Bu'uraalee misoomaa kanneen akka daandiifi neetworkii telekoomii dadhaboo ta'uu
- Xiyyeeffannaan imaammataa fi dhaabbilee guddina daawwannaa naannoo/ikootuurizimii fi baayoo-dinagdee irratti daangeffame
- Seera itti fayyadama lafaa qabeenya dadhabaa fi wabii abbaa qabeenyummaa laafaa, keessumaa qabeenya waloorratti
- Karoorri itti fayyadama lafaa dhabamuu, fi raawwii lafaa
- Bulchiinsa qabeenya uumamaarratti hirmaannaan lafaa ta'uu
- Bosona ciruu fi babal'ina qonnaatiin iddoowwan hambaalee uumamaa mancaasuu

Opportunities / Carraawwan

- Rich cultural heritage and natural capital are part of the landscape
- Carbon trading schemes such as REDD+ are being developed
- Society maintains cultural heritage sites
- Government and private investors are expanding eco-lodges in the southwestern belt of the country
- Hambaa aadaa badhaadhaa fi qabeenyi uumamaa qaama teessuma lafaa ta'uu
- Hariiroowwan daldala kaarboonii kan akka REDD+ qophaa'aa jiraachuu
- Hawaasni iddoowwan hambaalee aadaa ni kunuunsuu
- Abbootii qabeenyaa mootummaa fi dhuunfaa iddoowwan banannanaa naannoo kibba dhiha biyyaatti babal'achaa jiraachuu

Strategies / Tooftaalee/Tarsiimoo

The implementation of the following strategies was identified during the stakeholder workshops as being particularly important for achieving this principle:

- Preparing and enforcing land use planning;
- Strengthening land tenure and resource ownership security;
- Assessing and developing cultural and natural heritage sites in a participatory manner;
- Institutionalizing participatory resource governance;
- Creating awareness and support by local people for the development of a bio-economy;
- Publicizing the potential of the landscape to tourists;
- Establishing carbon trading schemes and landscape certification for its green development;
- Developing policies and strategies for the management of ecotourism sites.

Qajeelfama kana galmaan ga`uuf hojiileen armaan gadii kunniin yoo hojjeta-man galma ga`uu akka danda`u yeroo waltajjii akka qooda fudhattootni adda baasaniiru:

- Karoora itti fayyadama lafaa qopheessuu fi hojiirra oolchuu;
- Qabiyyee lafaa fi wabii abbaa qabeenyummaa cimsuu;
- Iddoowwan hambaalee aadaa fi uumamaa haala hirmaachisaa ta`een madaaluu fi misoomsuu;
- Bulchiinsa qabeenyaa hirmaachisaa ta`e bifa dhaabbata giddugaleessa godhate taasisuu;
- Hubannoo fi deeggarsa ummata naannootiin guddina diinagdeen uumama irratti hundaa`e uumuu;
- Dandeettii teessuma lafaa abbootii qabeenyaaf beeksisuu;
- Misooma magariisaa isaaf skiimota daldala kaarboonii fi mirkaneessa lafa diriirsuu;
- Hariiroo (schemes) daldala kaarboonii fi mirkaneessa qabiyyee lafa misooma magariisaatiif diriirsuu;
- Imaammataa fi tarsiimoowwan guddina iddoo daawwannaa naannoo/ikootu-urizimii qopheessuu.

Degree of stakeholders' agreement and consistency with scientific findings / Sadarkaa waliigaltee qooda fudhattootaa fi argannoo saayinsii waliin

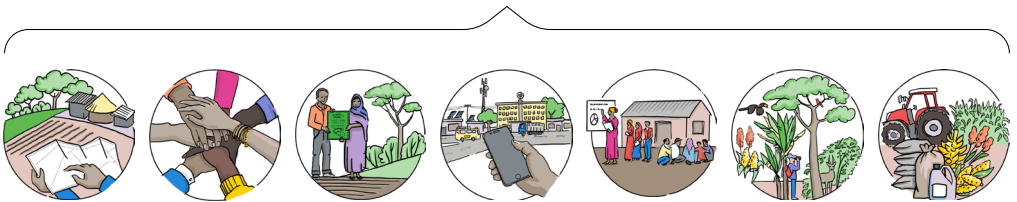
Stakeholders agreed on the benefits of preserving heritage sites and developing the bioeconomy. Diverse benefits of the bioeconomy in general, as well as the many values of trees on farmland specifically have been demonstrated in previous research (Shumi et al., 2019a).

Qooda fudhattoonni faayidaa iddoowwan hambaakuun kunuunsuu fi dinagdee qabeenya uumamaa irratti hundaa`e misoomsuu irratti waliigalaniiru. Akka waliigalaatti faayidaawwan adda addaa dinagdee qabeenya uumamaa irratti hundaa`e irraa argamu, akkasumas bu`aawwan mukkeen lafa qonnaa hedduun irratti qorannoowwan kanaan duraatii agarsiifamaniiru (Shumi fi kkf, 2019a).

Interactions with other principles / Hariiroo qajeelfamoota biroo waliin qabu

The preservation and development of cultural and natural heritage sites for ecotourism depends on strategic land use planning and enforcement (Principle 1), participatory, decentralized and context-specific governance and institutions, including local and traditional institutions (Principle 6), as well as on land tenure security for communal land (Principle 7). Infrastructure development (Principle 8) and awareness of local communities (Principle 9) can support the establishment of a bioeconomy. Ecotourism as part of a local bioeconomy can in turn support environmental conservation (Principle 2), and provide additional sources of income, which, together with sustainable agricultural development, can enhance food security (Principle 3).

Kunuunsi fi misoomni iddoowwan hambaalee aadaa fi uumamaa daawwannaa naannoo/ ikootuurizimii karoora itti fayyadama lafaa tarsiimoo fi raawwachiisummaa isaa irratti hundaa'a (qajeelfama 1), bulchiinsi fi dhaabbileen waloo, bulchiinsi giddugalees-saa kan haala dhaabbilee fi aadaa naannoo giddugala godhate (qajeelfama 6), akkasumas mirkaneessa qabiyyee qabeenyummaa lafa waliinii (hawaasaa) irratti hundaa'a (qajeelfama 7). Misoomni bu'uuraalee misoomaa (qajeelfama 8) fi hubannoon hawaasa naannoo (qajeelfama 9) dinagdee qabeenya uumamaa irratti hundeessuuf deeggaruu danda'a. Iddoowwan daawwannaa naannoo/ Ikootuurizimi akka qaama dinagdee qabeenya uumama naannootti dabaree isaatiin kunuunsa naannoo deeggaru danda'a (qajeelfama 2), akkasumas madda galii dabalataa kennuu danda'a, kunis misooma qonnaa itti fufiinsa qabu waliin ta'uun wabii nyaataa guddisuu danda'a (qajeelfama 3).





Principle 6 / Qajeelfama 6

Collaborative governance and institutions

Bulchiinsa hirmaachisaa fi dhaabbileewwan

Summary of this component of the shared vision / **Cuunfaa qajeelfamaa kan qaama mul'ata waloo kanaa**

By 2040, governance will be undertaken as follows:

- Governance of the landscape, including land resources, nature conservation, and development, is decentralized.
- Participatory management of the forest and the landscape as a whole is institutionalized.
- Institutions are plural, coordinated, responsive, and downwardly accountable.
- Institutional service provisions are holistic and integrated.
- Benefits from trade and natural resources conservation are shared equitably.
- Local stakeholders' capacity in material and technical skills, as well as their decision-making power are enhanced.
- Policies, strategies, and programs are strictly enforced, monitored, and evaluated.

Bara 2040tti bulchiinsi akka armaan gadiitti ni raawwatama:

- Haalli bulchiinsa teessuma lafaa kunuunsa qabeenya lafaa, kunuunsafi guddinni qabeenya uumamaa bulchiinsa giddugaleessatiin ta'a.
- Hoggansi hirmaachisaan bosonaa fi akka waliigalaatti teessuma lafaatti ni hundeeffama.
- Dhaabbileen heddummina, qindoomina, deebii hatattamaa kennanii fi itti gaafatamummaa qabani ta'u.
- Kenniinsi tajaajila dhaabbilee kan walii dalaganii fi walitti hidhaman ta'u.
- Faayidaan daldala fi kunuunsa qabeenya uumamaa irraa argamu haqaan qoodama.
- Dandeettiin qooda fudhattoota naannoo meeshaa fi ogummaadhan, akkasumas dandeettiin murtee kennuu isaanii ni guddata.
- Imaammattoonni, tarsiimoon, fi sagantaaleen ciminaan kan raawwatamu, hordofamu, fi madaalamu ta'u.

Description of the principle / Ibsa qajeelfamichaa

By 2040, the governance system is collaborative, and institutions appropriately match the complexity of social and ecological characteristics of the landscape. A decentralized governance system, coordinated institutions, as well as suitable policies and strategies are institutionalized in the management of the landscape and land resources. The five key characteristics of the governance system are: First, governance of the landscape and natural resources is decentralized. Along with formal public organizations, local people and their institutions actively participate in landscape and natural resource management, and equitably share benefits generated from the landscape. Second, the number and diversity of stakeholders, including governmental, non-governmental, community-based, and private organizations, has increased in the landscape. These organizations are connected through networks, with clear responsibilities and mandates, and their services match the local social development and conservation demand. Third, the capacity of local and frontline kebele-level organizations and institutions is enhanced. This is reflected in increased human resources, financial and technical skills, and further training opportunities provided to local workers. Fourth, local informal institutions such as Dabo, Dado, Diddaro, and Yakuto are recognized, upheld, and contribute to the development and conservation of the landscape. Fifth, problems of bad governance such as corruption, nepotism, inefficiency, and lack of meritocracy are reduced through a system of strong accountability and merit-based assignment of bureaucracy.

Bara 2040tti sirni bulchiinsa waloo dhaabbileen garagaraa amala hawaasaa fi naannoo teessuma lafaa haala sirrii ta'een walsimsiisu. Sirni bulchiinsa giddugaleessaa, dhaabbileen qindoomina qaban, imaamatnii fi tarsiimoon mijatoo ta'an bulchiinsa teessuma lafaa fi qabeenya lafaa keessatti dhaabbata ta'u. Amaloonni ijoo shanan sirna bulchiinsaa: Tokkoffaa, bulchiinsi teessuma lafaa fi qabeenya uumamaa giddugaleessa ta'een dhaabbilee mootummaa idilee waliin, namoota naannoo fi dhaabbileen isaanii waliin bulchiinsa teessuma lafaa fi qabeenya uumamaa irratti dammaqinaan hirmaatu, akkasuma faayidaa teessuma lafaa irraa argamu haqaan qooddatu. Lammaffaa, dhaabbilee mootummaa, miti mootummaa, hawaasa fi dhuunfaa; baay'inaa fi garaagarummaa qooda fudhattoota isaanii waliin haala teessuma lafaa keessatti ni baay'atu. Dhaabbileen kunneen karaa marsariitiin kan walitti hidhaman fi itti gaafatamummaa fi aangoo ifa ta'e kan qabu akkasuma, tajaajilli isaanii fedhii misooma hawaasaa fi kunuunsa naannoo wajjin kan walsimudha. Sadaffaa, dandeettiin jaarmiyaalee fi dhaabbilee sadarkaa gandaa haga naannoo adda durummaan cimuu. Kunis humna namaa dabaluu, dandeettii maallaqaa fi ogummaa, fi carraa leenjii dabalataa hojjettoota naannootii kennamu keessatti calaqqisa. Afraffaa, dhaabbileen aadda naannoo kan akka Daaboo, Daadoo, Didaaroo, fi Yaakutoo beekamtii argatan, ni kabajamu. Kunis, guddinaa fi kunuunsa teessuma lafa kanaatif gumaacha kan godhan ta'uu ibsameera. Shanaffaa, rakkoolee bulchiinsa badaa kan akka malaammaltummaa, firummaan tajaajiluu, gahumsa dhabuu fi hanqina hooggansa raawwii isaatin aangessuu (meritocracy) sirna itti gaafatamummaa cimaa fi gahumsa raawwachiisummaa qabu irratti hundaa'ee hir'ifama.

Current barriers and opportunities / Hudhaalee fi carraawwan yeroo ammaa

Barriers / Hudhaalee

- Linear and top-down governance and decision-making system
- Political instability and frequent restructuring of institutions hinder coordination and institutional fit to the local social-ecological system
- Weak capacity of local people and local level public institutions
- Increasingly poor governance, including corruption and lack of meritocracy
- Absence of a clear land use plan, and lack of clear responsibility sharing and enforcement

- Sirna bulchiinsa kallattii tokkoo fi gubbaarraa gara gadiitti murtee kennuu
- Tasgabii dhabuun siyaasaa fi irra deddeebiin gurmaa'uun dhaabbilee - qindoominaa fi sirna dhaabbilee hawaas-naannoo dadhabsiisuu
- Dandeettii namoota naannoo fi dhaabbilee mootummaa sadarkaa naannoo laafaa ta'uu
- Rakkoon bulchiinsa gaarii fi malaammaltummaan dabalaa dhufuu
- Karoorri itti fayyadama lafaa ifa ta'e jiraachuu dhabuu, akkasuma itti gaafatamummaa fi raawwachiisummaa ifa ta'e qoddachuu dhabuu

Opportunities / Carraawwan

- Local informal institutions are currently embedded within the community and contribute to the development and conservation of resources
- Woreda and zonal level organizations have educated people capable of supporting the transformation of the governance system
- Participatory Forest Management is already practiced in parts of the landscape

- Dhaabbileen aadaa hawaas-naannoo yeroo ammaa hawaasa keessa seenanii misoomaa fi kunuunsa qabeenyaaf gumaacha gochuu
- Dhaabbileen sadarkaa godinaa fi aanaa namoota jijjiirama sirna bulchiinsa jijjiiruu danda'an barsiisaniiru
- Hoggansi bosonaa hirmaachisaa ta'e kanaan dura kutaalee teessuma lafaa garagaraa keessatti shaakalameera.

Strategies / Tooftaalee/Tarsiimoo

The implementation of the following strategies was identified during the stakeholder workshops as being particularly important for achieving this principle:

- Decentralizing governance structures and administration;
- Designing and implementing capacity-building programs that empower local actors at the kebele and woreda levels, including regular training of experts and proper staffing of local institutions;
- Ensuring public institutional structural consistency, stability and coordination that is appropriate for the local social-ecological system;
- Establishing good governance and a system of clear responsibilities and accountability, including enacting stricter punishments for corruption, nepotism, favouritism, and wastage;
- Enforcing policies and strategies at the local level, including participatory monitoring and evaluation structures, empowerment of local implementers, strengthened programmes and project follow-up, monitoring and evaluation, compliance to development planning, rules, regulations, and agreements, and modernization of progress reporting (including digitalization);
- Strengthening local informal institutions and formally recognizing their roles in local development (e.g. Dabo and Diddaro), conflict management (e.g. religious institutions), and nature conservation (e.g. Wahbub as a participatory forest management institution);
- Facilitating linkages between research, extension, policy, and farmers through strengthening Agricultural Development Partnership Linkage Advisory Council (ADPLAC), Farmers Research Group (FRG), and fostering linkages with NGOs and market institutions;
- Ensuring equal access to institutional entitlements, including information and advisory services.

Qajeelfama kana galmaan ga`uuf hojiileen armaan gadii kunniin yoo hojjeta-man galma ga`uu akka danda`u yeroo waltajjii akka qooda fudhattootni adda baasaniiru:

- Caasaa bulchiinsaa fi bulchiinsa giddu galeessa godhachuu;
- Sagantaalee ijaarsa dandeettii sadarkaa gandaa fi aanaatti qooda fudhattoota biyya keessaa humneessan kanneen akka leenjii idilee ogeeyyii fi hojjetootaa qopheessuu fi hojiirra oolchuu;
- caasaa dhaabbilee mootummaa wal simsiisuu, tasgabii fi qindoomina sirna hawaas-naannoo sanaaf mijatu mirkaneessuu;
- Bulchiinsa gaarii fi sirna itti gaafatamummaa ifa ta'e diriirsuu, malaammaltummaa, firummaa, loogii, fi qisaasama irratti adabbii cimaa tumachuu;

- Imaammattootaa fi tarsiimoowwan sadarkaa naannootti hojiirra oolchuu, caasaa hordoffii fi madaallii hirmaachisaa, raawwattoota naannoo humneessuu, hordoffii sagantaa fi pirojektii cimsuu, hordoffii fi madaallii, karoorra misoomaa, dambii, fi waliigalteewwan kabajuu fi adeemsa ammayyeessuu;
- Dhaabbilee aadaa hawaas-naannoo kan misoomaf waliin hojjetan (fkn Daboo fi Diddaroo), waldhabdee hiikuu (fkn dhaabbilee amantii), fi kunuunsa qabeenya uumamaa (fkn Wahbub akka dhaabbata bulchiinsa bosona hirmaachisaatti) jiran cimsuu fi gahee isaan misooma naannoo keessatti qaban sirnaan beekuu;
- Mana Maree Gorsaa Hariiroo Waloo Misooma Qonnaa (MGHWMQ), Garee Qorannoo Qonnaan Bultootaa (GQQB) cimsuun, akkasumas dhaabbilee miti mootummaa fi gabaa waliin walitti dhufeenya uumuudhaan hariiroo qorannoo saayinsaawaa, ekisteenshinii qonnaa, imaammata fi qonnaan bultoota gidduu jiru haala mijeessuu;
- Odeeffannoo dabalatee mirga dhaabbilee walqixa akka argatan gochuu.

Degree of stakeholders' agreement and consistency with scientific findings / Sadarkaa waliigaltee qooda fudhattootaa fi argannoo saayinsii waliin

There was full consensus among stakeholders on this particular principle of the vision. It is also consistent with scientifically grounded recommendations regarding governance and the institutional system. For instance, Jiren et al. (2018; 2021) found that structural governance problems and inconsistencies, and process-related challenges posed key problems for the harmonious integration of food security and conservation. Consistent with this principle, these previous studies suggested a need for improvements in governance structures and processes. The benefits of collaborative governance to tackle complex sustainability challenges were further emphasised by Bergsten et al. (2019). Finally, policies that explicitly consider equity issues (Brück et al., 2022), for example by giving an equal voice to women and men (Manlosa et al., 2019c), can make an important contribution to sustainability.

Qajeelfama kana irratti qooda fudhattoota gidduutti waliigaltee guutuu ture. Akkasumas bulchiinsa fi sirna dhaabbilee ilaalchisee yaada saayinsii irratti hundaa'e waliin kan walsimudha. Fakkeenyaaf, Jiren fi kkf. (2018; 2021) fi kkf rakkooleen wal simuu dhabuu fi adeemsi walqabataa hintaane fi ciccitaa ta'e wabii midhaan nyaataa mirkan-eessuu dhabuu fi qabeenya uumamaa kunuunsarratti rakkoo cimaa ta'uu argateera. Qajeelfama kanaan walsimuun qorannoowwan kanaan duraa kun caasaa fi adeemsa bulchiinsa irratti fooyya'iinsi akka barbaachisu yaada dhiyeessan. Faayidaan bulchiinsa

waloo; qormaata walxaxaa fi yeroo dheeraa furuuf akka gargaaru qorannoo (Bergsten fi kkf. 2019) kanaan ibsameera. Dhumarratti, imaammattoonni dhimma walqixxummaa ifatti ilaalan (Brück fi kkf, 2022), fakkeenyaaf dubartootaa fi dhiirotaaf sagalee walqixa kennuudhaan (Manlosa fi kkf, 2019c), itti fufiinsaan gumaacha guddaa gochuu danda’u.

Interactions with other principles / Hariiroo qajeelfamoota biroo waliin qabu

Establishing participatory, decentralized and context-specific governance and institutions, including local and traditional institutions, is key to achieving all other principles. It is the foundation for effective and efficient use of land (Principles 1, 7), for environmental conservation (Principle 2), agriculture (Principle 3), restoration (Principle 4) and ecotourism (Principle 5), and supports the development of infrastructure and technology in the landscape (Principle 8). Engaging local communities (Principle 9) helps to create participatory governance mechanisms and to recognize local informal institutions.

Dhaabbilee naannoo fi aadaa dabalatee bulchiinsa fi dhaabbilee hirmaachisaa, gid-dugaleessa fi haala naannoo irratti hundeessuun qajeelfamoota biroo hunda galmaan ga’uuf furtoodha. Lafa bu’a qabeessaa fi gahumsaan itti fayyadamuuf bu’uura (qajeelfama 1, 7), kunuunsa naannoo (qajeelfama 2), qonnaa (qajeelfama 3), deebisanii dhaabuu (qajeelfama 4) fi iddoowwan daawwannaa naannoo/ikootuurizimii (qajeelfama 5), akkasumas guddina bu’uuraalee misoomaa fi teknooloojiin qabu ni deeggara (qajeelfama 8). Hawaasa naannoo hirmaachisuun (qajeelfama 9) mala bulchiinsa waloo uumuu fi dhaabbilee aadaa hawaas-naannoof beekamtii kennuuf gargaara.







Principle 7 / Qajeelfama 7

Improved land tenure security

Wabii abbaa qabeenyummaa lafaa fooyya`e

Summary of this component of the shared vision / **Cuunfaa qajeelfamaa kan qaama mul'ata waloo kanaa**

By 2040, land tenure security will be ensured as follows:

- Farmers have complete ownership of their land, including to use, lease, and bequest land.
- Land ownership is properly delineated, registered and a certificate is provided to the owner.
- Land owned by a farming family involves equal rights for husband and wife.
- The owner has the right to choose how the land is used and has full ownership of the products grown on the land.

Bara 2040tti wabiin mirga abbaa qabeenyummaa lafaa haala armaan ga-diitiin raawwatama:

- Qonnaan bultoonni lafa isaanii fayyadamuu, liizii, fi dhaalchisuuf abbummaa guutuu ni qabaatu.
- Abbummaan lafaa sirnaan saramee, galmaa'ee fi ragaan abbaa qa-beenyaaf ni kennama.
- Lafa maatii qonnaan bulaatin haammatame keessatti abbaa manaa fi haati manaa mirga wal qixa qabatu.
- Abbaan lafaa lafti akkamitti akka fayyadamu filachuuf mirga kan qabuu fi oomisha lafa irratti biqilu irratti abbummaa guutuu kan qabu dha.

Description of the principle / Ibsa qajeelfamichaa

By 2040, smallholder farmers have full ownership rights over their land. Individually-owned, rural land is demarcated, boundaries are locally known, and registered in the official registry. Land tenure security involves the right to use the rural land for agricultural and nature conservation, lease the land to farmers and investors, and transfer the land to heirs or family members as a gift. The owner of the land has the right to use the products grown on the land, including agricultural and forest products, and other profits generated through using the land. Land ownership includes the land currently held

by individual farmers to produce coffee, although this formally overlaps with the state forest. Notably, the right to sell land remains prohibited to avoid long-term social and economic problems. Enforcement of land tenure security and its provisions is strong. As a result, no land owner fears eviction from their holding without compensation proportional to the economic and social value of land.

Bara 2040tti qonnaan bultoonni lafa xixiqqaa isaanii irratti mirga abbummaa guutuu qabu. Lafti dhuunfaa baadiyyaa kan daangeffamee fi seeran galmaa`ee beekamuudha. Seerri wabii qabiyyee lafaa abbaa lafichaatiif mirga qonnaaf itti fyyadamuu, qabeenyaa uumamaa kunuunsuu, qonnaan bulaatti fi qabaa qabeenyaatti kireeffachuu fi keennaadhaan miseensa maatii badhaasu mirga guutuu kennnaafi. Abbaan lafaa oomisha qonnaa fi bosona dabalatee oomishaalee lafa irratti biqilan, akkasumas bu`aa biroo lafa sanarraa fayyadamuuf mirga ni qaba. Abbummaan lafaa lafa yeroo ammaa qonnaan bultoonni dhuunfaa buna oomishuuf qaban kan haammatu fi bosona mootummaa waliin kan wal keessa jiruudha. Kan hubatamuu qabu rakkoo hawaasummaa fi dinagdee yeroo dheeraa akka hin mudanneef mirgi lafa gurguruu dhorkaadha. Raawwiin wabii qabiyyee lafaa fi dhoorkin isaa cimaadha. Kanarraa kan ka`e abbaan lafaa kamiyyuu beenyaa madaalawaa dinagdee fi hawaasummaa lafaa wajjin walmadaalu malee qabiyyee isaanii irraa buqqifamuu hin sodaatu.

Current barriers and opportunities / Hudhaalee fi carraawwan yeroo ammaa

Barriers / Hudhaalee

- Lack of clarity on the provisions and restrictions related to land ownership
- Weak enforcement of land entitlement
- Lack of proper land use planning and enforcement
- Gaps in land tenure policy regarding privately used land overlapping with state forest
- Fear of eviction based on arbitrary government demands
- Current land compensation is based on the value of the land 20 years ago, and there is a lack of adjustment to current conditions
- Involvement of local institutions in communal resource management remains weak

- Dhoorki fi daangeffamni abbummaa lafaa wajjin walqabatu ifa ta`uu dhabuu
- Raawwiin mirga lafaa lafaa ta`uu
- Karoora itti fayyadama lafaa sirrii ta`e qopheessuu fi raawwachiisuu dhabuu
- Qaawwa imaammata qabiyyee lafa dhuunfaa fi bosona mootummaa waliin wal qabatee jiru
- Sodaa fedhii malee mootummaan buqqifamuu

- Hanqinni beenyan lafaa ammaa jiru gatii lafaa waggoota 20 duraa irratti kan hundaa'e waan ta'eef haala amma jiruun walsimsiisuu
- Hirmaanaan dhaabbilee aadaa hawaas-naannoo bulchiinsa keessatti ammallee lafaa ta'uu

Opportunities / Carraawwan

- Land ownership demarcation, registration, and certification are in place
- Men and women have equal entitlements
- Existing policies support all key entitlements
- Abbummaa lafaa daangessuun, galmeessuuni, fi mirkaneessuun hojjetamaa jiraachuu
- Dhiiraa fi dubartiin mirga abbummaa walqixa qabaachuu
- Imaamattoonni jiran mirga ijoo hunda deeggaruuu

Strategies / Tooftaalee/Tarsiimoo

The implementation of the following strategies was identified during the stakeholder workshops as being particularly important for achieving this principle:

- Creating awareness about the rights that owners have over their land, including teaching communities about provisions and restrictions;
- Ensuring land tenure security and its enforcement, including all rights except the right to sell land;
- Establishing low-cost and locally compatible dispute management over land, including a hybrid mechanism involving local institutions and a formal system for resolving land disputes and conflicts arising from communal resource use;
- Establishing a forum for discussion between local people and formal administration, finding ways to resolve issues of land overlapping with state forest;
- Training and capacity building on the best use of land to ensure long-term sustainable outcomes;
- Recognizing local institutions such as traditional Abba lagaa, abbaa kaloo and religious-based institutions in the governance and management of land;
- Expanding alternative livelihood sources to overcome land shortages and reduce pressure on forested land.

Qajeelfama kana galmaan ga`uuf hojiileen armaan gadii kunniin yoo hojjeta-man galma ga`uu akka danda`u yeroo waltajjii akka qooda fudhattootni adda baasaniiru:

- Hawaasa waa'ee dhoorki fi daangaawwanii barsiisuu fi mirga abbootiin qa-beenyaa lafa isaanii irratti qaban irratti hubannoo uumuu;
- Mirga lafa gurguruu irraa kan hafe mirgoota hunda dabalatee abbummaa qa-biyyee lafaa fi raawwii isaa mirkaneessuu;
- Lafa irratti bulchiinsa falmii baasii xiqqaa fi naannoo waliin walsimu hundeessu-un, mala walmakaa dhaabbilee aadaa hawaas-naannoo hirmaachisu fi haalasirni falmii lafaa fi waldhabdee itti fayyadama qabeenya hawaasaa irraa maddu furuu;
- Waltajjii marii hawaasa naannoo fi bulchiinsa idilee gidduutti taasifamu hun-deessuun, dhimmoota lafa bosona mootummaa waliin wal keessa jiran karaa itti furaman barbaaduu;
- Bu'aa yeroo dheeraa itti fufiinsa qabu mirkaneessuuf itti fayyadama lafaa haa-lan leenjii fi ijaarsa dandeettii kennuu;
- Dhaabbileen aadaa hawaas-naannoo kanneen akka Abbaa lagaa aadaa, abbaa kaloo fi dhaabbilee amantaa irratti hundaa'un bulchiinsa lafaa irratti beekamtii kennuu;
- Maddoota galii jireenya hawaasaa fooyyessan fayyadamuudhaan dhiibbaa bosonarra gahu hir`isuu.

Degree of stakeholders' agreement and consistency with scientific findings / Sadarkaa waliigaltee qooda fudhattootaa fi argannoo saayinsii waliin

Although this principle was agreed upon by many stakeholders, some stakeholders from the zonal administration preferred to also enact the right to sell land, because they believed that market-based mechanisms would lead to more efficient land allocation and utilization. Problems related to access to land, land tenure security, resource security, disputes over land ownership and entitlement, and land use-related problems such as “revocation of land from farmers if unused for three consecutive production seasons” were repeatedly uncovered in our previous research (Shumi et al., 2019a; Schultner et al., 2021). At the same time, provisions and entitlements over land, land registration, and the positive contributions of land certification were also identified in previous research (Jiren et al., 2018; Jiren et al., 2021).

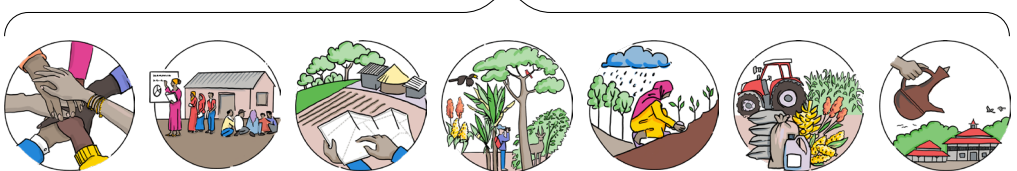
Qajeelfamni kun qooda fudhattoota hedduunn waliigaltee irra ga'anis, qooda fudhattoonni bulchiinsa godina irraa dhufan tokko tokko mirga lafa gurguruus labsuu filataniiru. Sababni

isaas mala gabaa irratti hundaa'en ramaddii fi itti fayyadama lafaa bu'a qabeessa fiduun akka danda`amu waan amananiif. Rakkoowwan hanqina lafaa, wabii qabiyyee lafaa, wabii abbaa qabeenyummaa, waldhabdee abbummaa fi mirga lafaa fi rakkoolee itti fayyadama lafaa wajjin walqabatee seerri akka "yeroo oomishaa sadii walitti aansuun yoo laficharratti hin oomishne qonnaan bulaa irraa fudhatamuu" qorannoo keenya kanaan duraa keessatti irra deddeebiin mul'ataniiru (Shumi fi kkf, 2019a; Schultner fi kkf, 2021). Kanuma waliin, dhoorki fi mirgi lafaa, galmeen lafaa, fi gumaacha mirkaneessaa lafaa irrattis qorannoowwan kanaan duraa keessatti adda baafamaniiru (Jiren fi kkf, 2018; Jiren fi kkf, 2021).

Interactions with other principles / Hariiroo qajeelfamoota biroo waliin qabu

Improving land tenure security in the landscape relies on governance and institutions with clear rules (Principle 6), and the awareness and engagement of local communities (Principle 9). Together with strategic land use planning and enforcement (Principle 1), improved land tenure security ensures that land is used efficiently and optimally for environmental conservation and restoration (Principles 2, 4), agricultural development (Principle 3), or establishing a bioeconomy based on heritage development and ecotourism (Principle 5).

Wabii qabiyyee lafaa teessuma lafaa keessatti fooyyessuun bulchiinsa fi dhaabbilee imaammata ifa ta'e qabani (qajeelfama 6) fi hubannoo fi hirmaannaa hawaasa naannoo (qajeelfama 9) irratti hirkata. Karoora itti fayyadama lafaa tarsiimoo fi raawwachiisummaa (qajeelfama 1) waliin ta'uun, wabiin qabiyyee lafaa yoo fooyya'e lafti kunuunsaa fi deebisanii dhaabuu naannoo (qajeelfama 2, 4), misooma qonnaa (qajeelfama 3), ykn diinagdee qabeenya uumama irratti irratti hundaa'e hundeessuuf gahumsaa fi haala gaariin akka itti fayyadamnu taasisa (qajeelfama 5).





Principle 8 / Qajeelfama 8

Infrastructure and technology development

Bu` uraalee misoomaa fi teeknooloojii guddisuu

Summary of this component of the shared vision / Cuunfaa qajeelfamaa kan qaama mul'ata waloo kanaa

By 2040, infrastructure and technology development will be undertaken as follows:

- Improved access to public infrastructures, technologies and social services, including health, road, electricity, and communication, facilitates social transformation, improves wellbeing and reduces pressure on natural resources.
- Market and communication infrastructure are developed and enhance equitable benefit sharing, which increases incomes and investment.
- Access to agricultural technologies increases land use efficiency, incomes, and reduces pressure on natural resources.

Bara 2040tti guddinni bu`uraalee misoomaa fi teeknooloojii haala armaan gadiitiin ni raawwatama:

- Fayyaa, daandii, ibsaa, fi qunnamtii dabalatee bu`uraalee misoomaa mootummaa, teeknooloojii fi tajaajila hawaasummaa fooyyessuun jijjii-rama hawaasummaa ni mijeessa, haala jireenya hawaasaa ni fooyyessa akkasumas dhiibbaa qabeenya uumamaa irra jirus ni hir'isa.
- Bu`uraaleen gabaa fi qunnamtiin yoo guddate faayidaa haqa qabeessa ta'e qoddachuufis ta'ee galii fi investimantiis ni dabala.
- Teeknooloojiwwan qonnaa yoo argaman itti fayyadamni lafaa ni cima, galii ni dabala akkasumas dhiibbaa qabeenya uumamaarraa ni hir'ata.

Description of the principle / Ibsa qajeelfamichaa

By 2040, access to improved public infrastructure in all kebeles supports the growth and development of society. Rural kebeles are connected through gravel roads, whereas woredas are connected through asphalt roads, by funds mobilized by the government and community. Similarly, rural electrification programs are supplied by the state, community, and private entrepreneurs from alternative energy sources, including conventional and solar power sources. Other social service infrastructures, such as health services, accessibility to clean water, irrigation facilities, adult education centers, and primary and secondary schools at the kebele level, have expanded. Moreover, in terms

of market infrastructure, mobile networks and telecommunication services enhance trade, and strengthen market linkages and equitable benefits sharing. Also, small-scale agri-processing industries improve the incomes of local people.

Bara 2040tti bu'uuraalee misoomaa mootummaa ganda hunda keessatti yoo fooyya'an guddinaa fi misooma hawaasaa ni deeggara. Gandoonni baadiyyaa daandii cirraachaan kan walitti hidhame yoo ta'u, aanaan daandii asfaaltiitiin kunis kan hojjetame maallaqa mootummaan ramadee fi hawaasarraa walitti qabameen ta'uu ibsameera. Haaluma walfakkaatuun sagantaaleen lbsaa baadiyyaa madda anniisaa idilee fi aduu kan mootummaa irraa, hawaasaa fi abbootii qabeenyaa irraa dhuunfaadhaan dhiyaateedha. Bu'uuraaleen tajaajila hawaasummaa biroon, kanneen akka tajaajila fayyaa, dhiyeessii bishaan qulqulluu, dhaabbilee jallsii, wiirtuuwwan barnoota ga'eessotaa, fi manneen barnootaa sadarkaa tokkoffaa fi lammaffaa sadarkaa gandatti argaman babal'ataniiru. Kana malees, gama bu'uuraalee gabaatiin, neetworkiin moobaayilaa fi tajaajilli telekoomii daldala ni guddisa, akkasumas walitti hidhamiinsa gabaa fi qoodinsa faayidaa haqa qabeessa ta'e ni cimsa. Akkasumas, indaastiriiwwan oomisha qonna xixiqqaa qopheessan galii namoota naannoo fooyyessu.

Current barriers and opportunities / Hudhaalee fi carraawwan yeroo ammaa

Barriers / Hudhaalee

- Poor infrastructural development
- Limited financial capacity
- Poor input and product markets
- Lack of off-farm employment opportunities
- Illiteracy and health problems

- Bu'uuraalee misoomaa dadhaboo
- Humna maallaqaa xiqqaa
- Gabaa galtee fi oomishaa dadhaboo
- Carraa hojii qonnaan alaa ta'e dhabuu
- Rakkoo barchuu dhabuu fi fayyaa

Opportunities / Carraawwan

- Improved technology affinity
- Growing cooperative marketing and output prices
- Encouraging initiatives to address infrastructural problems
- Small industries are utilizing smallholders' outputs

- Walqabsiisni teeknooloojii fooyya'aan jiraachuu
- Gatiin gabaa waloo fi oomishaa guddachuu
- Rakkoo bu'uuraalee misoomaa furuuf jalqabbii jiraachuu
- Industiriiwwan xixiqqaa oomisha qonnaan bul'toota xixiqqaa fayyadamaa jiraachuu

Strategies / Tooftaalee/Tarsiimoo

The implementation of the following strategies was identified during the stakeholder workshops as being particularly important for achieving this principle:

- Improving infrastructure, including electricity, roads, and other public infrastructures;
- Expanding adult education programs, home economics, financial and rural transformation programs;
- Improving saving habits through the expansion of microfinance, bank institutions, and agricultural credit services;
- Enhancing rural electrification via alternative energy sources, including conventional and solar;
- Expanding and improving access to healthcare;
- Expanding accessibility of clean water and irrigation facilities;
- Expanding small-scale agri-processing industries;
- Improving market access;
- Expanding technology, including communication networks and accessibility to mass media.

Qajeelfama kana galmaan ga`uuf hojiileen armaan gadii kunniin yoo hojjetaman galma ga`uu akka danda`u yeroo waltajjii akka qooda fudhattootni adda baasaniiru:

- Bu'uuraalee misoomaa kan akka humna ibsaa, daandii, fi bu'uuraalee mootummaa biroo fooyyessuu;
- Sagantaa barnoota ga'eessotaa, dinagdee manaa, sagantaalee jijjiirama faayinaansii fi baadiyyaa babal'isuu;
- Amala qusannaa fooyyessuu karaa maayikiroo faayinaansii, dhaabbilee baankii, fi tajaajila liqii qonnaatiin babal'isuu;
- Humna ibsaa baadiyyaa karaa madda anniisaa filannoo barame fi aduutin guddisuu;
- Qabeenya eegumsa fayyaa babal'isuu fi fooyyessuu;
- Dhiyeessii bishaan qulqulluu fi dhaabbilee jallsii babal'isuu;
- Industirii qonnaa xixiqqaa babal'isuu;
- Dhiyeessii gabaa fooyyessuu;
- Teeknooloojii, kan akka networkii qunnamtii fi dhiyeessii miidiyaalee hawaasaa babal'isuu.

Degree of stakeholders' agreement and consistency with scientific findings / Sadarkaa waliigaltee qooda fudhattootaa fi argannoo saayinsii waliin

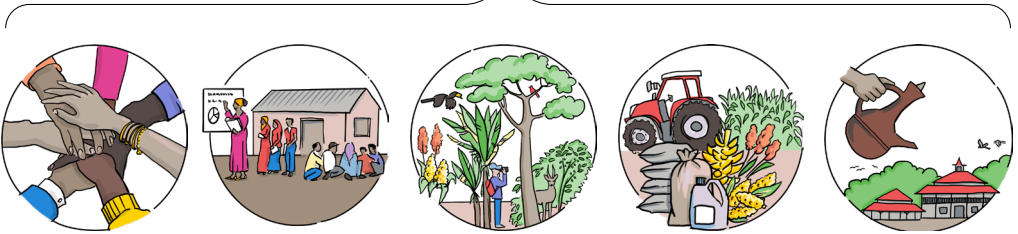
All stakeholders agreed on this principle. Previous research in the study area has also highlighted that infrastructure and technology play important roles in the development of agriculture and food security (Jiren et al., 2018; Manlosa et al., 2019a).

Qooda fudhattoonni hundi qajeelfama kana irratti waliigalaniiru. Qorannoon kanaan dura naannoo kanatti gaggeeffames bu'uuraaleen misoomaa fi teeknooloojiin misooma qonnaa fi wabii nyaataa keessatti gahee olaanaa akka qaban ibseera (Jiren fi kkf, 2018; Manlosa fi kkf, 2019a).

Interactions with other principles / Hariiroo qajeelfamoota biroo waliin qabu

Developing infrastructure and technology depends on functioning governance mechanisms and institutions (Principle 6) and the support by local communities for new technologies (Principle 9). Improved infrastructure and technology can help to reduce pressure on natural resources (Principle 2), improve agricultural productivity (Principle 3), and establish tourism in the landscape (Principle 5).

Bu'uuraalee misoomaa fi teeknooloojii guddisuun mala bulchiinsaa fi dhaabbilee jirani (qajeelfama 6) fi deeggarsa hawaasni naannoo teeknooloojii haaraa (qajeelfama 9) irratti qabu irratti hundaa'a. Bu'uuraaleen misoomaa fi teeknooloojiin fooyya'aan dhiibbaa qabeenya uumamaa irratti dhufu hir'isuuf (qajeelfama 2ffaa), oomishummaa qonnaa fooyyessuuf (qajeelfama 3), akkasumas daawwannaa naannoo teessuma lafaa keessatti hundeessuu danda'a (qajeelfama 5).





Principle 9 / Qajeelfama 9

Raising community awareness and engagement

Hubannoo fi hirmaannaa hawaasaa guddisuu

Summary of this component of the shared vision / **Cuunfaa qajeelfamaa kan qaama mul'ata waloo kanaa**

By 2040, community engagement will be undertaken as follows:

- Increased community awareness leads to efficient land use, conservation, and sustainable development.
- Traditional rural organizations maintain social cohesion.
- Multi-purpose cooperatives, youth and women associations enable equitable benefit sharing.
- Traditional systems such as 'abbaa lagaa' enhance natural resource management and equitable use, and reduce conflict through enforcing locally grounded conflict resolution mechanisms.
- Farmers are educated and market-oriented.
- Cultural and heritages sites within the landscape are formally protected.
- Social consensus cooperatives and collective action mechanisms are enhanced.
- Dependency on remittances is reduced.

Bara 2040tti hirmaannaan hawaasaa akka armaan gadiitti ni raawwatama:

- Hubannoo hawaasaa dabaluuhaan itti fayyadama lafaa gahumsa qabu, kunuunsa, fi misooma itti fufiinsa qabu argamsiisa.
- Dhaabbileen baadiyyaa aadaa hawaa-naannoo walitti hidhuun eega.
- Waldaaleen hojii gamtaa kaayyoo hedduu qaban, waldaaleen dargagootaa fi dubartootaa faayidaa haqaan akka qooddatan taasisa.
- Sirnoonni aadaa hawaa-naannoo kanneen akka 'abbaa lagaa' kunuunsa qabeenya uumamaa fi itti fayyadama haqa qabeessa ta'een guddisu, akkasumas mala walldhabdee hiikuu aadaa hawaa-naannoo bu'uura godhate ta'a.
- Qonnaan bultootni kan baratani fi haala gabaa kan giddugaleeffatan ta'u.
- Iddoowwan aadaa fi hambaa lafa keessa jiran sirnaan eegamu.
- Waldaaleen hojii gamtaa waliigaltee hawaasummaa fi mala tarkaanfii waloo ni cimsa.
- Hirkatummaa maallaqaa alarraa ergamu ni hir'ata.

Description of the principle / Ibsa qajeelfamichaa

By 2040, society has been transformed with regards to knowledge, skills, attitudes, and awareness, and local stakeholders actively manage the development and conservation of the landscape. Most people are educated, healthy, and committed to change. Social organizations such as cooperatives, youth and women associations, unions, and rural local organizations, including informal institutions for self-help and nature conservation, have expanded and ensure equitable benefit sharing, as well as reduced power and benefit capture by local elites. People are empowered and actively participate in the governance and administration of key localities. The development of infrastructure, market linkages, and expansion of tourism provides access to modern forms of living. Changes in attitudes towards work, expansion of non-farm alternative livelihoods, and the development of industries expand opportunities and hence lead to a transformation of livelihoods. Rising opportunities and incomes reduce youth out-migration to Arab countries, and people no longer strongly depend on remittances. There is an expansion of insurance and social protection programs.

Bara 2040tti hawaasni beekumsa, dandeettii, ilaalcha, fi hubannoo jijjiiramee kan dhufu yoo ta'u, qooda fudhattoonni naannoo misoomaa fi kunuunsa teessuma lafaa dammaqinaan eegu. Namoonni baay'een kan baratan, fayyaa kan qabanii fi jijjiiramaaf kan of kennanii dha. Dhaabbileen hawaasummaa kanneen akka waldaalee hojii gamtaa, waldaalee dargaggootaa fi dubartootaa fi dhaabbileen naannoo baadiyyaa, dhaabbilee aadaa hawaa-naannoo of gargaarsa fi kunuunsa qabeenya uumamaa dabalatee, faayidaa haqa qabeessa qooddachuu kan mirkaneessu, akkasumas aangoo fi faayidaa namoota muraasaa naannootiin qabamu hir'isuu danda'u. Namoonni aangoo argachuuf geggeessummaa fi bulchiinsa naannoolee keessatti dammaqinaan hirmaatu. Misoomni bu'uuraalee misoomaa, walitti hidhamiinsi gabaa, fi babal'inni daawwannaa (tourism) ammayyaa`uun haala jireenya hawaasaa ni jijjiira. Carraa fi galiin dabalaa yoo dhufu godaansa dargaggoonni gara biyyoota Arabaa godhan ni hir`ata. Kana booda namoonni maallaqa ergamu irratti baayyee hin hirkatan.

Current barriers and opportunities / Hudhaalee fi carraawwan yeroo ammaa

Barriers / Hudhaalee

- Low social cohesion and high individualism
- Low motivation to work within the community
- Addiction to stimulants is high
- Lack of job opportunities and alternative livelihoods
- Resistance to change in the society
- Increasing population size

- Limited exposure to opportunities outside the landscape
 - Poverty and food insecurity
 - Limited access to social and public infrastructure
 - Social mal-practices and conflicts over resources are increasing
- Walitti hidhamiinsi hawaasaa gadi aanaa fi qophummaa babal`achuu
 - Hawaasa keessatti hojjechuuf kaka`umsa gadi aanaa qabaachuu
 - Miidhan Araadaa baay`eechuu
 - Carraa hojii fi jireenya filannoo biraa dhabuu
 - Jijjiirama hawaasaa haaraa dhufu mormuu
 - Baay`inni ummataa dabaluu
 - Carraa teessuma lafaatin ala jiruuf saaxilamuu
 - Hiyyummaa fi hanqina nyaataa
 - Bu`uuraalee hawaasaa fi mootummaa argachuun dhabuu
 - Gochaalee badaa hawaasummaa fi waldhabdeen qabeenya irratti uumamu dabalaa jira

Opportunities / Carraawwan

- Improved technology affinity
 - Growing cooperative marketing
 - Increasing awareness and commitment to change
 - Local traditional institutions, respect for religious tolerance, and collective action are already present
- Walhidhamiinsii teeknooloojii fooyya`uu
 - Hariiron gabaa guddachuu
 - Hubannoo fi kutannoo jijjiiramaaf qaban dabaluu
 - Dhaabbileen aadaa hawaa-naannoo, wal danda`uu amantii fi tarkaanfii waloo cimuu

Strategies / Tooftaalee/Tarsiimoo

The implementation of the following strategies was identified during the stakeholder workshops as being particularly important for achieving this principle:

- Expanding multi-purpose and specialized cooperatives to strengthen social cohesion and economic empowerment;
- Expanding youth mobilization, women associations, and job creation around non-farm enterprises, including cottage industries;
- Increasing social development programs and interventions, such as training, entrepreneurship skill development, and capacity building to improve attitudes towards work;

- Designing and implementing social wellbeing programmes, including a revolving fund for youth employment;
- Improving access to microfinance and agricultural credit, with low interest and long repayment periods;
- Discouraging outmigration and remittance dependency through small-scale industrial expansion;
- Expanding targeted awareness and capacity-building programs to marginalized groups;
- Strengthening culture and heritage of the land through marketing;
- Voluntary resettling of landless people to sparsely populated parts of the landscape;
- Strengthening and empowering traditional institutions through recognition and integration into development planning;
- Educating adults on entrepreneurship skills, family planning, youth education, home economics, and self-improvement.



Qajeelfama kana galmaan ga`uuf hojiileen armaan gadii kunniin yoo hojjeta-man galma ga`uu akka danda`u yeroo waltajjii akka qooda fudhattootni adda baasaniiru:

- Waldaa hojii gamtaa kaayyoo hedduu fi addaa qabu babal'isuun walitti hidhamiinsa hawaasummaa fi dinagdee cimsuu;
- Sochii dargaggoota, waldaalee dubartootaa, fi dhaabbilee qonnaa hin taane carraa hojii uumuu fi industirii naannoo babal'isuu;
- Sagantaalee fi hojiilee misooma hawaasaa, kanneen akka leenjii, ogummaa abbaa qabeenyaa ta`uu, fi ijaarsa dandeettii dabaludhaan ilaalcha hojiif qaban fooyyessuu;
- Galii irra deddeebiin argamu kan hojii dargaggootaa ta`u fi sagantaalee fayyaa hawaasaa qopheessuu fi hojiirra oolchuu;
- Maayikiroo fayinaansii fi liqii qonnaa dhala xiqqaa fi yeroon kaffaltii dheeraatiin argachuu fooyyessuu;
- Babal'ina industirii xixiqqaatiin uumudhaa godaansaa fi hirkattummaa haamlee namaa cabsu hir`isuu;
- Sagantaalee hubannoo fi ijaarsa dandeettii xiyyeeffannoo qaban gareewwan gurmaa`aniif babal'isuu;
- Aadaa fi hambaa lafaa gabaadhan cimsuu;
- Namoota lafa hin qabne fedhii isaaniitiin gara kutaalee lafa baay'ina ummataa xiqqaa qabuutti qubsiisuu;
- Dhaabbileen aadaa beekamtii kennuu fi misooma keessatti hariiroo qaban cimsuu fi humneessuu;
- Ga'eessota ogummaa qabeenyaa argachuutin leenjisuu, karoora maatii, barnoota dargaggootaa, dinagdee manaa, fi of-fooyyessuu irratti barsiisuu.

Degree of stakeholders' agreement and consistency with scientific findings / Sadarkaa waliigaltee qooda fudhattootaa fi argannoo saayinsii waliin

Stakeholders agreed that raising community awareness and fostering greater community engagement was important for sustainable development. These views are consistent with earlier research in the study area, for example regarding issues of gender equity (Manlosa et al., 2019c) and family planning (Rodrigues et al., 2022), as well as the importance of agency and social relations for sustainable livelihoods (Manlosa et al., 2019b; Manlosa et al., 2019a; Manlosa, 2022).

Qooda fudhattoonni hubannoo fi hirmaannaa hawaasaa guddisuun misooma itti fufiinsa qabuuf barbaachisaa ta'uu irratti waliigalaniiru. Ilaalchi kunniin qorannoowwan kaanaan dura naannoo kanatti gaggeeffaman waliin kan walsimu. Fakkeenyaaf dhimmoota walqixxummaa saalaa (Manlosa fi kkf, 2019c) fi karoora maatii ilaalchisee (Rodrigues fi kkf, 2022), akkasumas barbaachisummaan hariiroo ejensii fi hawaasaa jireenyaa walitti fufiinsa qabuu ka'eera (Manlosa fi kkf, 2019b; Manlosa fi kkf, 2019a; Manlosa, 2022).

Interactions with other principles / Hariiroo qajeelfamoota biroo waliin qabu

Awareness and engagement of local communities can support the development of participatory governance and institutions (Principle 6) as well as functioning land tenure security systems (Principle 7). The development of infrastructure (Principle 8) and of local heritage sites for tourism (Principle 5) rely fundamentally on the engagement and awareness of local people.

Hubannoo fi hirmaannaan hawaasa naannootiin bulchiinsa fi dhaabbileen waloo akka jiraatan gaodha (qajeelfama 6) kana malees sirna wabii qabiyyee lafaa hojiirra jiru (qajeelfama 7) deeggara. guddinni bu'uuraalee misoomaa (qajeelfama 8) fi hambaalee naannoo daawwannaaf (tourism) (qajeelfama 5) hirmaannaa fi hubannoo namoota naannoo irratti hirkata.







Principle 10 / Qajeelfama 10

Social and ecological transformation

Jijjiirama Hawaas-naannoo

Summary of this component of the shared vision / Cuunfaa qajeelfamaa kan qaama mul'ata waloo kanaa

By 2040, realizing the above nine principles leads to a sustainable transformation of the social-ecological system in Jimma zone:

- Development and conservation interventions by the state, non-state actors, and local people in agriculture, land management, and natural resource conservation account for sector interdependencies.
- Agricultural production and biodiversity conservation are integrated at the policy, strategy, and practices level.
- There is a noticeable improvement in livelihood conditions of local people, their food security, and biodiversity.
- Current trends of deforestation and degradation are reversed, and vegetation cover and wildlife habitats and populations are enhanced.
- Forest resources provide different types of ecosystem services, while trees are also integrated into farmland development.
- Agricultural intensification approaches are more and more replaced by organic means of land management.
- Implementation of green economy policies leads to social and ecological development.
- Collaborative governance and participation of local people in landscape management improve social awareness, local livelihoods, and the state of natural resources.
- Governance institutions and organizations integrate issues of social equity, food security, and biodiversity management into the strategies and practices in the landscape.
- Development planning, together with society, improves practices that facilitate social-ecological transformation.

Bara 2040tti qajeelfamoota saglan armaan olitti ibsaman dhugoomsudhaan godina Jimmaa keessatti jijjiirama hawaas-naannoo itti fufiinsa qabu fida:

- Giddu-galli misoomaa fi kunuunsaa mootummaa, qooda fudhattoota miti mootummaa fi qonnaan bultoota naannoo dhaabbileen bulchiinsa lafaa fi kunuunsa qabeenya uumamaa waliin akka hojjetaniif sababa ta'a.
- Omishni qonnaa fi kunuunsi heddummina lubbu qabeeyyii sadarkaa imaammataatti, tarsiimoo fi raawwiitti waliin hojjetu.

- Haalli jireenya namoota naannoo fi wabii nyaata isaanii akkasumas heddummina lubbu qabeeyyii irratti fooyya'iinsi ni mula`ata.
- Adeemsi yeroo ammaa bosona ciruu fi manca'uu duubatti deebi'eer, akkasumas uwwisni biqilootaa, bakki jireenyaa bineensota fi baay'inni bineensota bosonaa ni guddata.
- Qabeenyi bosonaa tajaajila sirnakoo gosa adda addaa kan kennu yoo ta'u, akkasumas mukkeen lafa qonnaa keessatti ni baay`atu.
- Malli qonnaa cimaa dhufuu isaatin kunuuns lafa mala orgaanikaatin bakka bu'aa dhufeera.
- Imaammata dinagdee magariisaa galmaan ga`uun guddina hawaas-naannoo fida.
- Teessuma lafaa keessatti bulchiinsi waloo fi hirmaannaan namoota naannoo bulchiinsa hubannoo hawaasaa, haala jireenya naannoo fi haala qabeenya uumamaa ni fooyyessuu.
- Waliitti dhufeenyi dhaabbileen bulchiinsaa fi waajjiraalee walqixxummaa hawaasaa eeguu, wabii nyaataa mirkaneessu fi bulchiinsi heddummina lubbu qabeeyyii tarsiimoo fi raawwii teessuma lafaa keessatti argamaniif-hariiroo uuma
- Karoorri misoomaa hirmaachisaan raawwii hojiilee jijjiirama hawaas-naannoo ni fooyyessa.

Description of the principle / Ibsa qajeelfamichaa

By 2040, the implementation of the above nine principles of the vision results in a social-ecological transformation of the landscape. This transformation is reflected in agricultural development, biodiversity conservation, and landscape management strategies, as well as in social and ecological system properties. Accordingly, intervention strategies in agricultural development and biodiversity conservation are sustainably integrated at different spatial scales, involving practices at the landscape scale, strategies at the regional scale, and policies at the national scale. Also, mainstreaming of green economy policies – such as organic agricultural inputs, diversified farming involving crops and livestock, sustaining multifunctional landscapes, diversified livelihood sources from agriculture as well as from a nature-based economy, sustainable utilization of ecosystem services – are key to achieving a social-ecological transformation in the landscape. Furthermore, governance institutions and policies integrate social equity, food security, and biodiversity management considerations into the strategies and practices used in the landscape. Interventions in the landscape match its social and ecological conditions, and research and technologies facilitate agricultural devel-

opment, while also improving biodiversity. As a result of these interventions over the coming 20 years, by 2040, the current social-ecological system will be transformed into a system with improved agricultural production and food security, progress in social equity, and enhanced biodiversity conservation.

Qajeelfamoonni mul'ataa saglan armaan olii kunniin hojiirra yoo oolan Bara 2040tti teessuma lafaa keessatti jijjiirama hawaas-naannoo ni fidu. Jijjiiramni kun misooma qonnaa, kunuunsa heddummina lubbu qabeeyyii fi tooftaalee bulchiinsa lafa, akkasumas qabeenya sirna hawaas-naannoo keessatti calaqqisa. Haaluma kanaan, tooftaaleen fooyya`iinsa misooma qonnaa fi kunuunsa heddummina lubbu qabeeyyii sadarkaa adda addaatti haala itti fufiinsa qabuun walitti makamu, kunis sadarkaa iddoo adda addaa isaan jiraniitti, hirmaannaa waloo sadarkaa teessuma lafaatti, tarsiimoo sadarkaa naannootti, fi seera sadarkaa biyyaatti kan hammatuudha. Akkasumas, imaammata dinagdee magariisaa hundeessuu – kanneen akka galtee qonnaa Orgaanikaa, qonna wal-keessaa kan oomisha midhaanii fi horii qabu, teessuma lafaa faayidaa hedduu fi itti fufiinsa qabu, madda galii adda addaa qonna irraa argamu akkasumas guddina dinagdee uumamaa irratti hundaa'e, itti fayyadama sirnakoo naannoo itti fufiinsa qabu – galmaan ga'uun hojiiwwan ijoo jijjiirama hawaas-naannoo teessuma lafa kanaa keessatti mul'atu. Kana malees, dhaabbileen bulchiinsaa fi imaammattoonni walqixxummaa hawaasummaa, wabii nyaataa, fi ilaalcha bulchiinsa heddummina lubbu qabeeyyii tarsiimoo fi gochaalee lafa keessatti fayyadaman keessatti walitti maku. Giddu-galli lafa keessatti taasifamu haala hawaasummaa fi ikoloojii isaa wajjin kan walsimu yoo ta'u, qorannoo fi teeknooloojiiwwan misooma qonnaa haala mijeessa, akkasumas heddummina lubbu qabeeyyii fooyyessa. Sababa gidduu-galumaawwan kanneeniin waggoota 20 dhufan keessatti, bara 2040tti sirni hawaasummaa-ikoloojii amma jiru gara sirna oomisha qonnaa fi wabii nyaataa fooyya'aa, walqixxummaa hawaasummaa, fi kunuunsa heddummina lubbu qabeeyyii fooyya'aa ta'etti ni jijjiirama.

Current barriers and opportunities / Hudhaalee fi carraawwan yeroo ammaa

Barriers / Hudhaalee

- Lack of integrated landscape development planning and intervention
- Excessive reliance on agriculture as a livelihood and associated farmland expansion
- Limited development of non-agriculture alternative livelihood sources and strategies
- Lack of sustainable land use planning and implementation
- Population growth
- Lack of awareness by local stakeholders regarding balanced growth and green economy
- Conflicting policies and their mismatch with local social-ecological conditions
- Deforestation
- Weak capacity of local people in sustainable resource use

- Teessuma lafaa keessatti hanqina waliin karoorsuu fi dursanii irratti hojjechuu
- Jijjiirama jireenyaa dandamachuuf qonnaa irratti hundaa`u fi babal`ina lafa qonnaa
- Maddi fi tooftaaleen jireenyaa qonnaa hojii qonnaa qofarratti kan dangeffame ta`uu
- Karoora fi raawwii itti fayyadama lafaa itti fufiinsa hin qabne
- Baay`ina ummataa
- Guddina madaalawaa fi dinagdee magariisaa ilaalchisee qooda fudhattoonni naannoo hubannoo dhabuu
- Imaammata wal-faallessuu fi haala hawaas-naannoo naannoo wajjin wal hin simne
- Bosona mancaasuu
- Dandeettii gadi aanaa namoonni naannoo qabeenya itti fufiinsa fayyadamuu irratti qaban

Opportunities / Carraawwan

- Some green economy policies are already present in the landscape (although the implementation deficit is high)
- Landscape resources are sufficient and suitable for balanced social and ecological development
- Practices of tree planting and soil and water conservation are increasingly undertaken
- The landscape is designated as a coffee and nature-based economic belt by the region
- Imaammanni diinagdee magariisaa muraasni teessuma lafaa keessa jirachuu (Galmaan ga`uumsi isaa hanqina guddaa qabaatus)
- Qabeenya teessuma lafaa keessa jiru guddina hawaasaa fi diinagdee madaalawaadhaaf ga`aa fi mijataa ta`uu
- Sosochiin muka dhaabu fi eegumsa biyyoof bishaanii babal`achaa jiraachuu
- Teessumni lafa naannichaa kunuunsa bunaa fi qabeenya uumamaa irratti kan hundaa`e ta`uu

Strategies / Tooftaalee/Tarsiimoo

The implementation of the following strategies was identified during the stakeholder workshops as being particularly important for achieving this principle:

- Expanding sustainable agricultural production strategies and practices;
- Expanding alternative livelihood sources;
- Raising local awareness through training and capacity building;
- Establishing participatory land use planning and implementation;
- Ensuring collaborative governance and policy fit with local conditions;
- Integrating social growth and ecological conservation goals in development interventions;
- Strengthening Research-Extension-Farmers linkages, including through empowering Farmers Research Groups.

Qajeelfama kana galmaan ga`uuf hojiileen armaan gadii kunniin yoo hojjeta-man galma ga`uu akka danda`u yeroo waltajjii akka qooda fudhattootni adda baasaniiru:

- Tarsiimoo fi hojmaata qonnaa itti fufiinsa qabu babal'isuu;
- Filannoowwan madda jireenyaa ta'an babal'isuu;
- Leenjii fi ijaarsa dandeettiitiin hubannoo naannoo guddisuu;
- Karooraa fi raawwii itti fayyadama lafaa hirmaachisaa ta'e diriirsuu;
- Bulchiinsa waloo fi imaammata bahu haala naannoo giddu galeessa taasisuu;
- Guddina hawaasaa fi kunuunsa qabeenya uumamaa hojii hojjetamu keessatti wal simsiisuu;
- Garee qorannoo qonnaan qultootaa walitti dhufeenya qorannoo saayinsii, Ik-steenshinii fi qonnaan bulaan walitti fiduun cimsuu.

Degree of stakeholders' agreement and consistency with scientific findings / Sadarkaa waliigaltee qooda fudhattootaa fi argannoo saayinsii waliin

Stakeholders agreed on the need to achieve a fundamental social-ecological transformation within the study area. The integration of social and ecological aspects of sustainable development has been widely documented in previous research, including by the research team who prepared this booklet (Fischer et al., 2017; Hanspach et al., 2017; Wittman et al., 2017).

Qooda fudhattoonni barbaachisummaa jijjiirama bu'uuraa hawaas-naannoo galmaan ga-huun barbaachisaa ta'uu irratti waliigalaniiru. Guddina itti fufiinsa qabu keessatti haala hawaasaa fi naannoo walitti fiduun barbaachisaa akka ta'e qorannoowwan kanaan duraa galmeeffameera, dabalataan kanaan duraa garee qorannoo kitaaba xiqqaa kana qopheesse dabalatee (Fischer fi kkf, 2017; Hanspach fi kkf, 2017; Wittman fi kkf, 2017) ni raggaasisu.

Interactions with other principles / Hariiroo qajeelfamoota biroo waliin qabu

Social-ecological transformation is the result of interactions among the previous nine principles.

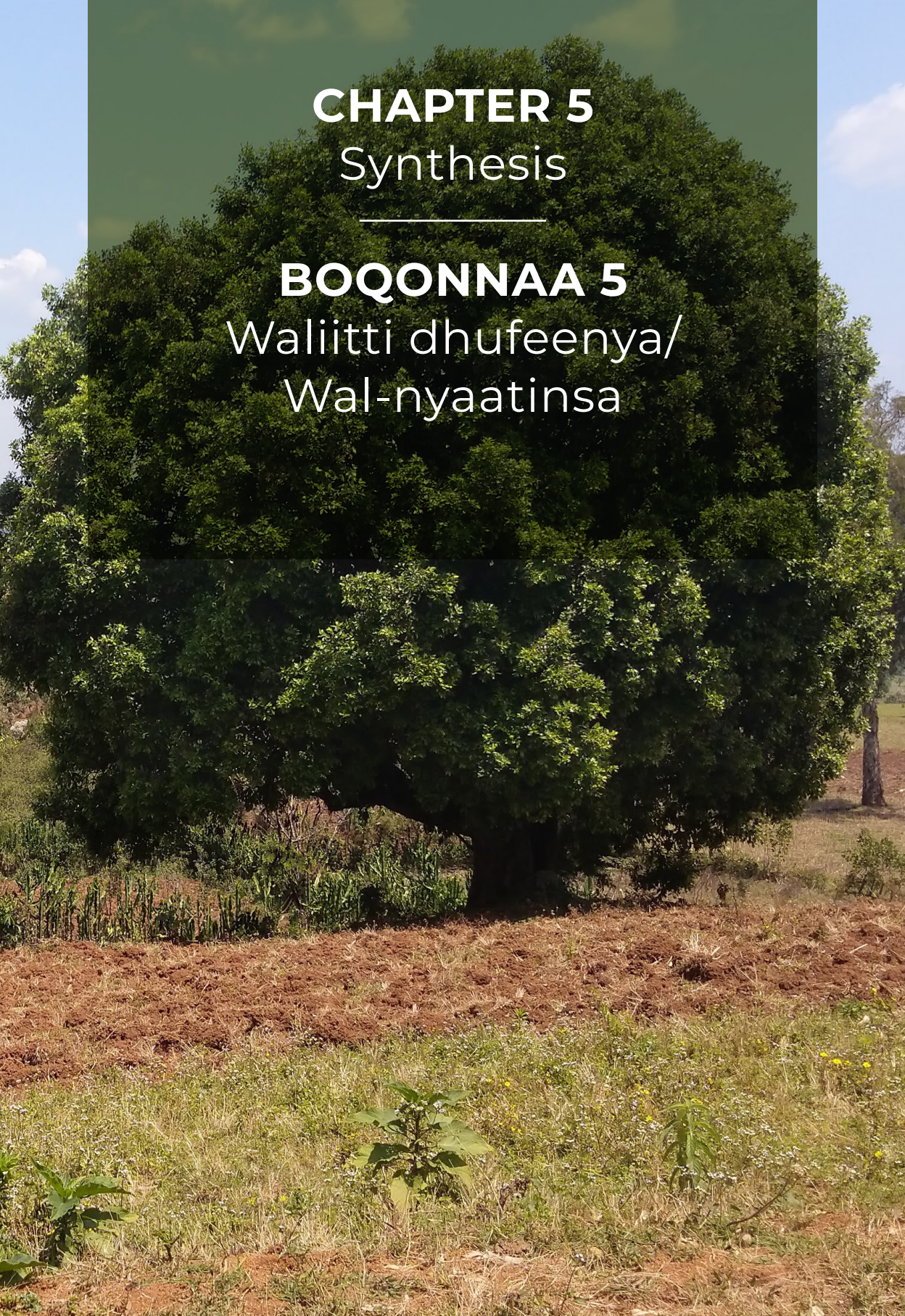
Jijjiiramni hawaas-naannoo bu'aa walitti dhufeenya qajeelfamoot bu'uuraa sagal armaan olii gidduu jiruuti.

CHAPTER 5

Synthesis

BOQONNAA 5

Waliitti dhufeenya/ Wal-nyaatinsa



Synthesis / Waliitti dhufeenya/Wal-nyaatinsa

In 2021 and 2022, we conducted participatory workshops to help stakeholders to collectively envision a desirable future for landscapes within Jimma zone in 2040. Workshop participants included farmers (men and women, poor and wealthy, old and young), public servants and policy makers from kebele, woreda and zonal levels.

Bara 2021 fi 2022tti teessuma lafa godina Jimmaa keessatti egeree hawwataa haga bara 2040tti ta`uu danda`u waliin mari`achuuf qooda fudhattoota waliin waltajjii marii hirmaachisaa gaggeessinee turre. Hirmaattonni waltajjii marii; qonnaan bultoota (dhiiraa fi dubartoota, harka qalleeyyii fi sooreyyii, maanguddootaa fi dargaggoota), hojjettoota mootummaa fi seera baaftota sadarkaa gandaa, aanaa fi godinaa turan.

For the future of their landscape, stakeholders developed a common vision, which we synthesized via 10 key principles: strategic, efficient and sustainable land use planning; environmental conservation and the establishment of a biosphere reserve in the landscape; improved food security; restoration of degraded land, mostly through tree plantation; development of ecotourism and biocultural heritage sites, which provide alternative income sources; participatory, decentralized and context-specific governance and institutions; improved land tenure security; improved access to public infrastructure, technologies and social services; increased community awareness and maintenance of traditional institutions; and social and ecological transformation.

Egeree teessuma lafaatif qooda fudhattoonni mul`ata waloo kan qopheessan yoo ta`u, kanas karaa qajeelfamoota ijoo 10niin walitti fidameeti: tarsiimoo, gahumsa fi itti fufiin-sa itti fayyadama lafaatiin; kunuunsa naannoo fi iddoo lubbu qabeeyyiin daangeffamanii itti kunuunfamaniin; wabii nyaataa fooyya`aa ta`een; lafa manca`e deebisanii dhaabuudhaan (irra caalaa karaa biqiloota dhaabuu); iddoo daawwannaa naannoof oolan hundeessuu fi hambaalee uumamaan naannoo keessa jiran kanneen madda galii dabalataa ta`an eegun; bulchiinsa fi dhaabbilee haala naannoo giddu galeessa godhateen, wabii abbummaa qabiyyee lafaa fooyyessuu, dhiyeessi bu`uraalee misooma hawaasaa fooyyessuu, teeknooloojiiwwanii fi tajaajila hawaasummaa argachuu; hubannoo hawaasaa fi kunuunsa aadaa kan naannoo guddisuun fi jijjiirama hawaas-naannoo kanneen jedhamaniin kan walitti fidameedha.

These ten principles do not stand alone, but depend on and interact with each other. For example, strategic, efficient and sustainable land use planning depends on participatory, decentralized and context-specific governance and institutions, as well as on land tenure security. At the same time, land use planning is essential for ensuring that land is used efficiently and appropriately for nature conservation and restoration, agricultural development or heritage development and ecotourism.

Qajeelfamoonni kurnan kunniin walirratti kan hirkatanii fi kan wal-qunnamanidha. Fakkeenyaaf: tarsiimoon, gahumsi fi haalli itti fufiinsi karoora itti fayyadama lafaa - haala bulchiinsa waloo, giddugeessatii, haala qabatamaa naannoo fi wabii abbummaa qabiyyee lafaa mirkaneessuu irratti hundaa'a. Haaluma wal fakkaatuun karoorri itti fayyadama lafaa - kunuunsa qabeenya uumamaa fi qabeenya uumamaa bade deebisuu keessatti shoora guddaa qaba, akkasumas misooma qonnaa ykn misooma hambaalee fi iddoowwan daawwannaa naannoon uumamaa itti kunuunfaman eeguu keessatti faayidaa qabu.

In the workshops, stakeholders also discussed key transformative strategies to achieve the transition towards the desired future landscape. Cross-cutting themes reflected in these strategies were capacity building, participation and the important role of local traditions. Capacity building, for example, in the form of technical training, education programs, financial or human resources, for both farmers and policy makers, can support land use planning, the introduction of new technologies, or agricultural production. Participation of diverse stakeholders, especially local farmers, in land use planning, the establishment of new institutions, forest management, and resource governance, can help to ensure equitable sharing of the costs and benefits of these transformative changes. Many parts of the vision rely on strengthening traditional local knowledge and institutions, for example with regards to farming, conflict management, and sustainable land use.

Waltajjii marii sanarratti, qooda fudhattoonni tooftaalee jijjiiramaa ijoo ta'an kan ce'umsa gara egeree barbaadamutti taasifamu galmaan ga'uuf gargaaran irrattis mari'atanii-ru. Ijaarsi dandeettii, hirmaannaa fi duudhaaleen naannoo tooftaalee kanneen keessaa isaan ijoodha. Fakkeenyaaf: Ijaarsi dandeettii bifa leenjii ogummaatiin, sagantaa



barnootaatiin, maallaqaan ykn humna namaatiin qonnaan bulootnifi seera baastotni/tumtootn yoo deeggaraman karoora itti fayyadama lafaabaasuu keessatti, teeknooloojiiwwan haaraa hojiirra oolchuuf ykn oomisha qonnaa dabaluu fargaara. Hirmaannaan qooda fudhattoonni adda addaa, keessumaayyuu qonnaan bultoonni naannoo, karoora itti fayyadama lafaabaasuu keessatti, hundeeffama dhaabbilee haaraa keessatti, eegumsa bosona, fi bulchiinsa qabeenya irratti yoo hirmaatan baasii fi faayidaa jijjiirama kanaa haqaan akka qoodamu gargaaruu danda'a. Kutaaleen mul'ata kanaa hedduun beekumsa aadaa naannoo fi dhaabbilee cimsuu irratti hirkatu. Fkn: haala qonnaa, wal-dhabdee furuu fi itti fayyadama lafaa itti fufiinsa qabu qabaachuu keessatti.

Although stakeholders mostly agreed on the key principles of the formulated vision, some disagreements remained, mainly with regard to agricultural development and land tenure security. For example, some stakeholders were more in favour of conventional agricultural intensification, whereas others envisioned agroecological, low-external input farming for the landscape. With regards to land tenure security, some stakeholders of the zonal administration were in favour of the right to sell land, in contrast to other stakeholders who wanted to prohibit this to avoid undesirable long-term social and economic consequences.

Qooda fudhattoonni irra caalaan isaanii qajeelfamoota ijoo mul'ata kaayyeefaman irratti waliigalanii jiru, garuu iddoo tokko tokkotti kan wal mormisiises jira; irra caalaa haala misooma qonnaa fi wabii abbuummaa qabiyyee lafaa ilaalchisee. Fakkeenyaaf, qooda fudhattoonni tokko tokko caalaatti qonna barama cimsuu kan deggeran yoo ta'u, kaan ammoo qonna xaa'oo keemicaalaa fi galtee biraa qonnaaf ta'u yaadaniiru. Wabii abbuummaa qabiyyee lafaa ilaalchisee qooda fudhattoonni godinaa tokko tokko mirga lafa gurguruu kan deeggaran yoo ta'u, kanneen biroo miidhan hawaasummaa fi dinagdee yeroo dheeraa akka hin uumamneef kana gurgurtaa lafaa mormuudhan faallaa ta'uu ibsameera.

Formulating a vision for a desirable future landscape is only the beginning. We hope that this booklet can be a starting point for tangible steps towards actually achieving the collectively formulated vision in the landscape.

Egeree mijataa teessuma lafaatif mul'ata waloo horachuun jalqabbiidha. Kitaabni xiqqaan kun tarkaanfiiwwan qabatamaa mu'l'ata waloo kanniin galmaan ga'uuf ka'umsa ta'uu akka danda'u abdii qabna.

Farmers and policy makers at different levels can use the 10 principles and the strategies presented in this booklet as inspiration and guidance. Establishing and maintaining participatory, decentralized and context-specific governance and institutions, including local informal institutions, is key to achieving all other principles. They serve as the foundation for effective and efficient governance and use of the land for different purposes, and support the equitable development of infrastructure and technology in the landscape.

Qonnaan bultoonni fi seera baastonni/tumtoonni sadarkaa adda addaatti qajeelfamoota 10`nan kanneeni fi tooftalee dhiyaatan akka kaka`umsaa fi qajeelfamaatti fayyadamuu ni danda`u. Dhaabbilee hawaasummaa naannoo dabalatee bulchiinsa giddugaleessaa fi aadaa/haala naannoo irratti hundaa`e akkasumas hirmaachisaa ta`e hundeessu fi eeguudhaan qajeelfamoota kanneen galmaan ga`uun hojii murteessadha. Kunis, bulchiinsa bu`a qabeessaa fi gahumsa qabuu kan kaayyoo itti fayyadama lafaa faayidaa adda addaatiif bu`uura ta`u, akkasumas bu`uuraalee misoomaa baay`isuu fi teeknooloojii haqa qabeessa hundeessuf nu gargaaru.



List of workshop participants / Tarree hirmaattota marii

Workshop / Marii	Stakeholder groups and organizations / Garee fi dhaabbilee qooda fudhattootaa	Administration level / Sadarkaa bulchiinsaa
Single Session 1	Poor farmers representatives Model farmers representatives Womens representatives Elders representatives Muslim clerks Kebele health extension Elementary school teacher Youth representatives	Dusta Badiya kebele
Qeenxee Kutaa 1a	Bakka bu`oota Qonnaan bulootaa harka qalleessaa Bakka bu`oota Qonnaan bulootaa moodeelaa Bakka bu`aa dubartootaa Bakka bu`oota jaarsolii Bakka bu`oota Muslimaa Eksteenshinii fayyaa gandaa Barsiisaa mana barumsaa sadarkaa tokkoffaa Bakka bu`oota dargaggootaa	Ganda Dustaa Baadiyyaa
Single Session 2	Poor farmers representatives Model farmers representatives Womens representatives Elders representatives Youth representatives Development agent	Kaso Badeyi kebele
Qeenxee Kutaa 2	Bakka bu`oota qonnaan bulootaa harka qalleeyyii Bakka bu`oota qonnaan bulootaa fakkeenya ta'an Bakka bu`oota dubartootaa Bakka bu`oota jaarsolii Bakka bu`oota dargaggootaa Bakka bu`aa hojjettoota misoomaa	Ganda Kasoo Baddeeyyii
Single Session 3	Poor farmers representatives Model farmers representatives Womens representative Elders representatives Gare and zone leaders Muslim clerks Elementary teachers Youth representatives	Kuda Kufi kebele

Workshop / Marii	Stakeholder groups and organizations / Garee fi dhaabbilee qooda fudhattootaa	Administration level / Sadarkaa bulchiinsaa
Qeenxee Kutaa 3	Bakka bu`oota Qonnaan bultoota harka qalleessaa Bakka bu`oota Qonnaan bultoota moodeelaa Bakka bu`aa dubartootaa Bakka bu`oota jaarsolii Bakka bu`oota Muslimaa Barsiisaa mana barumsaa sadarkaa tokkoffaa Bakka bu`oota dargaggootaa	Ganda Qudaa Qufii
Single Session 4	Poor farmers representatives Model farmers representatives Womens representative Elders representatives Youth representatives Elementary school teachers	Difo Mani kebele
Qeenxee Kutaa 4	Bakka bu`oota qonnaan bultoota harka qalleeyyii Bakka bu`oota qonnaan bultootaa moodeelaa Bakka bu`aa dubartootaa Bakka bu`oota jaarsolii Bakka bu`oota dargaggootaa Barsiisota sadarkaa tokkoffaa	Ganda Difoo Maanii
Single Session 5	Coffee, Tea, and Spices Production and Marketing Bureau of Agriculture and Natural Resources Land Administration and Use office Oromia Forest and Wildlife Enterprise Livestock and Fish Development Irrigation Development Authority Women and Children's Affairs office Environment, Forest, and Climate Change Disaster Prevention and Preparedness Cooperative Promotion Agency Administration office Peace and Security office	Gumay woreda

Workshop / Marii	Stakeholder groups and organizations / Garee fi dhaabbilee qooda fudhattootaa	Administration level / Sadarkaa bulchiinsaa
Qeenxee Kutaa 5a	Omishaa fi Gabaa Buna, Shaayii, fi Mi'eessituu Biiroo Qonnaa fi Qabeenya Uumamaa Oromiyaa Waajjira Bulchiinsaaf fi Itti Fayyadama Lafaa Intarpiraayizii Bosonaa fi Bineensota Bosonaa Oromiyaa Misooma Beeyladaaf fi Qurxummii Abbaa Taayitaa Misooma Jallisii Waajjira Dhimma Dubartootaa fi Daa'immanii Jijjiirama Qilleensaa, Eegumsa Naannoo fi Bosona Qophii fi Ittisaa Balaa Ejensii babal'ina Waldaa Hojii Gamtaa Waajjira Bulchiinsaa Waajjira bulchiinsaf fi Nageenyaa	Aanaa Gumaay
Single Session 6	Coffee, Tea, and Spices Production and Marketing Bureau of Agriculture and Natural Resources – Natural resources Bureau of Agriculture and Natural Resources – Crops Land Administration and Use office Irrigation Development Authority Oromia Forest and Wildlife Enterprise Administration office Peace and Security office Japan International Development Agency Livestock and Fish Development Women and Children's Affairs office Micro and Enterprise Institute Environment, Forest, and Climate Change Disaster Prevention and Preparedness Cooperative Promotion Agency	Gera worda

Workshop / Marii	Stakeholder groups and organizations / Garee fi dhaabbilee qooda fudhattootaa	Administration level / Sadarkaa bulchiinsaa
Qeenxee Kutaa 6	<p>Omishaa fi Gabaa Buna, Shaayii, fi Mi'eessituu Biiroo Qonnaa fi Qabeenya Uumamaa—Qabeenya Uumamaa</p> <p>Biiroo Qonnaa fi Qabeenya Uumamaa Oromiyaa—Midhaan</p> <p>Waajjira Bulchiinsaaf fi Itti Fayyadama Lafaa Abbaa Taayitaa Misooma Jallsii</p> <p>Intarpiraayizii Bosonaa fi Bineensota Bosonaa Oromiyaa</p> <p>Waajjira Bulchiinsaa</p> <p>Waajjira Bulchiinsaf Nageenyaa</p> <p>Ejensii Misooma 'Japan International'</p> <p>Misooma Beeyladaa fi Qurxummii</p> <p>Waajjira Dhimma Dubartootaa fi Daa'immanii</p> <p>IMX</p> <p>Jijjiirama Qilleensaa, Eegumsa Naannoo fi Bosonaa</p> <p>Qophii fi Ittisaa Balaa</p> <p>Ejensii babal`ina Waldaa Hojii Gamtaa</p>	Aanaa Geeraa
Single Session 7	<p>Bureau of Agriculture and Natural Resources –Natural resources</p> <p>Bureau of Agriculture and Natural Resources – Crops</p> <p>Bureau of Agriculture and Natural Resources –Extension service</p> <p>Trade office</p> <p>Market Development office</p> <p>Land Administration and Use office</p> <p>Irrigation Development Authority</p> <p>Administration office</p> <p>Oromia Forest and Wildlife Enterprise</p> <p>Livestock and Fish Development</p> <p>Women and Children's Affairs office</p> <p>Micro and Enterprise Institute</p> <p>Environment, Forest, and Climate Change</p> <p>Disaster Prevention and Preparedness</p> <p>Cooperative Promotion Agency</p> <p>Peace and Security office</p>	Setema woreda

Workshop / Marii	Stakeholder groups and organizations / Garee fi dhaabbilee qooda fudhattootaa	Administration level / Sadarkaa bulchiinsaa
Qeenxee Kutaa 7	Biiroo Qonnaa fi Qabeenya Uumamaa—Qabeenya Uumamaa Biiroo Qonnaa fi Qabeenya Uumamaa—Midhaan Biiroo Qonnaa fi Qabeenya Uumamaa—Tajaajila ekisteenshinii Waajjira Daldalaa Waajjira Misooma Gabaa Waajjira Bulchiinsaa fi Itti Fayyadama Lafaa Abbaa Taayitaa Misooma Jallisii Waajjira Bulchiinsaa Intarpiraayizii Bosonaa fi Bineensota Bosonaa Oromiyaa Misooma Beeyladaa fi Qurxummii Waajjira Dhimma Dubartootaa fi Daa'immanii IMX Jijjiirama Qilleensaa,Eegumsa Naannoo fi Bosonaa Qophii fi Ittisaa Balaa Ejensii babal`ina Waldaa Hojii Gamtaa Waajjira Bulchiinsaf Nageenyaa	Aanaa Saxxammaa
Single Session 8	Bureau of Agriculture and Natural Resources –Extension Bureau of Agriculture and Natural Resources – NRM Bureau of Agriculture and Natural Resources – Crops GIZ Sustainable Land Management Investment office Environment, Forest, and Climate Change office Coffee, Tea, and Spices Production and Marketing Livestock and Fish Development Land Administration and Use Institute of Biodiversity Conservation—Jimma Botanic Garden Disaster Prevention and Preparedness Irrigation Development Authority Micro and Small Enterprise Development Agency Oromia Credit and Finance Share Company Jimma Forestry Research Agricultural Mechanization Research Centre Trade and Market Development office Cooperative Promotion Agency Oromia Forest and Wildlife Enterprise	Jimma zone

Workshop / Marii	Stakeholder groups and organizations / Garee fi dhaabbilee qooda fudhattootaa	Administration level / Sadarkaa bulchiinsaa
Qeenxee Kutaa 8	Biiroo Qonnaa fi Qabeenya Uumamaa—Eksteenshinii Biiroo Qonnaa fi Qabeenya Uumamaa—Qabeenya uumamaa Biiroo Qonnaa fi Qabeenya Uumamaa—Midhaan 'GIZ' Bulchiinsa Lafaa Itti Fufiinsa Qabu Waajjira invastimantii Waajjira Jijjiirama Qilleensaa, Eegumsa Naannoo fi Bosonaa Omishaa fi Gabaa Buna, Shaayii, fi Mi'eessituu Misooma Beeyladaa fi Qurxummii Bulchiinsaa fi Itti Fayyadama Lafaa Inistitiyuutii Eegumsa Heddumina Lubbu Qabeeyyii—Jimmaa Qophii fi Ittisaa Balaa Abbaa Taayitaa Misooma Jallisii IMX Dhaabbata Aksiyoona Liqii fi Faayinaansii Oromiyaa Qorannoo Bosonaa Jimmaa Giddugala Qorannoo Makaanaayizeeshinii Qonnaa Waajjira Daldalaa fi Misooma Gabaa Ejensii babal`ina Waldaa Hojii Gamtaa Intarpiraayizii Bosonaa fi Bineensota Bosonaa Oromiyaa	Godina Jimmaa

Workshop / Marii	Stakeholder groups and organizations / Garee fi dhaabbilee qooda fudhattootaa	Administration level / Sadarkaa bulchiinsaa
Joint workshop	<p>Kebeles Poor farmers representatives Model farmers representatives Elders representatives Kebele manager Development Agent Womens representative Kebele manager</p> <p>Woredas Coffee, Tea, and Spices Production and Marketing Bureau of Agriculture and Natural Resources Land Administration and Use office Oromia Forest and Wildlife Enterprise Livestock and Fish Development Environment, Forest, and Climate Change Livestock and Fish Development Environment, Forest, and Climate Change Disaster Prevention and Preparedness Cooperative Promotion Agency</p> <p>Jimma zone Institute of Biodiversity Conservation—Jimma Botanic Garden Cooperative Promotion Agency Oromia Forest and Wildlife Enterprise Bureau of Agriculture and Natural Resources Bureau of Agriculture and Natural Resources—NRM GIZ Sustainable Land Management Investment office Coffee, Tea, and Spices Production and Marketing Livestock and Fish Development Land Administration and Use Disaster Prevention and Preparedness Environment, Forest, and Climate Change office</p>	Joint

Workshop / Marii	Stakeholder groups and organizations / Garee fi dhaabbilee qooda fudhattootaa	Administration level / Sadarkaa bulchiinsaa
Marii waliini	<p>Gandoota Bakka bu’oota qonnaan bul’oota harka qalleeyyii Bakka bu’oota qonnaan bul’ootaa moodeelaa Bakka bu’oota jaarsolii Hogganaa gandaa Bakka bu’aa hojjetaa misoomaa Bakka buutuu dubartootaa Hogganaa gandaa</p> <p>Aanaa Omishaa fi Gabaa Buna, Shaayii, fi Mi’eessituu Biiroo Qonnaa fi Qabeenya Uumamaa Waajjira Bulchiinsaa fi Itti Fayyadama Lafaa Intarpiraayizii Bosonaa fi Bineensota Bosona Oromiyaa Misooma Beeyladaa fi Qurxummii Jijjiirama Qilleensaa, Eegumsa Naannoo, fi Bosona Misooma Beeyladaa fi Qurxummii Qophii fi Ittisaa Balaa Ejensii babal`ina Waldaa Hojii Gamtaa</p> <p>Godina Jimmaa Inistiitiyuutii Eegumsa Hedduumina Lubbu Qabeeyyii— Jimmaa Ejensii babal`ina Waldaa Hojii Gamtaa Intarpiraayizii Bosonaa fi Bineensota Bosonaa Biiroo Qonnaa fi Qabeenya Uumamaa Biiroo Qonnaa fi Qabeenya Uumamaa—Qabeenya uumamaa GIZ - Bulchiinsa Lafaa Itti Fufiinsa Qabu Waajjira investimantii Omishaa fi Gabaa Buna, Shaayii, fi Mi’eessituu Misooma Beeyladaa fi Qurxummii Bulchiinsaa fi Itti Fayyadama Lafaa Qophii fi Ittisaa Balaa Waajjira Jijjiirama Qilleensaa, Eegumsa Naannoo, fi Bosonaa</p>	Waliin

References / Wabiiwwan

- Bergsten, A., Jiren, T. S., Leventon, J., Dorresteijn, I., Schultner, J., and Fischer, J. (2019). Identifying governance gaps among interlinked sustainability challenges. *Environ Sci Policy* 91, 27–38. doi: 10.1016/j.envsci.2018.10.007
- Brück, M., Abson, D. J., Fischer, J., and Schultner, J. (2022). Broadening the scope of ecosystem services research: Disaggregation as a powerful concept for sustainable natural resource management. *Ecosyst. Serv.* 53, 101399. doi: 10.1016/j.ecoser.2021.101399
- Duguma, D. W., Schultner, J., Abson, D. J., and Fischer, J. (2022). From stories to maps: translating participatory scenario narratives into spatially explicit information. *E&S* 27. doi: 10.5751/ES-13200-270213
- Fischer, J., Abson, D. J., Bergsten, A., French Collier, N., Dorresteijn, I., Hanspach, J., et al. (2017). Reframing the Food-Biodiversity Challenge. *Trends Ecol Evol* 32, 335–345. doi: 10.1016/j.tree.2017.02.009
- Fischer, J., Senbeta, F., Dorresteijn, I., Hanspach, J., Jiren, T. S., and Schultner, J. (2018). *Envisioning the future for southwestern Ethiopia*. Sofia, Bulgaria: Pensoft Publishers.
- Hanspach, J., Abson, D. J., French Collier, N., Dorresteijn, I., Schultner, J., and Fischer, J. (2017). From trade-offs to synergies in food security and biodiversity conservation. *Front Ecol Environ* 15, 489–494. doi: 10.1002/fee.1632
- Jiren, T. S., Dorresteijn, I., Hanspach, J., Schultner, J., Bergsten, A., Manlosa, A., et al. (2020a). Alternative discourses around the governance of food security: A case study from Ethiopia. *Glob. Food Sec.* 24, 100338. doi: 10.1016/j.gfs.2019.100338
- Jiren, T. S., Dorresteijn, I., Schultner, J., and Fischer, J. (2018). The governance of land use strategies: Institutional and social dimensions of land sparing and land sharing. *Conserv. Lett.* 11, e12429. doi: 10.1111/conl.12429
- Jiren, T. S., Hanspach, J., Schultner, J., Fischer, J., Bergsten, A., Senbeta, F., et al. (2020b). Reconciling food security and biodiversity conservation: participatory scenario planning in southwestern Ethiopia. *E&S* 25. doi: 10.5751/ES-11681-250324
- Jiren, T. S., Leventon, J., Jager, N. W., Dorresteijn, I., Schultner, J., Senbeta, F., et al. (2021). Governance Challenges at the Interface of Food Security and Biodiversity Conservation: A Multi-Level Case Study from Ethiopia. *J. Environ. Manage.* doi: 10.1007/s00267-021-01432-7
- Jiren, T. S., Schultner, J., Abson, D. J., and Fischer, J. (2022). A multi-level assessment of changes in stakeholder constellations, interest and influence on ecosystem services under different landscape scenarios in southwestern Ethiopia. *PLOS sustain. transform.* 1, e0000012. doi: 10.1371/journal.pstr.0000012
- Manlosa, A. O. (2022). Operationalizing agency in livelihoods research: smallholder farming livelihoods in southwest Ethiopia. *E&S* 27. doi: 10.5751/ES-12887-270111
- Manlosa, A. O., Hanspach, J., Schultner, J., Dorresteijn, I., and Fischer, J. (2019a). Livelihood strategies, capital assets, and food security in rural Southwest Ethiopia. *Food Secur* 11, 167–181. doi: 10.1007/s12571-018-00883-x
- Manlosa, A. O., Schultner, J., Dorresteijn, I., and Fischer, J. (2019b). Capital asset substitution as a coping strategy: Practices and implications for food security and resilience in southwestern Ethiopia. *Geoforum* 106, 13–23. doi: 10.1016/j.geoforum.2019.07.022
- Manlosa, A. O., Schultner, J., Dorresteijn, I., and Fischer, J. (2019c). Leverage points for improving gender equality and human well-being in a smallholder farming context. *Sustain Sci* 14, 529–541. doi: 10.1007/s11625-018-0636-4

- Rodrigues, P., Dorresteijn, I., Guilherme, J. L., Hanspach, J., Beenhouwer, M. de, Hylander, K., et al. (2021). Predicting the impacts of human population growth on forest mammals in the highlands of southwestern Ethiopia. *Biol. Conserv.* 256, 109046. doi: 10.1016/j.biocon.2021.109046
- Rodrigues, P., Dorresteijn, I., Senbeta, F., and Fischer, J. (2019). Living on the edge: Rapid assessment of the mammal community in a coffee forest in south-western Ethiopia. *Afr J Ecol* 57, 279–285. doi: 10.1111/aje.12588
- Rodrigues, P., Manlosa, A. O., Fischer, J., Schultner, J., Hanspach, J., Senbeta, F., et al. (2022). The role of perceptions and social norms in shaping women's fertility preferences: a case study from Ethiopia. *Sustain Sci* 17, 2473–2488. doi: 10.1007/s11625-022-01152-9
- Rodrigues, P., Shumi, G., Dorresteijn, I., Schultner, J., Hanspach, J., Hylander, K., et al. (2018). Coffee management and the conservation of forest bird diversity in southwestern Ethiopia. *Biol. Conserv.* 217, 131–139. doi: 10.1016/j.biocon.2017.10.036
- Schultner, J., Dorresteijn, I., Manlosa, A. O., Wehrden, H. v., Hylander, K., Senbeta, F., et al. (2021). Ecosystem services from forest and farmland: Present and past access separates beneficiaries in rural Ethiopia. *Ecosyst. Serv.* 48, 101263. doi: 10.1016/j.ecoser.2021.101263
- Shumi, G., Dorresteijn, I., Schultner, J., Hylander, K., Senbeta, F., Hanspach, J., et al. (2019a). Woody plant use and management in relation to property rights: a social-ecological case study from southwestern Ethiopia. *Ecosyst. People* 15, 303–316. doi: 10.1080/26395916.2019.1674382
- Shumi, G., Rodrigues, P., Schultner, J., Dorresteijn, I., Hanspach, J., Hylander, K., et al. (2019b). Conservation value of moist evergreen Afromontane forest sites with different management and history in southwestern Ethiopia. *Biol. Conserv.* 232, 117–126. doi: 10.1016/j.biocon.2019.02.008
- Shumi, G., Schultner, J., Dorresteijn, I., Rodrigues, P., Hanspach, J., Hylander, K., et al. (2018). Land use legacy effects on woody vegetation in agricultural landscapes of south-western Ethiopia. *Divers Distrib* 24, 1136–1148. doi: 10.1111/ddi.12754
- Wittman, H., Chappell, M. J., Abson, D. J., Kerr, R. B., Blesh, J., Hanspach, J., et al. (2017). A social-ecological perspective on harmonizing food security and biodiversity conservation. *Reg Environ Change* 17, 1291–1301. doi: 10.1007/s10113-016-1045-9

This booklet reports the outcomes of our efforts to identify a widely shared, common vision for the future of the landscapes within Jimma zone in 2040. In 2021 and 2022, we conducted participatory workshops with farmers, public servants and policy makers from kebele, woreda and zonal levels. Together, they developed a common vision for the future of their landscape, which we synthesized via 10 interacting key principles:

1. Strategic land use planning and enforcement
2. Environmental conservation and a biosphere reserve
3. Agricultural development and food security
4. Restoration of degraded land
5. Heritage preservation and development of the bioeconomy
6. Collaborative governance and institutions
7. Improved land tenure security
8. Infrastructure and technology development
9. Raising community awareness and engagement
10. Enabling social and ecological transformation

Stakeholders also identified key transformative strategies to achieve the transition towards the desired future landscape. Although stakeholders largely agreed on the key principles listed above, some disagreements on their implementation remained, mainly with regard to agricultural development and land tenure security.

Formulating a vision for a desirable future landscape is only the beginning. We hope that this booklet can be a starting point for tangible steps towards actually achieving the collectively formulated vision.

Kitaabni kun bu'aa tattaaffii cimaa nuti mul'ata egeree waloo teessuma lafa godina Jimma bara 2040 adda baasuuf taasifne gabaasa. Kana gochuuf, bara 2021 fi 2022tti wal-tajjii marii qonnaan bultoota, hojjettoota mootummaa fi seera baastota hirmaachise gandoota, aanaalee fi sadarkaa godinaatti taasisnee turre. Isaanis waliin ta'uun mul'ata waloo egeree teessuma lafaa isaaniif qopheeffatan; nutis qajeelfamoota bu'uuraa ijoo 10`n armaan gadiitin wal-qunnamsiisne:

1. Tarsiimoo karoorra fi raawwachiisummaa itti fayyadama lafaa
2. Eegumsa naannoo fi kuusaa lubbu qabeeyyii daangeffamanii itti kunuunsifaman
3. Misooma qonnaa fi wabii midhaan nyaataa
4. Lafa manca'e deebisanii dhaabuu
5. Kuusaa hambaalee fi guddina diinagdee uumama irratti hundaa'e
6. Bulchiinsa fi dhaabbilee waloo
7. Wabii qabiyyee lafaa fooyya'e
8. Bu`uraalee misoomaa fi teeknooloojii guddisuu
9. Hubannoo fi hirmaannaa hawaasaa guddisuu
10. Jijjiirama hawaas-naannoo

Qooda fudhattoonnis tooftaalee jijjiiramaa ijoo ta`an adda baasun haala ce'umsa teessuma lafaa keessatti gara egeree barbadamuu galma ittiin ga`an adda baasaniiru. Qooda fudhattoonni baay'inaan qajeelfamoota ijoo armaan olitti irratti waliigalaniru garuu raawwii tokko tokko irratti walii galtee dhabuun tureera; irra caalaa misooma qonnaa fi wabii qabiyyee lafaa ilaalchisee.

Egeree mijataa teessuma lafaatif mul'ata waloo horachuun jalqabbii qofaadha. Kitaabni kun tarkaanfiiwwan qabatamaa mu`l'ata waloo kanniin galmaan ga'uuf ka'uumsa ta'uu akka danda'u abdii qabna.